

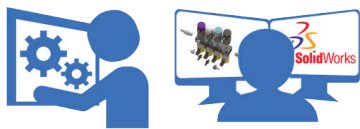


Experts in scientific flow control solutions



Experts in scientific flow control solutions

What sets us apart from the competition ...



Qualified Engineering Support

We have an in-house team of Solidworks certified engineers



In stock products direct from Eox

Off the shelf products available, with the correct seals & material specification, suitable for scientific & medical applications



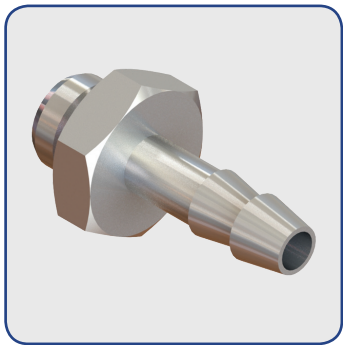
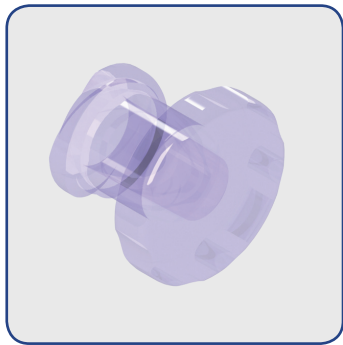
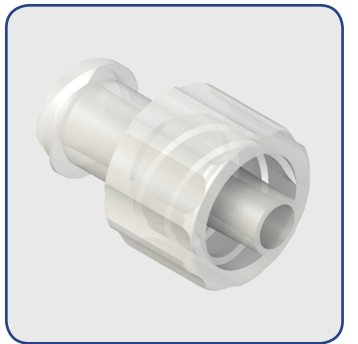
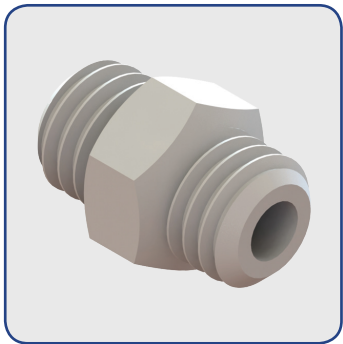
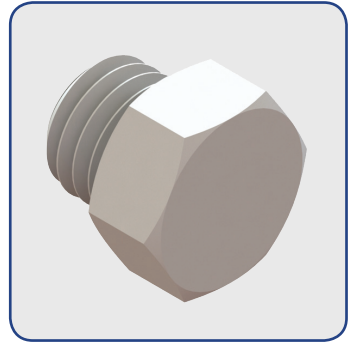
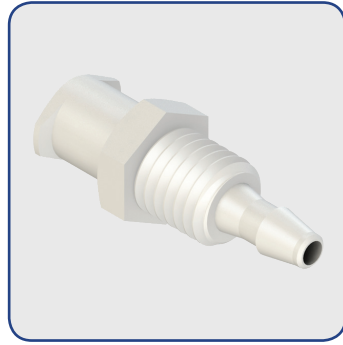
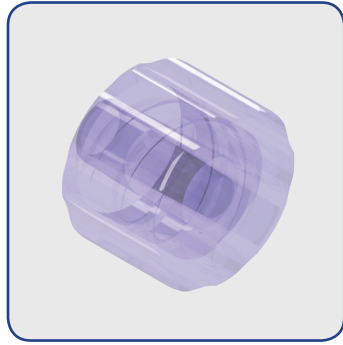
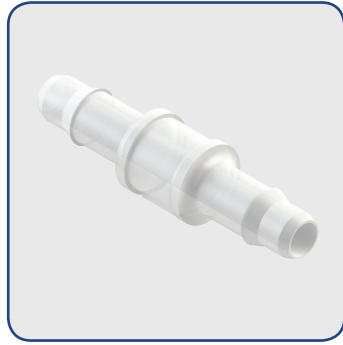
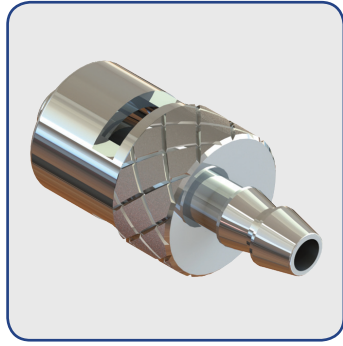
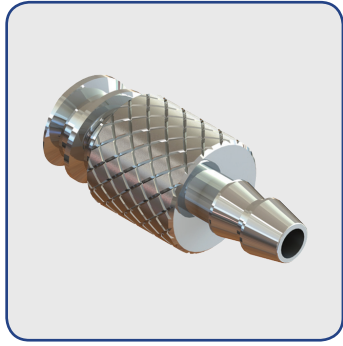
Downloadable product documentation

- Full technical data
- Dimensional drawings
- 2D & 3D CAD Models in IGS format

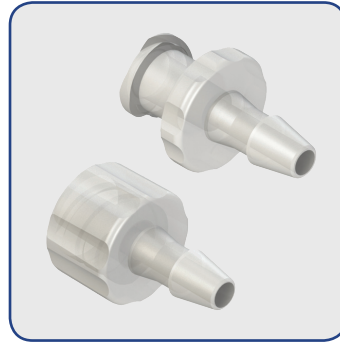
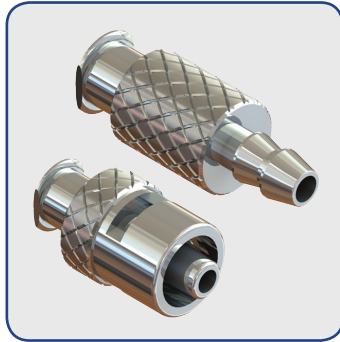
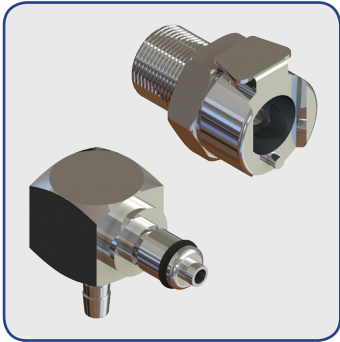
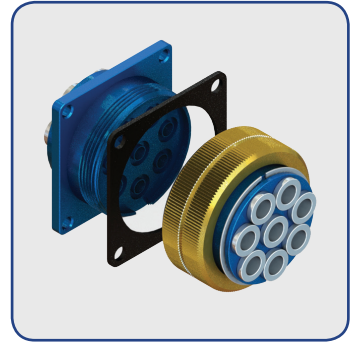
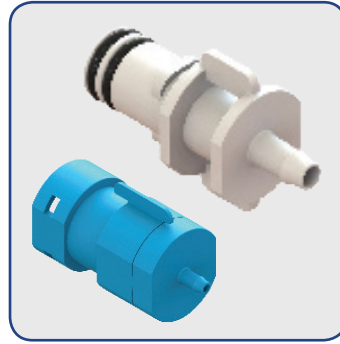
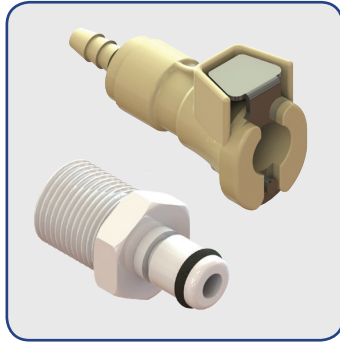
Other services we offer ...

- Kit, packaging and tubing assemblies
- Wide component selection to match chemical compatibility and operating condition requirements
- Class 7 clean room facilities allowing us to provide clean room packaging and custom sub-assembly production for medical OEM's

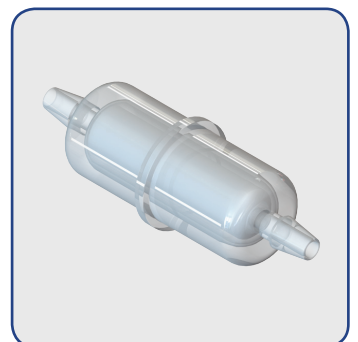
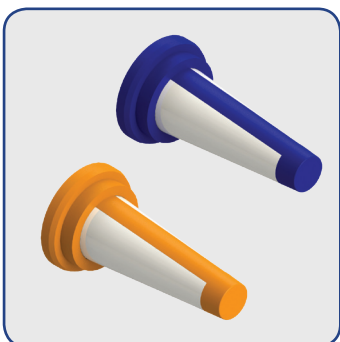
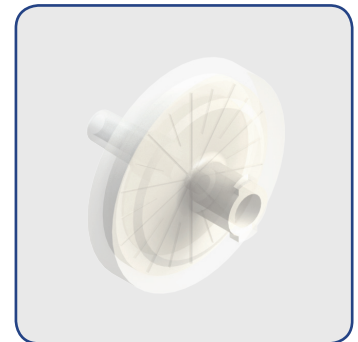
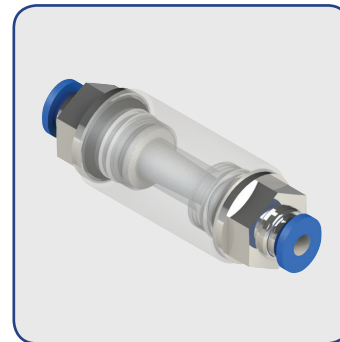
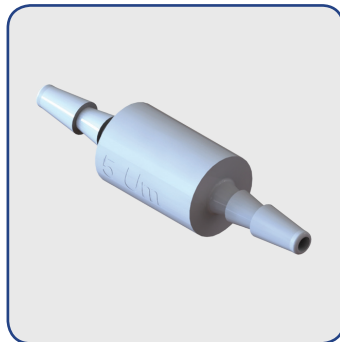
FITTINGS



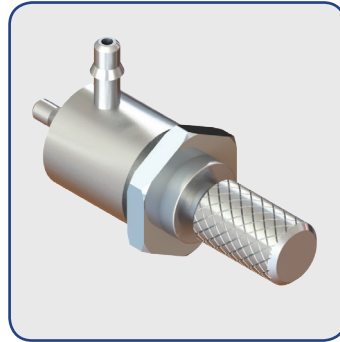
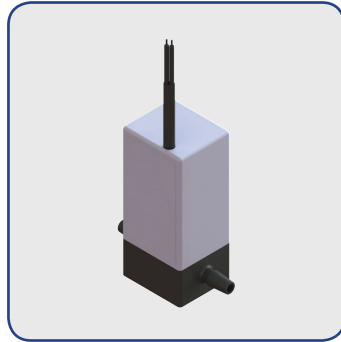
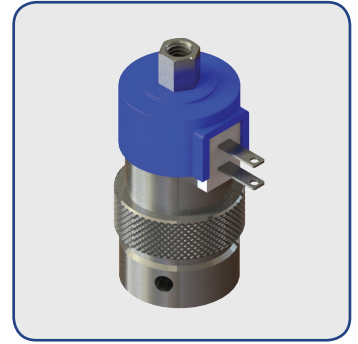
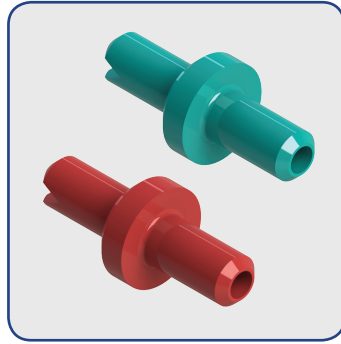
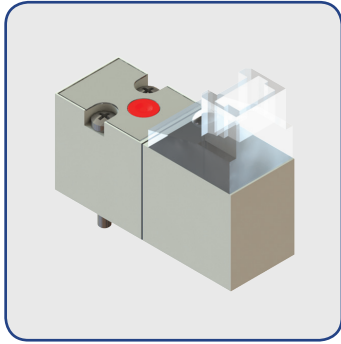
COUPLINGS



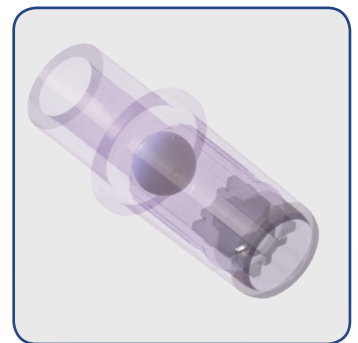
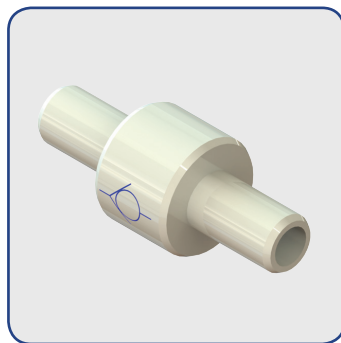
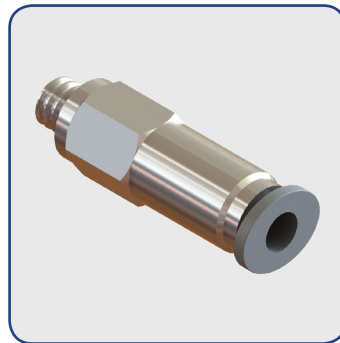
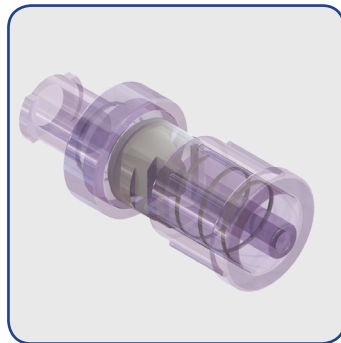
FILTERS



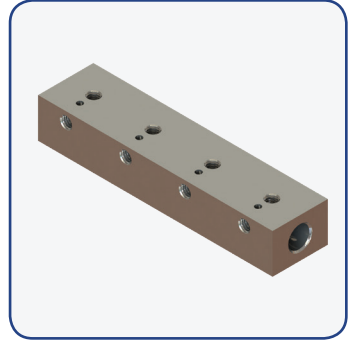
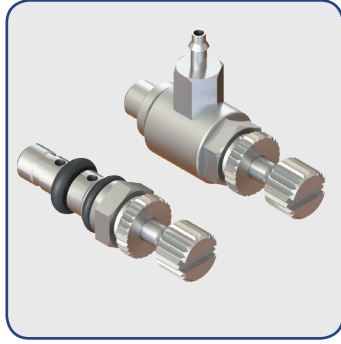
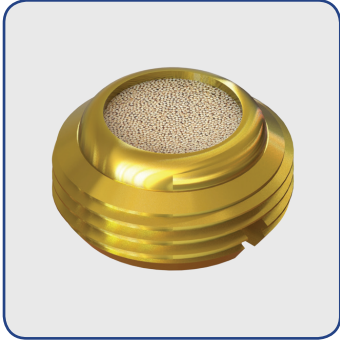
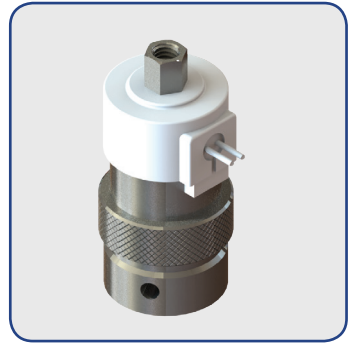
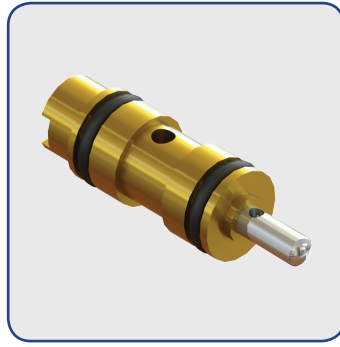
VALVES & FLOW CONTROL



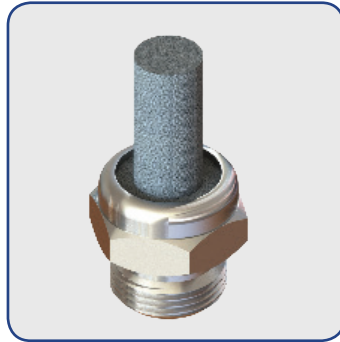
CHECK VALVES



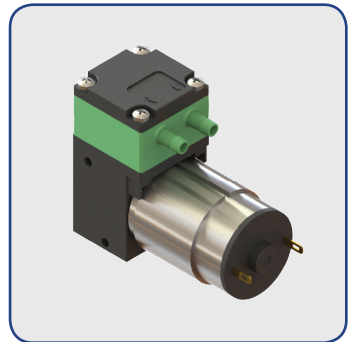
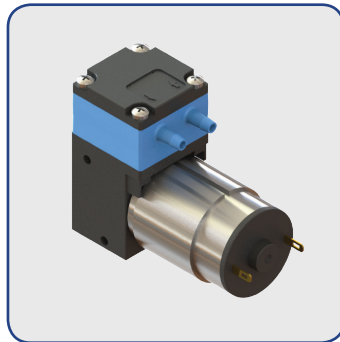
MANIFOLD TECHNOLOGY



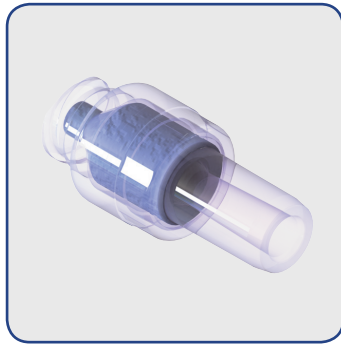
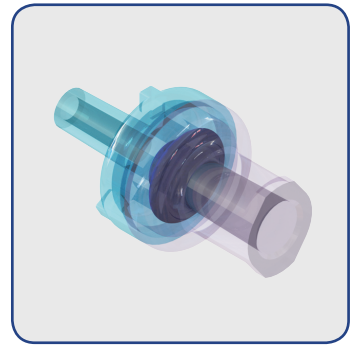
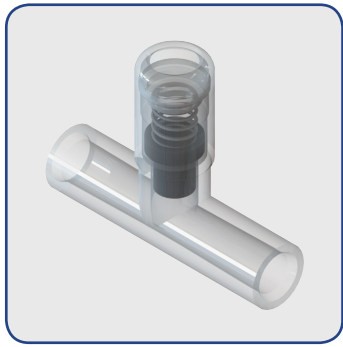
SILENCERS



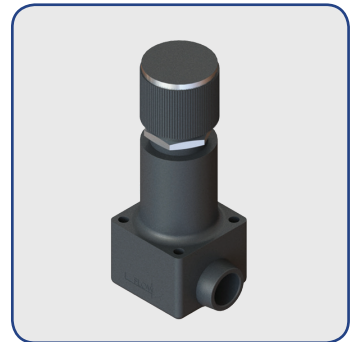
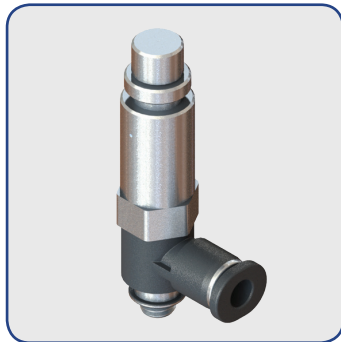
PUMPS



MEDICAL ACCESSORIES



REGULATORS



TUBING



MARKETS WE SERVE



APPLICATIONS



Head Office: 14 Cocos Drive, Bibra Lake, Perth, WA 6163

www.sciflo.com.au

sales@sciflo.com.au

+61 (0)8 9434 3919