

MULTIDETEK

New trace gas analyzer for multiple impurities

With its plug and play philosophy, this compact system provides an attractive and cost effective solution for the industrial market. Based on the Plasma Emission Detector technology, this stand-alone Gas Chromatograph is a flexible and customized platform providing analysis from ppb to %.



> FEATURES:

- Multi trace impurities in one chassis
- Based on the PlasmaDetek technology
- Compact rackmount 4U
- ppb to % application
- User friendly
- Touch screen interface
- Large scale measurement
- High performance Diaphragm valves

> APPLICATIONS:

- Air Separation Unit
- Crude Argon production for nitrogen monitoring
- Speciality gas laboratories
- Process control
- Gas purification
- Steel industries
- Chemical plant
- Welding gas control
- Helium liquification plants
- Quality control for truck filling station
- Semiconductor manufacturing

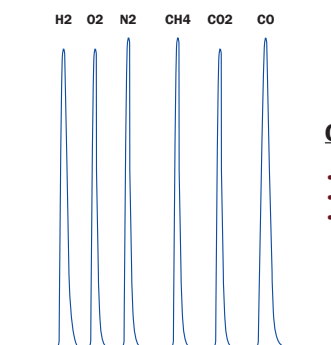


+



=

HIGH PURITY ARGON ANALYSIS



Chromatogram

- Carrier gas : Argon
- Configuration : one injection valve
- Detector : PlasmaDetek

The combination of the PlasmaDetek and the high performance diaphragm valve bring outstanding measurement performance. A longer useful time and better performance on common GC techniques are achieved. They also allow new methods that are not possible with other commercial detectors and valves.

The possibility of the PlasmaDetek to work with argon or helium carrier from ppb to % measurements give a big advantage to this analyzer over the existing systems.

> CAPABILITIES:

(MOST POPULAR APPLICATIONS)

| | H2 | Ar | O2 | N2 | He | CO2 | NH3 |
|------|----|----|----|----|----|-----|-----|
| H2 | - | • | • | • | • | • | • |
| Ar | • | - | • | • | • | • | • |
| O2 | • | • | - | • | • | • | • |
| N2 | • | • | • | - | • | • | • |
| CH4 | • | • | • | • | • | • | • |
| CO | • | • | • | • | • | • | • |
| CO2 | • | • | • | • | • | - | • |
| NMHC | • | • | • | • | • | • | - |
| N2O | • | • | • | • | • | - | • |
| C2H2 | • | • | • | • | • | - | - |
| C2H4 | • | • | • | • | • | - | - |
| C2H6 | • | • | • | • | • | - | - |
| C3H8 | • | • | • | • | • | - | - |
| Ne | • | - | • | • | • | • | • |



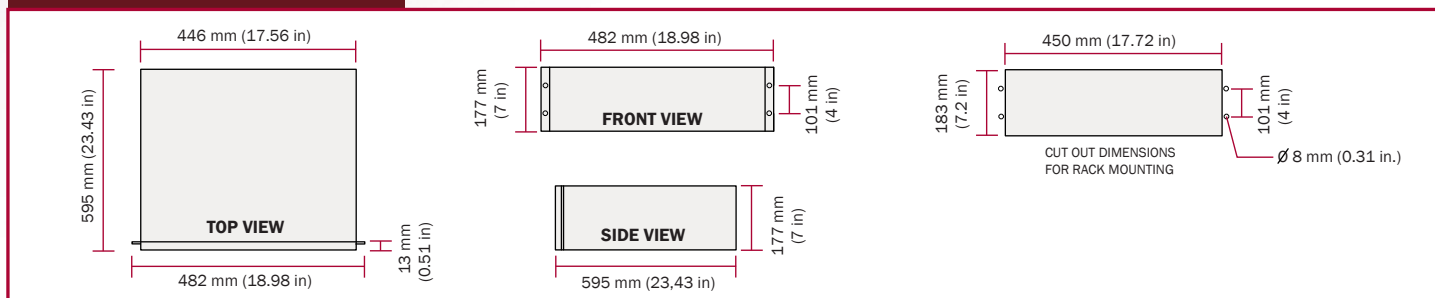
Samples
Impurities

*some application requires more than one chassis/Multidetek
Other measurement possible, please consult factory

> SPECIFICATIONS:

| | |
|--------------------------------------|---|
| DETECTOR TYPE | Plasma Emission Detector design (PlasmaDetek) |
| CARRIER | Argon and Helium |
| RANGE | Application dependant |
| REPEATABILITY | < 1% full scale |
| ACCURACY | Better than $\pm 1\%$ full scale |
| STANDARD FEATURES | <ul style="list-style-type: none"> Manual or autoranging (user selectable) Microprocessor controlled 5.6" TFT intelligent LCD module with Touch Screen Self diagnosis system with auto-resolve alarm 4-20 mA isolated output Alarm Historic Digital system status output for remote monitoring (dry relay contact) |
| OPTIONS | Serial port: RS-232 / 422 / 485 / Profibus for monitoring |
| GAS CONNECTIONS | Sample: 1/8" compression fittings or 1/8 VCR - Vent: 1/8" compression fitting |
| CALIBRATION GAS | Zero: LDP1000 purified gas (Getter) - Span: 70% to 90% of the scale |
| SAMPLE PRESSURE REQUIREMENTS | 10 to 30 PSIG |
| CARRIER PRESSURE REQUIREMENTS | 100 PSIG |
| OPERATING TEMPERATURE | 10 °C to 45 °C |
| SUPPLY | 115 VAC, 50 - 60 Hz or 220 VAC, 50 - 60 Hz |
| POWER CONSUMPTION | 200 Watts (application dependant) |
| DRIFT | < $\pm 1\%$ over 24 hours |

> DIMENSIONS:



271, Saint-Alphonse Sud, Thetford Mines (Quebec) Canada G6G 3V7

Phone: +1-418-755-1319 Fax: +1-418-755-1329 info@ldetek.com www.ldetek.com

©Copyright 2011 LDetek inc.