



Cheminert® Injectors and Valves

- Pressure ratings from 100 psi to 20,000 psi
- Inert, biocompatible construction
- Easy field service
- Automated operation – pneumatic or electric
- 4, 6, 8, and 10 port and internal sample two position models
- Multiposition stream selection versions with up to 26 positions

Design

The basic Cheminert design involves a flat rotor which is engraved with slots which connect the ports. A stator is held at a constant, preset force against the rotor. When repairs are required, all that is necessary for rotor access is the removal of two or three screws. Remove the old rotor and replace it, put the screws back in and tighten them, and the valve is ready for use at the factory-set pressure specification. No adjustments are possible, much less required. Other advantages of the design include easy panel mounting, low actuating torque, and compact size. The flat plate design offers flow paths for basic flow switching, sample injection, and stream selection up to 10 positions (26 positions in some models).

Two position valve descriptions, product numbers, and prices begin on page 146.

Selector (multiposition valve) information may be found on pages 150-151.

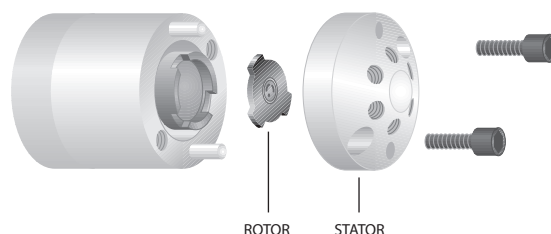
OEM injectors and selectors are on pages 178-185.

Materials of Construction

UHPLC models have stators of specially coated stainless steel, with PAEK rotors. **HPLC** models have stators of Nitronic 60 stainless steel, PAEK, Hastelloy C, or titanium, all of which are compatible with common HPLC solvents. Many are available with a proprietary long-life coating. Valcon H rotors are used with metal stators, and Valcon E with PAEK. **Low pressure** models have PPS stators and rotors of Valcon E2, a proprietary reinforced PTFE composite.

Metal valves are supplied with stainless nuts, with ferrules of the same material as the stator. Fittings for polymeric valves vary with the valve design. The valve price lists contain more detailed information.

Sample injection loops are available in a variety of materials, and are found on the pages with their corresponding valves.



TECH TIP

For optimal zero dead volume connections, make sure your tubing meets the best industry standards. OD tolerance should be nominal dimension $\pm .002$ ".

Fractional dimension	Nominal dimension
1/32"	.031
1/16"	.062
1/8"	.125
1/4"	.250
3/8"	.375
1/2"	.500

CHROMalytic TECHNOlogy Pty Ltd AUSTRALIAN Distributors e-mail: sales@chromtech.net.au Tel: 03 9762 2034

Injectors and Switching Valves

The applications section beginning on pages 168-169 gives an overview of the many functions which can be performed by two position valves. Since the most common method of sample injection utilizes a 6 port valve with an external sample loop, 6 port valves are often referred to as "injectors". However, as the Applications section illustrates, 6 port valves can do more than inject sample, and 8 and 10 port valves can be sample injectors at the same time they're also used for backflushing or column switching.

One more variation is the 4 port internal sample injector, which is used when the sample size must be smaller than the smallest available loop. The internal sample "loop" is actually an engraved connecting slot on the rotor, sized to contain a specified amount of sample.

All these valves (except manual Models C1 and C1CF) are compatible with all VICI actuation options, with position feedback available for manual valves.

Stream Selectors (Multiposition Valves)

Selectors move in continuous revolutions by incremental steps, unlike the back and forth switching of two position valves. Each step selects one of 4 to 26 streams, directing it through the valve outlet to a sample valve, pressure sensor, detector, column, etc. The same valve can also direct one stream to a number of outlets for fraction collection.

In the standard models, the non-selected streams are dead-ended. However, some valves can be ordered with an optional rotor that returns each stream to its source. Consult the factory for more information.

MORE INFORMATION

Decoding
Cheminert valve
product no's... 264-265

Actuation 186-209

Applications . 168-169

Materials

Metals..... 254-255
Polymers256
Valve rotors.....257

Valve descriptions

Cheminert
injectors..... 146-149
selectors..... 150-151
nanovolume®.....146
Diaphragm 140-141
Valco
injectors..... 99
selectors..... 100-101

Cheminert valve prices

HPLC 152-163
Low pressure .. 164-167
Nanovolume®
..... 152-155, 170-171
Selectors 170-177
OEM..... 178-185


Nanovolume® HPLC Injectors and Switching Valves

Cheminert nanovolume injectors and switching valves are ideal for high speed, high throughput techniques which demand a valve and fitting system that minimize internal volume and eliminate dead volume. A proprietary rotor material and stator coating achieve pressures to 20,000 psi, suitable for the most demanding analytical techniques. All models are compatible with any VICI actuation option.



NEW Injectors with 360 micron fittings, 100 or 150 micron bore


Models C72MU and C72MX p. 152

- 360 µm Cheminert fittings 
- Choice of 100 or 150 µm flowpath
- 10,000, 15,000, and 20,000 psi versions
- 4, 6, 8, or 10 ports (4 or 6 in 20,000 psi versions)
- Coated stator

These injectors incorporate our unique fittings which permit direct connection of 360 micron OD fused silica, PEEK, stainless, or electroformed nickel tubing.


Injectors with 1/32" Cheminert fittings, 100 micron bore

Models CN2 and CN4 pp. 154-155

- 1/32" Cheminert fittings 
- 100 or 150 µm flowpath
- 5,000 psi rating
- 6 or 10 ports
- Internal sample version with sample size of 4, 10, or 20 nanoliters
- Uncoated PAEK stator

Injectors with 1/32" Valco fittings, 100 or 150 micron bore


Models C72NX and C74NX p. 153

- 1/32" Valco fittings 
- Choice of 100 or 150 µm flowpath
- 10,000, 15,000, and 20,000 psi versions
- 4, 6, 8, or 10 ports (4 or 6 in 20,000 psi versions)
- Internal sample version with sample size of 4, 10, or 20 nanoliters
- Coated stator

Selectors with 1/32" or 1/16" Valco fittings, 100 - 250 micron bore

Model C75NX p. 170

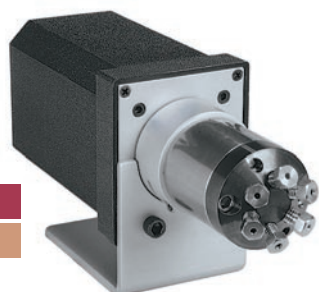
Model C75H p. 171

- 1/32" or 1/16" Valco fittings 
- 150 or 250 µm flowpath
- 10,000, 15,000, and 20,000 psi versions
- 4, 6, 8, or 10 ports (4 or 6 in 20,000 psi versions)
- Coated stator

Model C72
page 156

15,000 psi

10,000 psi



NEW UHPLC Injectors and Switching Valves

New this year from VICI are UHPLC **Models C72X** and **C72H** valves, with pressure ratings of 15,000 psi and 10,000 psi, respectively. They can be used as injectors or switching valves.

Microbore **Models C74X** and **C74H** are equivalent internal volume sample injectors, with sample sizes ranging from 4 nanoliters to 50 nanoliters.

HPLC Injectors and Switching Valves

Microbore

Model C2 valves can be used as injectors or switching valves.

Model C4 is an internal volume sample injector with sample sizes ranging from 10 nl to 50 nl.

Model C6 continuous flow injector is designed to maintain pump flow during most of the switching cycle, virtually eliminating pressure spikes.

Model C1 is a through-the-handle (front-loading) injector designed for direct replacement of existing competitive models. All Model C1 injectors are manual, with position feedback standard.

Model C1CF is a 6 port through-the-handle continuous flow injector. An engraving on the stator maintains pump flow between ports 5 and 4 during most of the switching cycle, virtually eliminating pressure spikes. Because the handle is integral to the design, all Model C1CF valves are manual, with position feedback standard.

Analytical

Models C2, C6, and **C1** are also available for analytical injection and switching, with port sizes of 0.40 mm (.016"). **Model C4** offers internal volume sample sizes ranging from 0.1 to 0.5 µl.

Semi-Preparative HPLC

Model C2 valves are available with flow passages optimized for semi-preparative HPLC. Choose from 4, 6, 8, or 10 port versions. Contact our sales or technical support departments for more information.

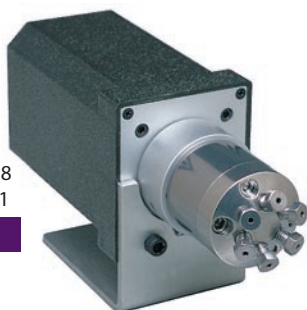
Autosampler Replacements

We supply direct replacements for injectors in many popular autosamplers. Call technical support to determine which replacement is best for your application.

Model C2

Microbore, page 158
Analytical, page 161

5,000 psi



Model C4

Microbore, page 159
Analytical, page 162

5,000 psi

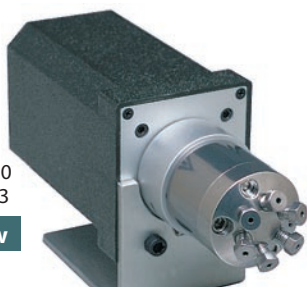
Internal sample



Model C6

Microbore, page 160
Analytical, page 163

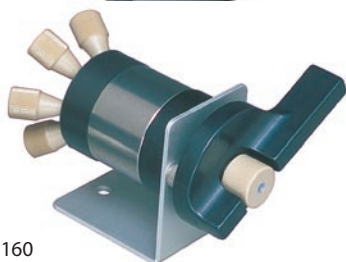
Continuous flow



Model C1

Microbore, page 160
Analytical, page 163

Through-handle



Low Pressure Injectors and Switching Valves

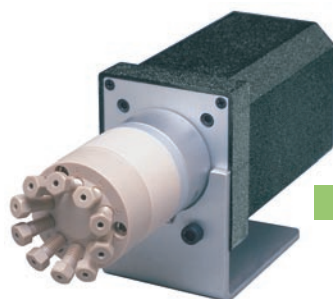
With Valco Zero Dead Volume (ZDV) Fittings

C20Z valves with zero dead volume fittings (10-32 thread) are shipped with standard PEEK nuts and ferrules. Zero dead volume fingertight fittings and nuts and ferrules of other materials may be ordered separately. Standard specifications are 100 psi gas/250 psi liquid at 75°C. On request, the pressure rating can be as high as 600 psi liquid.

Caution: Metal fittings will damage the threads and details of C20Z series valves. Use of metal fittings in a C20Z valve voids the warranty.

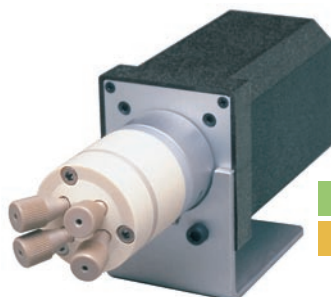
The **Model C22Z** is a conventional two position sample injector and switching valve, with 4, 6, 8, or 10 ports. Sample injection requires a loop, ordered separately.

The **Model C24Z** is an internal sample injector, for applications in which the sample size is smaller than that of any available external loop. Sample sizes available are 0.2, 0.5, and 1 µl.



Model C22Z
page 164

10-32 ZDV



Model C24Z
page 166

10-32 ZDV

Internal sample

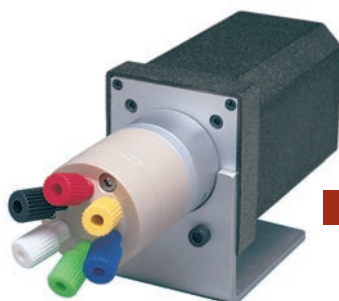
With Cheminert 1/4-28 Fittings

C20 Series valve caps have female threads for direct connection of lines – no couplings are required. C20 Series valves are available in 4, 6, 8, and 10 port versions. Standard specifications are 100 psi gas/250 psi liquid at 75°C.

Multicolored Cheminert 1/4-28 flangeless fittings for 1/16" or 1/8" OD tubing (depending on the valve model) are included.

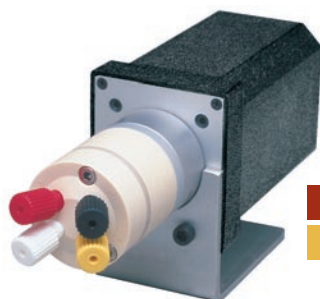
Model C22 valves are used for sample injection or switching. (Functionally equivalent to Model C22Z) Sample injection requires a loop, ordered separately.

The **Model C24** is an internal sample injector like the C24Z, available with 0.5, 1.0, or 2.0 µl sample size.



Model C22
page 165

1/4-28 Int.



Model C24
page 167

1/4-28 Int.

Internal sample

MORE INFORMATION

Decoding
Cheminert valve
product no's... 264-265

Actuation 186-209

Applications . 168-169

Materials

Metals..... 254-255
Polymers256
Valve rotors.....257

Valve descriptions

Cheminert
injectors..... 146-149
selectors..... 150-151
nanovolume®.....146
Diaphragm 140-141
Valco
injectors.....99
selectors..... 100-101

Cheminert valve prices

HPLC..... 152-163
Low pressure .. 164-167
Nanovolume®
..... 152-155, 170-171
Selectors 170-177
OEM..... 178-185

CAUTION

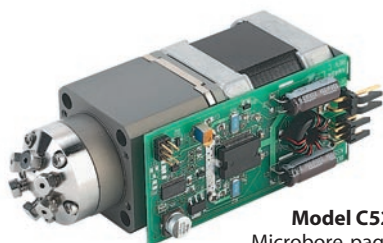
Metal fittings will damage the threads and details of C20Z series valves (models C22Z, C24Z, C25Z). Use of metal fittings in a C20Z valve voids the warranty.

TECH TIP

Our life tests indicate that these valves will typically give more than 100,000 cycles before requiring any service. This assumes that the fluid used is free of particulates and not reactive toward the valve components. If the stream may contain particulates, or if it has high salt content which could precipitate within the sample lines, use an in-line filter.

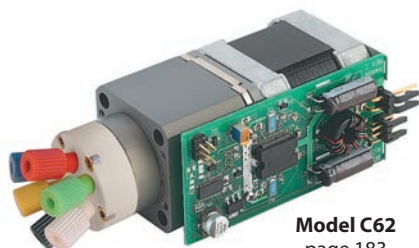
Note: Valves with purge ports are available on request.

Injectors for OEM Applications



Model C52
Microbore, page 178
Analytical, page 180

5,000 psi



Model C62
page 183

Low pressure

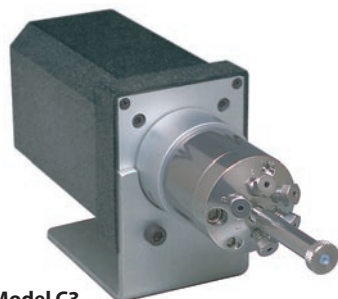
NEW Integrated Motor/Injector Assemblies for OEMs

Cheminert's new **Model C52** (HPLC) and **Model C62** (low pressure) injectors are integrated motor/valve assemblies designed specifically to be built into an OEM system. Using the well-proven Cheminert injector designs and the 24 volt motor from our popular microelectric actuators, the C52 and C62 need only to be connected to the instrument's power supply.

Control is simplified to require a single contact closure; the injector's position is determined by whether the closure is held high or low. There's even an easy way for the instrument to confirm the valve's position by sensing the output from a built-in sensor.

In the default control mode, a contact closure moves the injector from load to inject, where it remains until the contact is broken and the injector reverts to the load position. A simple jumper change shifts the mode to dual contact closure, in which one contact closure shifts the injector to inject and a second is required to shift it back to load. Jumper settings can also be modified to change the motor's degree of rotation so it can be used with any of the valve models available.

All these features are built into a compact and lightweight package and are available in 4, 6, 8, and 10 port configurations.

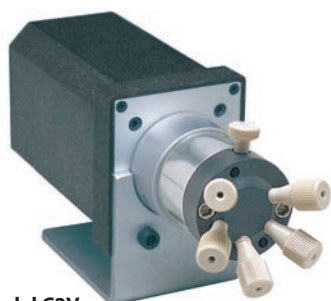
Autosampler and Other OEM Injectors

Model C3
Microbore, page 179
Analytical, page 181

Centered port

Model C3 is a unique injector with a syringe injection port centered on the rear face of the valve (opposite the handle or actuator), allowing convenient syringe insertion when the valve is mounted on an actuator inside an instrument.

Model C2V is designed specifically for use in an autosampler. It is like the standard C2 except that the sample port is perpendicular to the valve axis. This permits the valve and actuator to be installed horizontally, while the syringe loads the injector vertically.

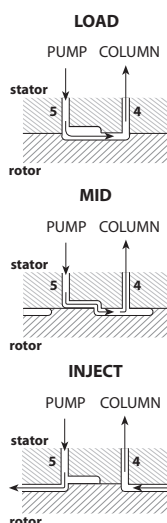


Model C2V
Microbore, page 179
Analytical, page 181

Vertical port

UNIVERSAL ACTUATOR

The new universal actuator for OEMs operates virtually any Valco or Cheminert rotary valve – two position and selector alike – greatly simplifying the electronic aspect of instrument design.
See page 192.

MODEL C1CF FLOWPATH**OEM SELECTOR VALVES**

See pages 151, 184-185 for selector (multiposition) valves for OEMs.

Stream Selectors

UHPLC and High Pressure Selectors

NEW Model C75 selectors offer pressure ratings of 15,000 psi and 10,000 psi with 1/32" and 1/16" fittings.

The **Model C5**, with Valco ZDV fitting details, is available with 4, 6, 8, or 10 positions. Stators are available in Nitronic 60 stainless, titanium, and Hastelloy C-22, with rotors of Valcon H, all of which are compatible with common HPLC solvents. PAEK stators are used in combination with Valcon E rotors.

The C5 valve is the backbone of the Cheminert **HPLC column selector system**, which includes two stream selection valves mounted on a single microelectric actuator. Columns are not included.

Model C75
pages 170 and 171

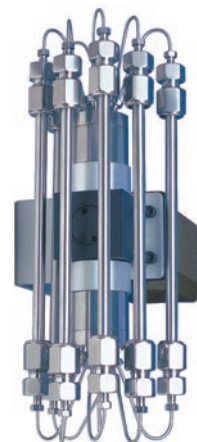
15,000 psi

10,000 psi



Model C5
page 172

5,000 psi



**HPLC
column selector
system**
page 173

5,000 psi

**Column selector
system**

Low Pressure Selectors

With Valco Zero Dead Volume Fittings

Model C25Z valves have Valco ZDV fitting details, and are available in 4, 6, 8, 10, 12, and 14 position models.

Model C35Z valves have 1/16" Valco ZDV details, and are available in 20, 24, and 26 position models. This is a tapered rotor valve limited to 100 psi liquid. Rotors are made from Valcon E2, with valve body made from PPS.

With Cheminert 1/4-28 Fittings

The **Model C25** has female 1/4-28 threaded fitting details for direct connection of lines – no couplings are required. The C25 is available in 4, 6, 8, and 10 position models. Multicolored Cheminert 1/16" or 1/8" flangeless fittings are included. Order other fittings separately as required. Rotors are made of Valcon E2, a proprietary reinforced PTFE composite, with stators of PPS.

With Cheminert 1/2-20 Fittings

Model C45 valves feature 1/2-20 threaded fitting details for use with 1/4" OD tubing. This is a tapered rotor valve with large bore for high flow applications. Rotors are made from Valcon E2, with valve body made from PPS. Available in 4 and 6 port configurations.



Model C25Z
page 174

Low pressure

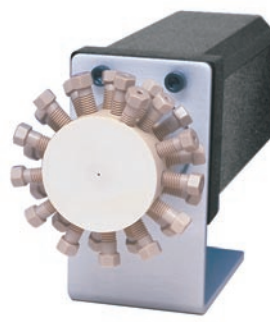
10-32 ZDV



Model C25
page 175

Low pressure

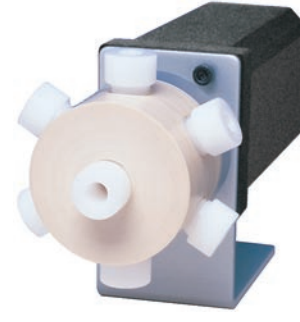
1/4-28 Internal



Model C35Z
page 176

Low pressure

10-32 ZDV



Model C45
page 177

Low pressure

1/2-20 Int.

Stream Selectors for OEM Applications

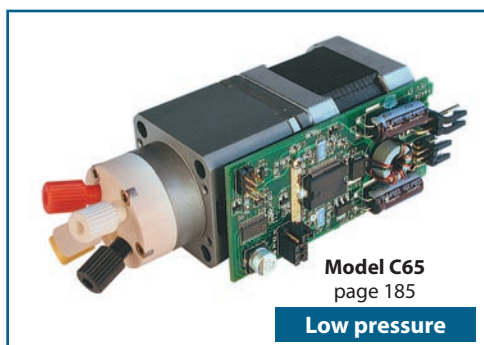
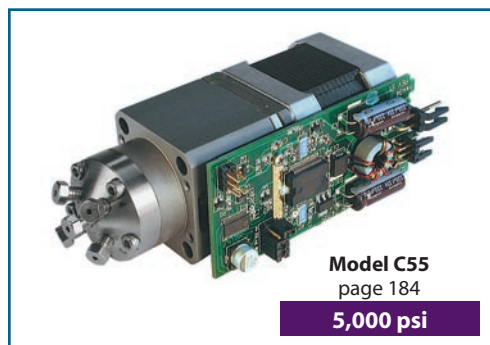
NEW Integrated Motor/Stream Selectors for OEMs

Cheminert's new **Model C55** (HPLC) and **Model C65** (low pressure) stream selectors are integrated motor/valve assemblies designed specifically to be built into an OEM system. The compact, lightweight package is available in 4, 6, 8, and 10 position configurations.

Using the well-proven Cheminert stream selector design and the 24 volt motor from our popular microelectric actuators, the Models C55, C65, and C65Z need only to be connected to an instrument's power supply. A single momentary contact closure steps the valve to the next position; a separate

contact closure moves the valve to position 1 (Home).

See how our stream selectors can simplify your instrument design and minimize time to market – all while trimming your costs.

**UNIVERSAL ACTUATOR**

The new universal actuator for OEMs operates virtually any Valco or Cheminert rotary valve – two position and selector alike – greatly simplifying the electronic aspect of instrument design.

See page 192.

MORE INFORMATION

Actuation 186-209

Applications . 168-169

Materials

Metals..... 254-255
Polymers256
Valve rotors.....257

Valve descriptions

Cheminert
injectors..... 146-149
selectors..... 150-151
nanovolume®.....146
Diaphragm 140-141
Valco
injectors.....99
selectors..... 100-101

Cheminert valve prices

HPLC 152-163
Low pressure .. 164-167
Nanovolume®
..... 152-155, 170-171
Selectors 170-177
OEM..... 178-185

TECH TIP**Caution:**

Metal fittings will damage the threads and details of C25Z, C35Z, and C65Z series valves.

Use of metal fittings in these valves voids the warranty.

SPECIFICATIONS**CHEMINERT MULTIPosition VALVES**

Model	Stator material	Std rotor material	Max pressure	Max temp	Number of positions
High Pressure					
C5	Metal	Valcon H	5000 psi liq	75°C	4, 6, 8, 10
	PAEK	Valcon E	5000 psi liq	50°C	4, 6, 8, 10
Low Pressure					
C25Z	PPS	Valcon E2	100 psi gas/ 250 psi liq	75°C	4, 6, 8, 10, 12, 14
C25	PPS	Valcon E2	100 psi gas/ 250 psi liq	75°C	4, 6, 8, 10
C35Z	PPS	Valcon E2	100 psi liq	50°C	20, 24, 26
C45	PPS	Valcon TF	100 psi liq	50°C	4, 6, 8
OEM – High Pressure					
C55	Metal	Valcon H	5000 psi liq	50°C	4, 6, 8, 10
	PAEK	Valcon E	5000 psi liq	50°C	4, 6, 8, 10
OEM – Low Pressure					
C65Z	PPS	Valcon E2	100 psi gas/ 250 psi liq	50°C	4, 6, 8, 10
C65	PPS	Valcon E2	100 psi gas/ 250 psi liq	50°C	4, 6, 8, 10


PORT DIAMETERS

Model	Fitting size	Standard port diameter
High Pressure		
C5	1/16" ZDV	0.15 mm (.006") 0.25 mm (.010") 0.40 mm (.016") 0.75 mm (.030")
Low Pressure		
C25Z	1/16" ZDV	0.75 mm (.030")
C25	1/4-28 for 1/16" tubing	0.75 mm (.030")
	1/4-28 for 1/8" tubing	1.50 mm (.060")
C35Z	1/16" ZDV	0.75 mm (.030")
C45	1/2-20 for 1/4" tubing	4.6 mm (.180")
OEM – High Pressure		
C55	1/16" ZDV	0.25 mm (.010") 0.40 mm (.016") 0.75 mm (.030")
OEM – Low Pressure		
C65Z	1/16" ZDV	0.75 mm (.030")
C65	1/4-28 for 1/16" tubing	0.75 mm (.030")
	1/4-28 for 1/8" tubing	1.50 mm (.060")

NEW UHPLC Nanovolume Injectors with 360 µm fittings

NEW 20,000 psi UHPLC Nanovolume valves 360 micron fittings, 100 micron bore (.004")

Model C72MU

20,000 psi	Includes stainless 360 micron fittings.	Microelectric actuator: 24 VDC, with 110/230 VAC to 24 VDC power supply.
360µm 100 µm		

SPECS

20,000 psi liq
50°C max
Stainless w/ inert coating
stator
Valcon E3 rotor

OPTIONS

- 150 micron (.006") bore
- Internal sample injector (4 - 20 nl)
- 10,000 and 15,000 psi versions available

Coated stainless stator

Manual	C72MU-4694	C72MU-4696
With pneumatic actuator	C72MU-4694A	C72MU-4696A
With standard electric actuator	C72MU-4694E	C72MU-4696E
With microelectric actuator	C72MU-4694EH	C72MU-4696EH
Replacement valve	C72MU-4694D	C72MU-4696D
Replacement rotor	C72M-46R4	C72M-46R6
Replacement stator	C72M-4C94	C72M-4C96



4 Port

Prod No

Price



6 Port

Prod No


Price



Model C72MU
360 micron fittings
(Model C72MX is similar)

NEW 15,000 psi UHPLC Nanovolume valves 360 micron fittings, 150 micron bore (.006")

Model C72MX

15,000 psi	Includes stainless 360 micron fittings.	Microelectric actuator: 24 VDC, with 110/230 VAC to 24 VDC power supply.
360µm 150 µm		

SPECS

15,000 psi liq
50°C max
Stainless w/ inert coating
stator
Valcon E3 rotor

OPTIONS

- 100 micron (.004") bore
- Internal sample injector (4 - 20 nl)
- 10,000 psi version available
- 4 and 8 port versions available

Coated stainless stator

Manual	C72MX-6696	C72MX-6690
With pneumatic actuator	C72MX-6696A	C72MX-6690A
With standard electric actuator	C72MX-6696E	C72MX-6690E
With microelectric actuator	C72MX-6696EH	C72MX-6690EH
Replacement valve	C72MX-6696D	C72MX-6690D
Replacement rotor	C72M-66R6	C72M-66R0
Replacement stator	C72M-6C96	C72M-6C90



6 Port

Prod No

Price



10 Port

Prod No

Price

MORE INFORMATION

360 micron nanovolume
fittings page 58

UHPLC Nanovolume Injectors with 1/32" Valco stainless fittings **NEW****NEW 15,000 psi UHPLC Nanovolume valves****1/32" Valco stainless fittings, 150 micron bore (.006")***Model C72NX***SPECS****15,000 psi liq
50°C max**Stainless w/ inert coating
stator
Valcon E3 rotorIncludes 1/32" Valco
stainless steel fittings.Microelectric actuator:
24 VDC, with 110/230 VAC to 24 VDC
power supply.* The 6 port valve
includes a 5 µl loop of
the stator material.**15,000 psi****1/32"****150 µm****6 Port ***

Prod No

Price

**10 Port**

Prod No

Price

OPTIONS

- 100 micron (.004") bore
- 250 micron (.010") bore
- 10,000 psi version available
- 4 and 8 port versions available

Coated stainless statorManual
With pneumatic actuatorWith standard electric actuator
With microelectric actuatorReplacement valve
Replacement rotor
Replacement statorC72NX-6696
C72NX-6696AC72NX-6696E
C72NX-6696EHC72NX-6696D
C72N-66R6
C72N-6C96C72NX-6690
C72NX-6690AC72NX-6690E
C72NX-6690EDC72NX-6690D
C72N-66R0
C72N-6C90**Model C72NX**
1/32" Valco stainless fittings**Sample loops for C72NX valves**Each stainless loop includes two stainless 1/32"
Cheminert nanovolume fittings.

Volume	Stainless	
	Prod No	Price
1 µl	CSLN1K	\$35.00
2 µl	CSLN2K	45.00
5 µl	CSLN5K	52.50

**Model C74NX**
1/32" Valco stainless fittings**NEW 15,000 psi UHPLC Nanovolume internal sample injectors****1/32" Valco stainless fittings, 150 micron bore (.006")***Model C74NX***SPECS****15,000 psi liq
50°C max**Stainless w/ inert coating
stator
Valcon E3 rotorIncludes 1/32" Valco
stainless steel fittings.Microelectric actuator:
24 VDC, with 110/230 VAC to 24 VDC power supply.**15,000 psi****Internal sample****1/32"****150 µm****4 nanoliters**

Prod No

Price

10 nanoliters

Prod No

Price

20 nanoliters

Prod No

Price

Coated stainless statorManual
With pneumatic actuatorWith standard electric actuator
With microelectric actuatorReplacement valve
Replacement rotor
Replacement statorC74NX-6694-.004
C74NX-6694-.004AC74NX-6694-.004E
C74NX-6694-.004EHC74NX-6694-.004D
C74N-66R-.004
C74N-6C9C74NX-6694-.01
C74NX-6694-.01AC74NX-6694-.01E
C74NX-6694-.01EHC74NX-6694-.01D
C74N-66R-.01
C74N-6C9C74NX-6694-.02
C74NX-6694-.02AC74NX-6694-.02E
C74NX-6694-.02EHC74NX-6694-.02D
C74N-66R-.02
C74N-6C9**OPTIONS**





- 250 micron (.010") bore
- 10,000 and 20,000 psi versions available

MORE INFORMATION1/32" Valco
fittings pages 10, 12
1/16" nanovolume
injectors
C72X156
C74X157

Nanovolume Injectors with 1/32" Cheminert Fittings

**5,000 psi Nanovolume valves,
1/32" Cheminert fittings, 100 micron ports (.004")**

Model CN2

<div>5,000 psi</div> <div>1/32"100 μm</div>					
Includes 1/32" PEEK Cheminert nanovolume fittings.		Microelectric actuator: 24 VDC, with 110/230 VAC to 24 VDC power supply.		* The 6 port valve includes a 250 nI PEEK loop.	
<div><div></div><div>For 6 port</div></div> <div><div></div><div>For 10 port</div></div>		<div><div></div><div>6 Port*</div><div>Prod NoPrice</div></div> <div><div></div><div>10 Port</div><div>Prod NoPrice</div></div>		<div>SPECS</div> <div>5000 psi liq</div> <div>50°C max</div> <div>PAEK stator</div> <div>Valcon E rotor</div>	
				<div>OPTIONS</div> <div>■ 150 micron (.006") bore</div>	
<div>PAEK stator</div> <div>Manual</div>		CN2-4346		CN2-4340	
<div>With microelectric actuator</div>		CN2-4346EH		CN2-4340EH	
<div>Replacement valve</div>		CN2-4346D		CN2-4340D	
<div>Replacement rotor</div>		CN2-43R6		CN2-43R0	
<div>Replacement stator</div>		CN2-4C46I		CN2-4C40I	



Sample loops *for CN2 valves*

Each PEEK loop includes two PEEK Cheminert nanovolume fittings.

	PEEK	
Volume	Prod No	Price
250 nl	CNSL250PK	
500 nl	CNSL500PK	
1 µl	CNSL1KPK	
2 µl	CNSL2KPK	
5 µl	CNSL5KPK	



MORE INFORMATION
 1/32" PEEK Cheminert fitting (nut with collapsible ferrule) p.59

Nanovolume Injectors with 1/32" Cheminert Fittings

5,000 psi Nanovolume internal sample injector, 1/32" Cheminert fittings, 100 micron ports (.004")

Model CN4

SPECS
5000 psi liq
50°C max
PAEK stator
Valcon E rotor

Includes 1/32"
PEEK Cheminert
nanovolume fittings.



Microelectric actuator:
24 VDC, with 110/230 VAC to 24 VDC power supply.



5,000 psi

Internal sample

1/32"

100 µm

OPTIONS

- 150 micron (.006") bore

Sample volume

4 nanoliters

10 nanoliters

20 nanoliters

PAEK stator

Manual

With microelectric actuator

Replacement valve

Replacement rotor

Replacement stator

Prod No

Price

Prod No

Price

Prod No

Price

CN4-4344-.004

CN4-4344-.01

CN4-4344-.02

CN4-4344-.004EH

CN4-4344-.01EH

CN4-4344-.02EH

CN4-4344-.004D

CN4-4344-.01D

CN4-4344-.02D

CN4-43R-.004

CN4-43R-.01

CN4-43R-.02

CN4-4C4I

CN4-4C4I

CN4-4C4I



Model CN4
1/32" Cheminert
fittings

MORE INFORMATION





1/32" PEEK Cheminert
fitting (nut with
collapsible ferrule) p.59

CHROMalytic TECHNOlogy Pty Ltd AUSTRALIAN Distributors e-mail: sales@chromtech.net.au Tel: 03 9762 2034

Microbore UHPLC



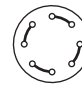
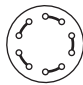
NEW 15,000 psi UHPLC microbore valves, 1/16" Valco fittings, 0.25 mm ports (.010")

Model C72X

15,000 psi Microbore 1/16" 0.25 mm	Includes stainless steel nuts and ferrules.		Standard electric actuator: 110 VAC for USA 110/230 VAC to 24 VDC power supply for international.		* The 6 port valve includes a 5 µl stainless steel sample loop.		SPECS 15,000 psi liq 50°C max Stainless stator with inert coating Valcon E3 rotor	
			Microelectric actuator: 24 VDC, with 110/230 VAC to 24 VDC power supply.				OPTIONS 0.15 mm ports (.006")	
	 4 Port		 6 Port*		 8 Port		 10 Port	
	Prod No	Price	Prod No	Price	Prod No	Price	Prod No	Price
Manual	C72X-1694		C72X-1696		C72X-1698		C72X-1690	
With pneumatic actuator	C72X-1694A		C72X-1696A		C72X-1698A		C72X-1690A	
With standard electric actuator	C72X-1694E		C72X-1696E		C72X-1698E		C72X-1690E	
With microelectric actuator	C72X-1694EH		C72X-1696EH		C72X-1698ED		C72X-1690ED	
Replacement valve	C72X-1694D		C72X-1696D		C72X-1698D		C72X-1690D	
Replacement rotor	C72-16R4		C72-16R6		C72-16R8		C72-16R0	
Replacement stator	C72-1C94		C72-1C96		C72-1C98		C72-1C90	

NEW 10,000 psi UHPLC microbore valves, 1/16" Valco fittings, 0.25 mm ports (.010")

Model C72H

10,000 psi Microbore 1/16" 0.25 mm	Includes stainless steel nuts and ferrules.		Standard electric actuator: 110 VAC for USA 110/230 VAC to 24 VDC power supply for international.		* The 6 port valve includes a 5 µl stainless steel sample loop.		SPECS 10,000 psi liq 50°C max Stainless stator with inert coating Valcon E3 rotor	
			Microelectric actuator: 24 VDC, with 110/230 VAC to 24 VDC power supply.				OPTIONS 0.15 mm ports (.006")	
	 4 Port		 6 Port*		 8 Port		 10 Port	
	Prod No	Price	Prod No	Price	Prod No	Price	Prod No	Price
Manual	C72H-1694		C72H-1696		C72H-1698		C72H-1690	
With pneumatic actuator	C72H-1694A		C72H-1696A		C72H-1698A		C72H-1690A	
With standard electric actuator	C72H-1694E		C72H-1696E		C72H-1698E		C72H-1690E	
With microelectric actuator	C72H-1694EH		C72H-1696EH		C72H-1698ED		C72H-1690ED	
Replacement valve	C72H-1694D		C72H-1696D		C72H-1698D		C72H-1690D	
Replacement rotor	C72-16R4		C72-16R6		C72-16R8		C72-16R0	
Replacement stator	C72-1C94		C72-1C96		C72-1C98		C72-1C90	

Stainless steel sample loops

for C72X and C72H valves

Each loop includes two stainless steel nuts and ferrules.

Metal loops > 2 ml are made from 1/8" OD tubing with brazed or welded 1/16" tube ends or reducing unions.

Volume	Prod No	Price	Volume	Prod No	Price	Volume	Prod No	Price
2 µl	CSL2		50 µl	CSL50		1 ml	CSL1K	
5 µl	CSL5		100 µl	CSL100		2 ml	CSL2K	
10 µl	CSL10		250 µl	CSL250		5 ml	CSL5K	
20 µl	CSL20		500 µl	CSL500		10 ml	CSL10K	



Model C72H
(C72X similar)
1/16" ZDV fittings

CHROMalytic TECHNOlogy Pty Ltd AUSTRALIAN Distributors e-mail: sales@chromtech.net.au Tel: 03 9762 2034

**NEW 15,000 psi UHPLC microbore internal sample injectors,
1/16" Valco fittings, 0.25 mm ports (.010")**

Model C74X

SPECS

15,000 psi liq
50°C max
Stainless stator
with inert coating
Valcon E3 rotor

Includes stainless steel
nuts and ferrules.

Standard electric actuator:
110 VAC for USA
110/230 VAC to 24 VDC power supply for
international.
Microelectric actuator:
24 VDC, with 110/230 VAC to 24 VDC
power supply.



15,000 psi

Microbore

Internal sample

1/16" 0.25 mm

OPTIONS

0.15 mm ports (.006")

	10 nanoliters		20 nanoliters		50 nanoliters	
	Prod No	Price	Prod No	Price	Prod No	Price
Manual	C74X-1694-.01		C74X-1694-.02		C74X-1694-.05	
With pneumatic actuator	C74X-1694-.01A		C74X-1694-.02A		C74X-1694-.05A	
With standard electric actuator	C74X-1694-.01E		C74X-1694-.02E		C74X-1694-.05E	
With microelectric actuator	C74X-1694-.01EH		C74X-1694-.02EH		C74X-1694-.05EH	
Replacement valve	C74X-1694-.01D		C74X-1694-.02D		C74X-1694-.05D	
Replacement rotor	C74-16R-.01		C74-16R-.02		C74-16R-.05	
Replacement stator	C74-1C9		C74-1C9		C74-1C9	

**NEW 10,000 psi UHPLC microbore internal sample injectors,
1/16" Valco fittings, 0.25 mm ports (.010")**

Model C74H

SPECS

10,000 psi liq
50°C max
Stainless stator
with inert coating
Valcon E3 rotor

Includes stainless steel
nuts and ferrules.

Standard electric actuator:
110 VAC for USA
110/230 VAC to 24 VDC power supply for
international.
Microelectric actuator:
24 VDC, with 110/230 VAC to 24 VDC
power supply.



10,000 psi

Microbore

Internal sample

1/16" 0.25 mm

OPTIONS

0.15 mm ports (.006")

	10 nanoliters		20 nanoliters		50 nanoliters	
	Prod No	Price	Prod No	Price	Prod No	Price
Manual	C74H-1694-.01		C74H-1694-.02		C74H-1694-.05	
With pneumatic actuator	C74H-1694-.01A		C74H-1694-.02A		C74H-1694-.05A	
With standard electric actuator	C74H-1694-.01E		C74H-1694-.02E		C74H-1694-.05E	
With microelectric actuator	C74H-1694-.01EH		C74H-1694-.02EH		C74H-1694-.05EH	
Replacement valve	C74H-1694-.01D		C74H-1694-.02D		C74H-1694-.05D	
Replacement rotor	C74-16R-.01		C74-16R-.02		C74-16R-.05	
Replacement stator	C74-1C9		C74-1C9		C74-1C9	

MORE INFORMATION

Actuators

Air page 195

Microelectric .. 188-189

Standard electric ... 193

Materials

Metals..... 254-255

Polymers 256

Valve rotors..... 257

Standoff

assemblies 205-207



Model C74H
(C74X similar)
1/16" ZDV fittings

Microbore HPLC

Microbore valves, 1/16" Valco fittings, 0.25 mm ports (.010")

Model C2

5,000 psi	Includes stainless steel nuts and ferrules of the stator material. Valves with PEEK stators have PEEK nuts and ferrules.	Standard electric actuator: 110 VAC for USA 110/230 VAC to 24 VDC power supply for international.	* The 6 port valve includes a 5 µl loop of the stator material.
Microbore		Microelectric actuator: 24 VDC, with 110/230 VAC to 24 VDC power supply.	
1/16"	0.25 mm		

SPECS

5000 psi liq
75°C max
Metal stator
Valcon H rotor

5000 psi liq
50°C max
PAEK stator
Valcon E rotor



4 Port

Prod No Price



6 Port*

Prod No Price



8 Port

Prod No Price



10 Port

Prod No Price

N60 stainless stator

Manual	C2-1004	C2-1006	C2H-1008	C2H-1000
With pneumatic actuator	C2-1004A	C2-1006A	C2H-1008A	C2H-1000A
With standard electric actuator	C2-1004E	C2-1006E	C2H-1008E	C2H-1000E
With microelectric actuator	C2-1004EH	C2-1006EH	C2H-1008EH	C2H-1000EH
Replacement valve	C2-1004D	C2-1006D	C2H-1008D	C2H-1000D
Replacement rotor	C2-10R4	C2-10R6	C2-10R8H	C2-10R0H
Replacement stator	C-1C04	C-1C06	C-1C08H	C-1C00H

PAEK stator

Manual	C2-1344	C2-1346	C2H-1348	C2H-1340
With pneumatic actuator	C2-1344A	C2-1346A	C2H-1348A	C2H-1340A
With standard electric actuator	C2-1344E	C2-1346E	C2H-1348E	C2H-1340E
With microelectric actuator	C2-1344EH	C2-1346EH	C2H-1348EH	C2H-1340EH
Replacement valve	C2-1344D	C2-1346D	C2H-1348D	C2H-1340D
Replacement rotor	C2-13R4	C2-13R6	C2-13R8H	C2-13R0H
Replacement stator	C-1C44	C-1C46	C-1C48H	C-1C40H

Titanium stator

Manual	C2-1034	C2-1036	C2H-1038	C2H-1030
With pneumatic actuator	C2-1034A	C2-1036A	C2H-1038A	C2H-1030A
With standard electric actuator	C2-1034E	C2-1036E	C2H-1038E	C2H-1030E
With microelectric actuator	C2-1034EH	C2-1036EH	C2H-1038EH	C2H-1030EH
Replacement valve	C2-1034D	C2-1036D	C2H-1038D	C2H-1030D
Replacement rotor	C2-10R4	C2-10R6	C2-10R8H	C2-10R0H
Replacement stator	C-1C34	C-1C36	C-1C38H	C-1C30H

OPTIONS

- Continuous flow version is available as Model C6.
See page 160.
- Hastelloy C stators
- Loop fill port assembly for injection from front of the valve.
See page 41.
- 0.15 mm (0.006") bore



Order loops from page 159.



Model C2
1/16" ZDV fittings

MORE INFORMATION

- Actuators
- Air page 195
 - Microelectric .. 188-189
 - Standard electric ... 193
- Materials
- Metals..... 254-255
 - Polymers 256
 - Valve rotors..... 257
- Nuts
- Metal..... 10
 - PEEK 63
- Ferrules
- Metal..... 12
 - PEEK 63
- Standoff assemblies 205-207

Microbore nanoliter sample injector, 1/16" Valco fittings, 0.15 mm ports (.006")

Model C4

SPECS
5000 psi liq
75°C max
 Metal stator
 Valcon H rotor

5000 psi liq
50°C max
 PAEK stator
 Valcon E rotor

Includes stainless steel nuts and ferrules of the stator material. Valves with PAEK stators have PEEK nuts and ferrules.

Standard electric actuator:
 110 VAC for USA
 110/230 VAC to 24 VDC power supply for international.
 Microelectric actuator:
 24 VDC, with 110/230 VAC to 24 VDC power supply.



5,000 psi

Microbore

Internal sample

1/16"

0.15 mm

OPTIONS

- 100, 200, and 500 nl sample volumes are also available in 0.25 mm bore. See page 162.
- Loop fill port assembly for injection from front of the valve. See page 41.
- 0.25 mm (0.010") bore

Sample volume

N60 stainless stator

Manual
 With pneumatic actuator

With standard electric actuator
 With microelectric actuator

Replacement valve
 Replacement rotor
 Replacement stator

PAEK stator

Manual
 With pneumatic actuator

With standard electric actuator
 With microelectric actuator

Replacement valve
 Replacement rotor
 Replacement stator

10 nanoliters

Prod No Price

C4-0004-.01
 C4-0004-.01A

 C4-0004-.01E
 C4-0004-.01EH

 C4-0004-.01D
 C4-00R-.01
 C4-0C0

20 nanoliters

Prod No Price

C4-0004-.02
 C4-0004-.02A

 C4-0004-.02E
 C4-0004-.02EH

 C4-0004-.02D
 C4-00R-.02
 C4-0C0

50 nanoliters

Prod No Price

C4-0004-.05
 C4-0004-.05A

 C4-0004-.05E
 C4-0004-.05EH

 C4-0004-.05D
 C4-00R-.05
 C4-0C0



Sample loops

for C1, C2, C2V, C3, and C6 valves

Each metal loop includes two stainless steel nuts and ferrules.
 Each PEEK loop includes two PEEK nuts and ferrules.

Volume	Stainless Steel		PEEK (for PAEK stators)		Titanium	
	Prod No	Price	Prod No	Price	Prod No	Price
2 µl	CSL2		CZSL2PK		–	
5 µl	CSL5		CZSL5PK		–	
10 µl	CSL10		CZSL10PK		CSL10TI	
20 µl	CSL20		CZSL20PK		CSL20TI	
50 µl	CSL50		CZSL50PK		CSL50TI	
100 µl	CSL100		CZSL100PK		CSL100TI	
250 µl	CSL250		CZSL250PK		CSL250TI	
500 µl	CSL500		CZSL500PK		CSL500TI	
1 ml	CSL1K		CZSL1KPK		CSL1KTI	
2 ml	CSL2K		CZSL2KPK		–	
5 ml	CSL5K		CZSL5KPK		–	
10 ml	CSL10K		–		–	

ABOUT LOOPS

- Other materials are available in many sizes: Electroformed Nickel, Hastelloy C, Nickel 200, and PTFE (see pages 254-256).
- Metal loops > 2 ml are made from 1/8" OD tubing with brazed or welded 1/16" tube ends or reducing unions.



Model C4
 1/16" ZDV fittings

Microbore HPLC

Microbore through-the-handle injector, 1/16" Valco fittings, 0.25 mm ports (.010")

Model C1

5,000 psi
Microbore
Through-the-handle
1/16" **0.25 mm**



Available only in manual version.
Position feedback included.

Includes stainless steel nuts and ferrules.
Valves with PEEK stators have PEEK nuts and ferrules.

Includes one 5 µl loop of the stator material.

SPECS

5000 psi liq
75°C max
Metal stator
Valcon H rotor

5000 psi liq
50°C max
PAEK stator
Valcon E rotor



Model C1 and C1CF
1/16" ZDV fittings

6 port injector
Replacement rotor
Replacement stator

Replacement injector fitting

N60 stainless stator

Prod No	Price
C1-1006	
C1-10R6	
C-1C06	

PAEK stator

Prod No	Price
C1-1346	
C1-13R6	
C-1C46	

Prod No	Price
C-261	



OPTIONS

- Titanium and Hastelloy stators available.
- 0.40 mm bore (.016") on page 163.

Microbore continuous flow through-the-handle injector, 1/16" Valco fittings, 0.25 mm ports (.010")

Model C1CF

5,000 psi
Microbore
Continuous flow
Through-the-handle
1/16" **0.25 mm**



Available only in manual version.
Position feedback included.

Includes stainless steel nuts and ferrules.
Valves with PEEK stators have PEEK nuts and ferrules.

Includes one 5 µl loop of the stator material.

SPECS

5000 psi liq
75°C max
Metal stator
Valcon H rotor

5000 psi liq
50°C max
PAEK stator
Valcon E rotor

6 port injector
Replacement rotor
Replacement stator

Replacement injector fitting

N60 stainless stator

Prod No	Price
C1CF-1006	
C1-10R6	
C6-1C06	

PAEK stator

Prod No	Price
C1CF-1346	
C1-13R6	
C6-1C46	

Prod No	Price
C-261	



OPTIONS

- 0.40 mm bore (.016") on page 163.

Microbore continuous flow injector, 1/16" Valco fittings, 0.25 mm ports (.010")

Model C6

5,000 psi
Microbore
Continuous flow
1/16" **0.25 mm**

Includes stainless steel nuts and ferrules.

* Includes a 5 µl loop of the stator material.

Standard electric actuator:
110 VAC for USA
110/230 VAC to 24 VDC power supply for international.

Microelectric actuator:
24 VDC, with 110/230 VAC to 24 VDC power supply.

N60 stainless stator

Prod No	Price
C6-1006	
C6-1006A	

PAEK stator

Prod No	Price
C6-1346	
C6-1346A	
C6-1346E	
C6-1346EH	

Manual
With pneumatic actuator

With standard electric actuator
With microelectric actuator

Replacement valve
Replacement rotor
Replacement stator

C6-1006D	C6-1346D
C2-10R6	C2-13R6
C6-1C06	C6-1C46



Model C6
1/16" ZDV fittings

SPECS

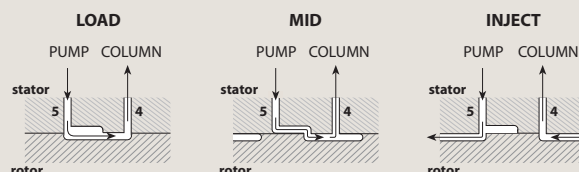
5000 psi liq
75°C max
Metal stator
Valcon H rotor

5000 psi liq
50°C max
PAEK stator
Valcon E rotor

Order loops from page 159.

C1CF and C6 CONTINUOUS FLOWPATH

An engraving on the stator maintains pump flow between ports 5 and 4 during most of the switching cycle, virtually eliminating pressure spikes.



Analytical valves, 1/16" Valco fittings, 0.40 mm ports (.016")

Model C2

SPECS

5000 psi liq
75°C max
Metal stator
Valcon H rotor

5000 psi liq
50°C max
PAEK stator
Valcon E rotor

Includes stainless steel nuts and ferrules of the stator material. Valves with PEEK stators have PEEK nuts and ferrules.

Standard electric actuator:
110 VAC for USA
110/230 VAC to 24 VDC power supply for international.
Microelectric actuator:
24 VDC, with 110/230 VAC to 24 VDC power supply.

* The 6 port valve includes a 20 µl loop of the stator material.

5,000 psi**Analytical****1/16"****0.40 mm****OPTIONS**

- Continuous flow version is available as Model C6. See page 163.
- Hastelloy C stators
- Semi-prep version with 0.75 mm ports (.030") available
- Loop fill port assembly for injection from front of the valve. See page 41.



Order loops from page 159.

OPTIONAL FLOWPATH

Model C2 6 port valves can also be ordered with a dual 3-way rotor, as described in EPA Method 555.

To specify this flowpath, substitute "6X" for "6" in the valve or rotor product number.

**AUTOSAMPLER REPLACEMENT VALVES**

The Cheminert Model C2 6 port valve is an excellent replacement for the valve originally supplied in many autosamplers, including autosamplers manufactured by Beckman, Gilson, Spark-Holland, CTC, Thermo Fisher, and Varian.

Call technical support to determine which replacement is best for your application.

**4 Port**

Prod No Price

**6 Port***

Prod No Price

**8 Port**

Prod No Price

**10 Port**

Prod No Price

N60 stainless stator

Manual C2-2004
With pneumatic actuator C2-2004A

With standard electric actuator C2-2004E
With microelectric actuator C2-2004EH

Replacement valve C2-2004D
Replacement rotor C2-20R4
Replacement stator C-2C04

PAEK stator

Manual C2-2344
With pneumatic actuator C2-2344A

With standard electric actuator C2-2344E
With microelectric actuator C2-2344EH

Replacement valve C2-2344D
Replacement rotor C2-23R4
Replacement stator C-2C44

Titanium stator

Manual C2-2034
With pneumatic actuator C2-2034A

With standard electric actuator C2-2034E
With microelectric actuator C2-2034EH

Replacement valve C2-2034D
Replacement rotor C2-20R4
Replacement stator C-2C34

C2-2006
C2-2006A

C2-2006E
C2-2006EH

C2-2006D
C2-20R6
C-2C06

C2-2346
C2-2346A

C2-2346E
C2-2346EH

C2-2346D
C2-23R6
C-2C46

C2-2036
C2-2036A

C2-2036E
C2-2036EH

C2-2036D
C2-20R6
C-2C36

C2H-2008
C2H-2008A

C2H-2008E
C2H-2008EH

C2H-2008D
C2-20R8H
C-2C08H

C2H-2348
C2H-2348A

C2H-2348E
C2H-2348EH

C2H-2348D
C2-23R8H
C-2C48H

C2H-2038
C2H-2038A

C2H-2038E
C2H-2038EH

C2H-2038D
C2-20R8H
C-2C38H

C2H-2000
C2H-2000A

C2H-2000E
C2H-2000EH

C2H-2000D
C2-20R0H
C-2C00H

C2H-2340
C2H-2340A

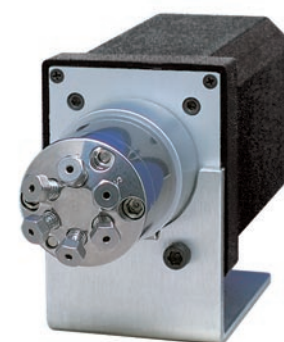
C2H-2340E
C2H-2340EH

C2H-2340D
C2-23R0H
C-2C40H

C2H-2030
C2H-2030A

C2H-2030E
C2H-2030EH

C2H-2030D
C2-20R0H
C-2C30H



Model C2
1/16" ZDV fittings

Analytical HPLC

Analytical internal sample injector, 1/16" Valco fittings, 0.25 mm ports (.010")

Model C4

5,000 psi

Analytical

Internal sample

1/16"

0.25 mm



Includes stainless steel nuts and ferrules of the stator material. Valves with PAEK stators have PEEK nuts and ferrules.

Standard electric actuator:
110 VAC for USA
110/230 VAC to 24 VDC power supply for international.
Microelectric actuator:
24 VDC, with 110/230 VAC to 24 VDC power supply.

SPECS

5000 psi liq
75°C max
Metal stator
Valcon H rotor

5000 psi liq
50°C max
PAEK stator
Valcon E rotor

Sample volume	0.1 µl		0.2 µl		0.5 µl	
	Prod No	Price	Prod No	Price	Prod No	Price
N60 stainless stator						
Manual	C4-1004-.1		C4-1004-.2		C4-1004-.5	
With pneumatic actuator	C4-1004-.1A		C4-1004-.2A		C4-1004-.5A	
With standard electric actuator	C4-1004-.1E		C4-1004-.2E		C4-1004-.5E	
With microelectric actuator	C4-1004-.1EH		C4-1004-.2EH		C4-1004-.5EH	
Replacement valve	C4-1004-.1D		C4-1004-.2D		C4-1004-.5D	
Replacement rotor	C4-10R-.1		C4-10R-.2		C4-10R-.5	
Replacement stator	C4-1C0		C4-1C0		C4-1C0	
PAEK stator						
Manual	C4-1344-.1		C4-1344-.2		C4-1344-.5	
With pneumatic actuator	C4-1344-.1A		C4-1344-.2A		C4-1344-.5A	
With standard electric actuator	C4-1344-.1E		C4-1344-.2E		C4-1344-.5E	
With microelectric actuator	C4-1344-.1EH		C4-1344-.2EH		C4-1344-.5EH	
Replacement valve	C4-1344-.1D		C4-1344-.2D		C4-1344-.5D	
Replacement rotor	C4-13R-.1		C4-13R-.2		C4-13R-.5	
Replacement stator	C4-1C4		C4-1C4		C4-1C4	
Titanium stator						
Manual	C4-1034-.1		C4-1034-.2		C4-1034-.5	
With pneumatic actuator	C4-1034-.1A		C4-1034-.2A		C4-1034-.5A	
With standard electric actuator	C4-1034-.1E		C4-1034-.2E		C4-1034-.5E	
With microelectric actuator	C4-1034-.1EH		C4-1034-.2EH		C4-1034-.5EH	
Replacement valve	C4-1034-.1D		C4-1034-.2D		C4-1034-.5D	
Replacement rotor	C4-10R-.1		C4-10R-.2		C4-10R-.5	
Replacement stator	C4-1C3		C4-1C3		C4-1C3	

OPTIONS

- .05 µl sample volumes are also available.
- Loop fill port assembly for injection from front of the valve.
See page 41.



Model C4
1/16" ZDV fittings

MORE INFORMATION

Actuators
Air page 195
Microelectric .. 188-189
Standard electric ... 193
Materials
Metals..... 254-255
Polymers 256
Valve rotors..... 257
Standoff
assemblies 205-207

Analytical through-the-handle injector, 1/16" Valco fittings, 0.40 mm ports (.016")

Model C1

SPECS

5000 psi liq
75°C max
Metal stator
Valcon H rotor

5000 psi liq
50°C max
PAEK stator
Valcon E rotor

Available only in manual version.
Position feedback included.

Includes stainless steel nuts and ferrules.
Valves with PAEK stators have PEEK nuts and ferrules.

Includes one 20 µl loop of the stator material.



5,000 psi

Analytical

Through-handle

1/16" 0.40 mm

OPTIONS

- Titanium stator available.
- 0.25 mm bore (.010") on page 160.

6 port injector
Replacement rotor
Replacement stator

N60 stainless stator

Prod No

Price

C1-2006

C1-20R6

C-2C06

Prod No

Price

C-261

**PAEK stator**

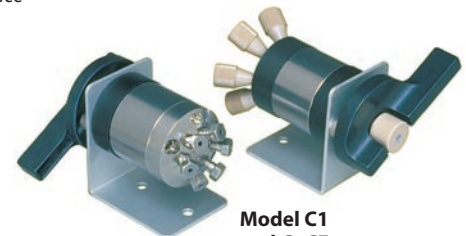
Prod No

Price

C1-2346

C1-23R6

C-2C46



Model C1 and C1CF
1/16" ZDV fittings

Analytical continuous flow through-the-handle injector, 1/16" Valco fittings, 0.40 mm ports (.016")

Model C1CF

SPECS

5000 psi liq
75°C max
Metal stator
Valcon H rotor

5000 psi liq
50°C max
PAEK stator
Valcon E rotor

Available only in manual version.
Position feedback included.

Includes stainless steel nuts and ferrules.
Valves with PAEK stators have PEEK nuts and ferrules.

Includes one 20 µl loop of the stator material.



5,000 psi

Analytical

Continuous flow

Through-handle

1/16" 0.40 mm

OPTIONS

- 0.25 mm bore (.010") on page 160.

6 port injector
Replacement rotor
Replacement stator
Prod No

N60 stainless stator

Prod No

Price

C1CF-2006

C1-20R6

C6-2C06

Price

PAEK stator

Prod No

Price

C1CF-2346

C1-23R6

C6-2C46

C-261



Analytical continuous flow injector, 1/16" Valco fittings, 0.40 mm ports (.016")

Model C6

SPECS

5000 psi liq
75°C max
Metal stator
Valcon H rotor

5000 psi liq
50°C max
PAEK stator
Valcon E rotor

Includes stainless steel nuts and ferrules.

Includes a 20 µl loop of the stator material.

Standard electric actuator:
110 VAC for USA
110/230 VAC to 24 VDC power supply for international.

Microelectric actuator:
24 VDC, with 110/230 VAC to 24 VDC power supply.

N60 stainless stator

Prod No

Price

C6-2006

C6-2006A

C6-2006E

C6-2006EH

C6-2006D

C2-20R6

C6-2C06

PAEK stator

Prod No

Price

C6-2346

C6-2346A

C6-2346E

C6-2346EH

C6-2346D

C2-23R6

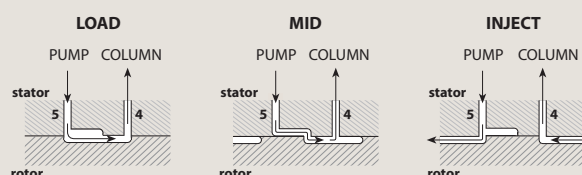
C6-2C46

Manual
With pneumatic actuator
With standard electric actuator
With microelectric actuator
Replacement valve
Replacement rotor
Replacement stator

Order loops from page 159.

C1CF and C6 CONTINUOUS FLOWPATH

An engraving on the stator maintains pump flow between ports 5 and 4 during most of the switching cycle, virtually eliminating pressure spikes.



Model C6
1/16" ZDV fittings

Low Pressure




Valves with 1/16" Valco ZDV fittings, 0.75 mm ports (.030")

Model C22Z

<div>Low pressure</div> <div>10-32 ZDV</div> <div>1/16"0.75 mm</div>	Includes Valco ZDV PEEK nuts and ferrules.		Standard electric actuator: 110 VAC for USA 110/230 VAC to 24 VDC power supply for international. Microelectric actuator: 24 VDC, with 110/230 VAC to 24 VDC power supply.		Sample loops are not included with valves. Order separately.		<div>SPECS</div> <div>100 psi gas/ 250 psi liq</div> <div>75°C max</div> <div>PPS stator</div> <div>Valcon E2 rotor</div>	
							<div>OPTIONS</div> <div>■ Purge option</div> <div>■ Other polymeric rotors and stators are available.</div> <div>Consult the factory for prices and information.</div>	
							<div>PURGE OPTION</div> <div>The purge option permits</div>	

Valves with 1/4-28 fitting details for 1/16" tubing, 0.75 mm ports (.030")

Model C22

<div>SPECS</div> <div>100 psi gas/ 250 psi liq</div> <div>75°C max</div> <div>PPS stator</div> <div>Valcon E2 rotor</div>	Includes multicolored Cheminert 1/4-28 flangeless fittings for 1/16" tubing.		Standard electric actuator: 110 VAC for USA 110/230 VAC to 24 VDC power supply for international.		Sample loops are not included with valves. Order separately.		Low pressure		
			Microelectric actuator: 24 VDC, with 110/230 VAC to 24 VDC power supply.				1/4-28 Internal		
							1/16" 0.75 mm		
									
			4 Port		6 Port		8 Port		
		Prod No	Price	Prod No	Price	Prod No	Price	Prod No	Price
	Manual	C22-3184		C22-3186		C22-3188		C22-3180	
	With pneumatic actuator	C22-3184A		C22-3186A		C22-3188A		C22-3180A	
	With standard electric actuator	C22-3184E		C22-3186E		C22-3188E		C22-3180E	
	With microelectric actuator	C22-3184EH		C22-3186EH		C22-3188EH		C22-3180EH	
	Replacement valve	C22-3184D		C22-3186D		C22-3188D		C22-3180D	
	Replacement rotor	C22-314		C22-316		C22-318		C22-310	
	Replacement stator	C22-384		C22-386		C22-388		C22-380	

Valves with 1/4-28 fitting details for 1/8" tubing, 1.50 mm ports (.060")

Model

<div>SPECS</div> <div>100 psi gas/ 250 psi liq</div> <div>75°C max</div> <div>PPS stator</div> <div>Valcon E2 rotor</div>	Includes multicolored Cheminert 1/4-28 flangeless fittings for 1/8" tubing.		Standard electric actuator: 110 VAC for USA 110/230 VAC to 24 VDC power supply for international.		Sample loops are not included with valves. Order separately.		<div>Low pressure</div> <div>1/4-28 Internal</div> <div>1/8"1.50 mm</div>		
			Microelectric actuator: 24 VDC, with 110/230 VAC to 24 VDC power supply.						
			<div>4 Port</div> <div>Prod NoPrice</div>		<div>6 Port</div> <div>Prod NoPrice</div>		<div>8 Port</div> <div>Prod NoPrice</div>		<div>10 Port</div> <div>Prod NoPrice</div>
	Manual		C22-6184		C22-6186		C22-6188		C22-6180
	With pneumatic actuator		C22-6184A		C22-6186A		C22-6188A		C22-6180A
With standard electric actuator		C22-6184E		C22-6186E		C22-6188E		C22-6180E	
With microelectric actuator		C22-6184EH		C22-6186EH		C22-6188EH		C22-6180EH	
Replacement valve		C22-6184D		C22-6186D		C22-6188D		C22-6180D	
Replacement rotor		C22-614		C22-616		C22-618		C22-610	
Replacement stator		C22-684		C22-686		C22-688		C22-680	

Sample loops

for Model C22

Loops include flangeless fittings with white color nuts. Loops smaller than 500 µl are made from 1/16" OD tubing; loops 500 µl or bigger are made from 1/8" OD tubing.

Volume	FEP		PTFE		PEEK	
	Prod No	Price	Prod No	Price	Prod No	Price
20 µl	CFSL20FEP		CFSL20TF	\$17.50	CFSL20PK	
50 µl	CFSL50FEP		CFSL50TF		CFSL50PK	
100 µl	CFSL100FEP		CFSL100TF		CFSL100PK	
250 µl	CFSL250FEP		CFSL250TF		CFSL250PK	
500 µl	CFSL500FEP		CFSL500TF		CFSL500PK	
1 ml	CFSL1KFEP		CFSL1KTF		CFSL1KPK	
2 ml	CFSL2KFEP		CFSL2KTF		CFSL2KPK	



Model C22
1/4-28 fittings

Low Pressure

Internal sample injectors, 1/16" Valco ZDV fittings, 0.40 mm ports (.016")

Model C24Z

Low pressure

Internal sample

10-32 ZDV

1/16" 0.40 mm



Includes Valco ZDV
PEEK nuts and ferrules.

Standard electric actuator:
110 VAC for USA
110/230 VAC to 24 VDC power supply for
international.
Microelectric actuator:
24 VDC, with 110/230 VAC to 24 VDC
power supply.

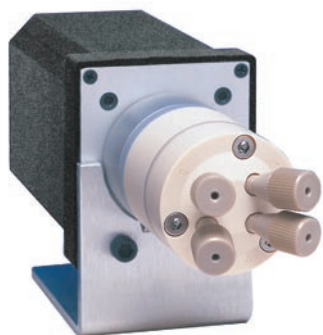
SPECS

100 psi gas/ 250 psi liq
75°C max
PPS stator
Valcon E2 rotor

Sample volume	0.2 µl		0.5 µl		1 µl	
	Prod No	Price	Prod No	Price	Prod No	Price
Manual	C24Z-2184-.2		C24Z-2184-.5		C24Z-2184-1	
With pneumatic actuator	C24Z-2184-.2A		C24Z-2184-.5A		C24Z-2184-1A	
With standard electric actuator	C24Z-2184-.2E		C24Z-2184-.5E		C24Z-2184-1E	
With microelectric actuator	C24Z-2184-.2EH		C24Z-2184-.5EH		C24Z-2184-1EH	
Replacement valve	C24Z-2184-.2D		C24Z-2184-.5D		C24Z-2184-1D	
Replacement rotor	C24-10R-.2		C24-10R-.5		C24-10R-1	
Replacement stator	C24Z-1C8		C24Z-1C8		C24Z-1C8	

OPTIONS

- 2.0 µl sample volumes are also available.
- Purge option. *See more information below.*
- Other polymeric rotors and stators are available. Consult the factory for prices and information.



Model C24Z
1/16" ZDV fittings

PURGE OPTION

The purge option permits a flow of liquid or gas to flush the valve interior of potentially toxic or corrosive components. We recommend this option for applications using materials (such as salt solutions) that could damage the metal parts of the valve.

Consult our technical staff for details.

MORE INFORMATION

Actuators	
.....	page 195
Microelectric ..	188-189
Standard electric ...	193
Materials	
.....	254-255
.....	256
Metals
Polymers	257
Standoff	
Valve rotors....	205-207
assemblies	

Internal sample injectors, 1/4-28 for 1/16" tubing, 0.50 mm ports (.020")

Model C24

SPECS
 100 psi gas/ 250 psi liq
 75°C max
 PPS stator
 Valcon E2 rotor

Includes multicolored
 Cheminert 1/4-28
 flangeless fittings for
 1/16" tubing.

Standard electric actuator:
 110 VAC for USA
 110/230 VAC to 24 VDC power supply for
 international.
 Microelectric actuator:
 24 VDC, with 110/230 VAC to 24 VDC
 power supply.



Low pressure

Internal sample

1/4-28 Internal

1/16" 0.50 mm

OPTIONS

- 0.2 µl sample volumes are also available.
- Purge option
- Other polymeric rotors and stators are available. Consult the factory for prices and information.

Sample volume

0.5 µl

1 µl

2 µl

	Prod No	Price	Prod No	Price	Prod No	Price
Manual	C24-2184-.5		C24-2184-1		C24-2184-2	
With pneumatic actuator	C24-2184-.5A		C24-2184-1A		C24-2184-2A	
With standard electric actuator	C24-2184-.5E		C24-2184-1E		C24-2184-2E	
With microelectric actuator	C24-2184-.5EH		C24-2184-1EH		C24-2184-2EH	
Replacement valve	C24-2184-.5D		C24-2184-1D		C24-2184-2D	
Replacement rotor	C24-10R-.5		C24-10R-1		C24-10R-2	
Replacement stator	C24-1C8		C24-1C8		C24-1C8	



Model C24
 1/4-28 fittings

Injector and Switching Valve Applications

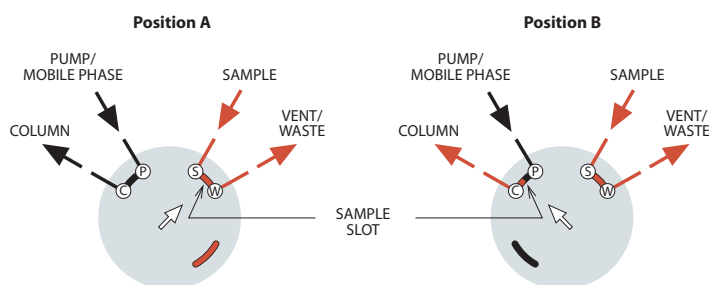
These illustrations show basic sample injection techniques using Valco two position valves. With rare exceptions, there is no difference between switching valves and external volume sampling valves, so the same valve can be used for either function.

The unique advantage of 8 and 10 port valves is that they reduce extra column volume by combining sampling and switching functions in a single valve. This minimizes expense, maintenance, service, and risk of leaks as compared to multiple 6 port valve systems.

4 port internal sample injector

MICROVOLUME SAMPLE INJECTION

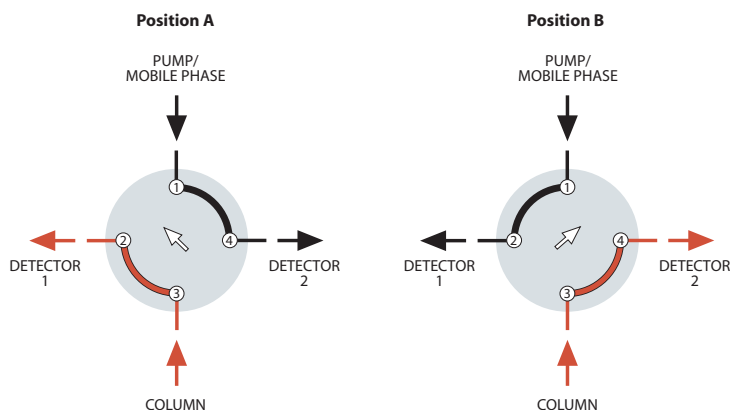
The internal sample (fixed volume) flowpath is used when very small sample volumes are required. The sample size is determined by a passage engraved on the valve rotor, allowing precise, repeatable injections. In Position A, the sample flows through the sample passage while the mobile phase flows through to the column. The third passage is inactive. In Position B, the sample passage is in line with the column and the mobile phase injects the contents of the sample passage into the column. The passage which was inactive in Position A allows the sample to continue flowing without interruption.



4 port switching valve

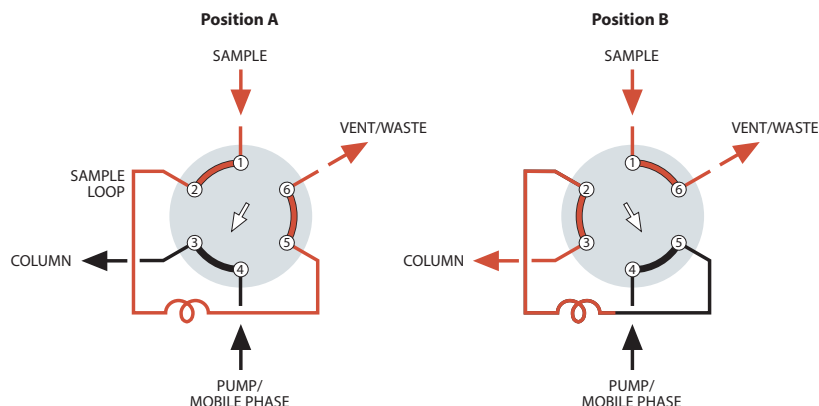
DETECTOR SELECTION FROM TWO COLUMNS OR ONE COLUMN AND AUXILIARY CARRIER

This unique configuration allows analyses of different parts of one analysis with two different detectors, without splitting or multiple injections.



Injector and Switching Valve Applications

6 port external sample injector

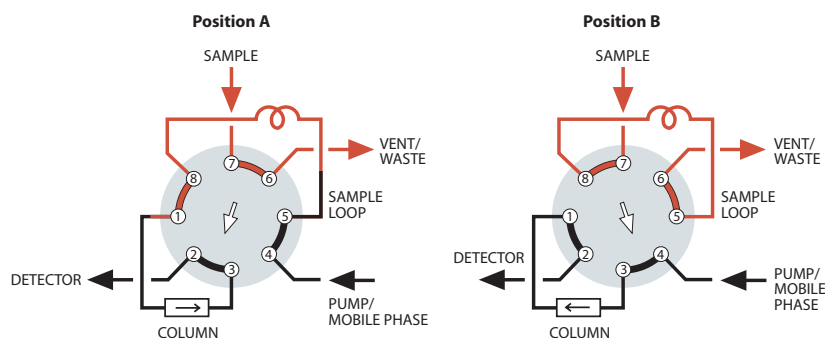


SAMPLE INJECTION

With the valve in Position A, sample flows through the external loop while the mobile phase flows directly through to the column. When the valve is switched to Position B, the sample contained in the sample loop and valve flow passage is displaced by the mobile phase and is carried into the column. *Note:* Especially for partial-filled loops, the flow direction of the mobile phase through the loop should be opposite (backflush) to the flow direction during the loading of the loop.

More applicationspages 118-119

8 port sampling/switching

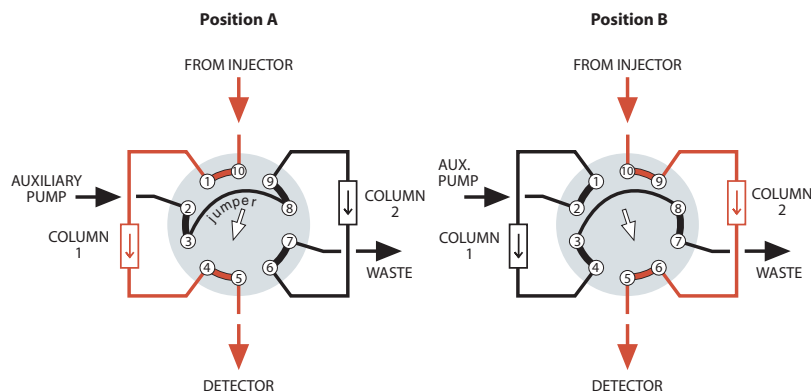


LOOP SAMPLING WITH BACKFLUSH TO DETECTOR

One valve performs the functions of sampling and backflush valves, simplifying operation and reducing cost. When components of interest are detected, the strongly retained components are backflushed and removed from the column without temperature programming.

More applications page 119

10 port sampling/switching



ALTERNATE COLUMN REGENERATION

When columns must be regenerated following each analysis, this technique permits automation of the process. While one column performs the analysis, the second column undergoes regeneration through use of an auxiliary pump. Once the first analysis is complete, the valve is switched and the regenerated column is ready for analytical use.

More applicationspages 120-121

NEW Selectors – Nanovolume UHPLC

NEW 15,000 psi UHPLC Nanovolume selectors, 1/32" Valco fittings, 150 micron ports (.006")

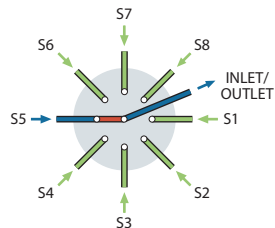
Model C75NX

15,000 psi
Stream selector
1/32" **150 µm**

Includes 1/32" Valco stainless steel fittings.



Manual version not available.
Standard electric actuator:
110 VAC for USA
110/230 VAC to 24 VDC power supply for international.
Microelectric actuator:
24 VDC, with 110/230 VAC to 24 VDC power supply.



SPECS

15,000 psi liq
50°C max
Stainless stator
with inert coating
Valcon E3 rotor

OPTIONS

- 100 micron (.004") bore
- 250 micron (.010") bore
- 10,000 and 20,000 psi versions available
- 4 positions

	6 Position		8 Position		10 Position	
	Prod No	Price	Prod No	Price	Prod No	Price
Coated stainless stator						
With pneumatic actuator	C75NX-6696A		C75NX-6698A		C75NX-6690A	
With standard electric actuator	C75NX-6696E		C75NX-6698E		C75NX-6690E	
With microelectric actuator	C75NX-6696EMH		C75NX-6698EMT		C75NX-6690EMT	
Replacement valve	C75NX-6696D		C75NX-6698D		C75NX-6690D	
Replacement rotor	C75N-66R6		C75N-66R8		C75N-66R0	
Replacement stator	C75N-6C96		C75N-6C98		C75N-6C90	

Model C75NX
1/32" Valco stainless
fittings



**NEW 10,000 psi UHPLC microbore selectors,
1/16" Valco fittings, 250 micron ports (.010")**

Model C75H

SPECS

10,000 psi liq
50°C max
 Stainless stator
 with inert coating
 Valcon E3 rotor



Includes 1/16" Valco
 stainless steel fittings.

Manual version not available.

Standard electric actuator:

110 VAC for USA

110/230 VAC to 24 VDC power supply for
 international.

Microelectric actuator:

24 VDC, with 110/230 VAC to 24 VDC
 power supply.

10,000 psi

Stream selector

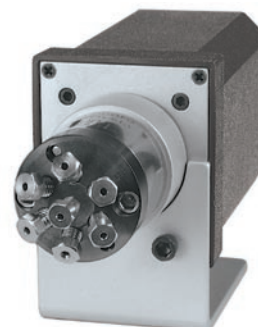
1/16"

250 µm

OPTIONS

- 150 micron (.006") bore
- 15,000 psi version available
- 4 positions

	6 Position		8 Position		10 Position	
	Prod No	Price	Prod No	Price	Prod No	Price
Coated stainless stator						
With pneumatic actuator	C75H-1696A		C75H-1698A		C75H-1690A	
With standard electric actuator	C75H-1696E		C75H-1698E		C75H-1690E	
With microelectric actuator	C75H-1696EMH		C75H-1698EMT		C75H-1690EMT	
Replacement valve	C75H-1696D		C75H-1698D		C75H-1690D	
Replacement rotor	C75-16R6		C75-16R8		C75-16R0	
Replacement stator	C75-1C96		C75-1C98		C75-1C90	



Model C75H
 1/16" Valco stainless
 fittings

Selectors – High Pressure

HPLC stream selector, 1/16" Valco ZDV fittings, 0.40 mm ports (.016")

Model C5

5,000 psi

Stream selector

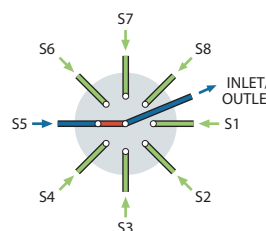
10-32 ZDV

1/16"

0.40 mm

Includes stainless steel nuts and ferrules of the stator material. Valves with PAEK stators have PEEK nuts and ferrules.

Standard electric actuator:
110 VAC for USA
110/230 VAC to 24 VDC power supply for international.
Microelectric actuator:
24 VDC, with 110/230 VAC to 24 VDC power supply.



SPECS

5000 psi liq
75°C max
Metal stator
Valcon H rotor

5000 psi liq
50°C max
PAEK stator
Valcon E rotor

	4 Position		6 Position		8 Position		10 Position	
	Prod No	Price	Prod No	Price	Prod No	Price	Prod No	Price
N60 stainless stator								
Manual	C5-2004		C5-2006		C5H-2008		C5H-2000	
With pneumatic actuator	C5-2004A		C5-2006A		C5H-2008A		C5H-2000A	
With standard electric actuator	C5-2004E		C5-2006E		C5H-2008E		C5H-2000E	
With microelectric actuator	C5-2004EMH		C5-2006EMH		C5H-2008EMT		C5H-2000EMT	
Replacement valve	C5-2004D		C5-2006D		C5H-2008D		C5H-2000D	
Replacement rotor	C5-20R4		C5-20R6		C5-20R8H		C5-20R0H	
Replacement stator	C5-2C04		C5-2C06		C5-2C08H		C5-2C00H	
PAEK stator								
Manual	C5-2344		C5-2346		C5H-2348		C5H-2340	
With pneumatic actuator	C5-2344A		C5-2346A		C5H-2348A		C5H-2340A	
With standard electric actuator	C5-2344E		C5-2346E		C5H-2348E		C5H-2340E	
With microelectric actuator	C5-2344EMH		C5-2346EMH		C5H-2348EMT		C5H-2340EMT	
Replacement valve	C5-2344D		C5-2346D		C5H-2348D		C5H-2340D	
Replacement rotor	C5-23R4		C5-23R6		C5-23R8H		C5-23R0H	
Replacement stator	C5-2C44		C5-2C46		C5-2C48H		C5-2C40H	
Titanium stator								
Manual	C5-2034		C5-2036		C5H-2038		C5H-2030	
With pneumatic actuator	C5-2034A		C5-2036A		C5H-2038A		C5H-2030A	
With standard electric actuator	C5-2034E		C5-2036E		C5H-2038E		C5H-2030E	
With microelectric actuator	C5-2034EMH		C5-2036EMH		C5H-2038EMT		C5H-2030EMT	
Replacement valve	C5-2034D		C5-2036D		C5H-2038D		C5H-2030D	
Replacement rotor	C5-20R4		C5-20R6		C5-20R8H		C5-20R0H	
Replacement stator	C5-2C34		C5-2C36		C5-2C38H		C5-2C30H	

OPTIONS

- 2", 3", 4", and 6" standoffs
- Hastelloy C stator
- Optional 0.15 mm (.006") and 0.25 mm (.010") bores available
- Optional 0.75 mm (.030") bore for Prep HPLC available

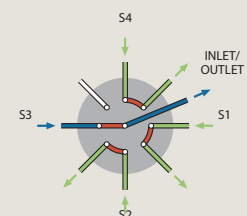
MORE INFORMATION

Manifolds page 33

OPTIONAL FLOWPATH

Model C5F, the flow-through version, is similar to the C5 but its non-selected streams continue flowing through individual outlets. 3, 4, and 5 positions are available.

Consult the factory for C5F prices and information.



Model C5F
schematic diagram



Model C5
6 positions
1/16" ZDV fittings

Selectors – High Pressure

HPLC column selector system with 1/16" Valco ZDV fittings, 0.40 mm ports (.016")

Model C5

SPECS

5000 psi liq
75°C max
 Metal stator
 Valcon H rotor

5000 psi liq
50°C max
 PAEK stator
 Valcon E rotor

The system comprises two stream selection valves mounted on a single microelectric actuator, which can be controlled manually, via remote logic level signal, or by RS-232 interface (RS-485 optional). See plumbing diagram below.

Includes stainless steel nuts and ferrules of the stator material.

Valves with PAEK stators have PEEK nuts and ferrules.

Includes microelectric actuator:
 24 VDC, with 110/230 VAC to 24 VDC power supply.

5,000 psi**Column selector system****10-32 ZDV****1/16" 0.40 mm****OPTIONS**

- 2", 3", 4", and 6" standoffs
- Hastelloy C stator
- Optional 0.25 mm (.010") bore available
- Optional 0.75 mm (.030") bore for Prep HPLC available

N60 stainless stator

System

Replacement valve

Replacement rotor

Replacement stator*

PAEK stator

System

Replacement valve

Replacement rotor

Replacement stator*

6 Column

Prod No

Price

8 Column

Prod No

Price

10 Column

Prod No

Price

C5-2006EMTD

C5H-2008EMTD

C5H-2000EMTD

C5-2006D

C5H-2008D

C5H-2000D

C5-20R6

C5-20R8H

C5-20R0H

C5-2C06

C5-2C08H

C5-2C00H

C5-2346EMTD

C5H-2348EMTD

C5H-2340EMTD

C5-2346D

C5H-2348D

C5H-2340D

C5-23R6

C5-23R8H

C5-23R0H

C5-2C46

C5-2C48H

C5-2C40H

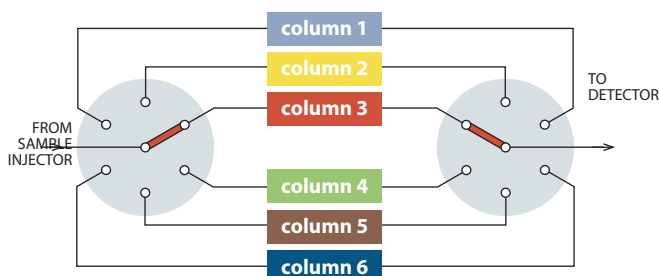
* See note on ordering stators, below.

RS-232 interface cable

Prod No

Price

I-22697

**MORE INFORMATION****Actuators**

Air page 194

Microelectric .. 190-191

Standard electric ... 193

Loop fill port

assembly 41

Materials

Metals..... 254-255

Polymers 256

Valve rotors..... 257

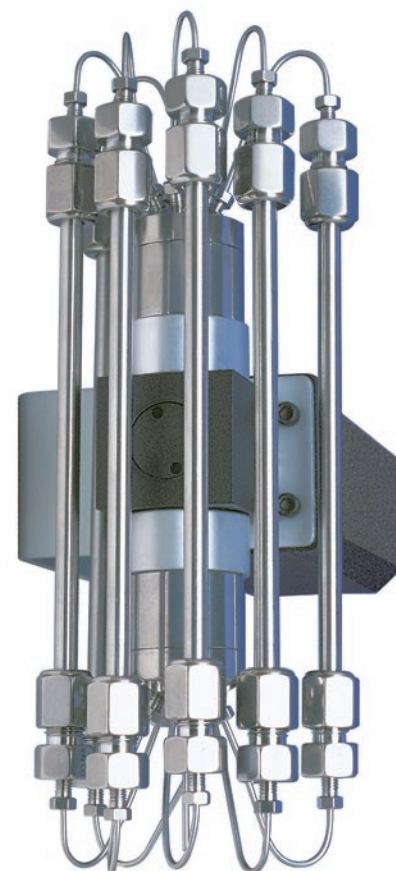
Standoff

assemblies 205-207

ORDERING STATORS

Valves for dual drive assemblies have mirror image stators. Consult Technical Support for correct product number before ordering.

Both valves use the same rotor.

**Model C5 system**

Columns not included

Selectors – Low Pressure

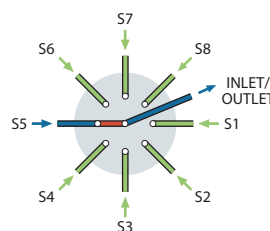
Stream selector, 1/16" Valco ZDV fittings, 0.75 mm ports (.030")

Model C25Z

Low pressure
Stream selector
10-32 ZDV
1/16" 0.75 mm

Includes Valco ZDV
PEEK nuts and ferrules.

Standard electric actuator:
110 VAC for USA
110/230 VAC to 24 VDC power
supply for international.
Microelectric actuator:
24 VDC, with 110/230 VAC to 24 VDC
power supply.



SPECS

100 psi gas/ 250 psi liq
75°C max
PPS stator
Valcon E2 rotor

OPTIONS

- 4 and 12 positions available
- 2", 3", 4", and 6" standoffs
- Other polymeric materials are available. Consult the factory.

	6 Position		8 Position		10 Position		14 Position	
	Prod No	Price	Prod No	Price	Prod No	Price	Prod No	Price
Manual	C25Z-3186		C25Z-3188		C25Z-3180		C25Z-31814	
With pneumatic act.	C25Z-3186A		C25Z-3188A		C25Z-3180A		C25Z-31814A	
With std electric act.	C25Z-3186E		C25Z-3188E		C25Z-3180E		C25Z-31814E	
With microelectric act.	C25Z-3186EMH		C25Z-3188EMH		C25Z-3180EMH		C25Z-31814EMH	
Replacement valve	C25Z-3186D		C25Z-3188D		C25Z-3180D		C25Z-31814D	
Replacement rotor	C15-310		C15-310		C15-310		C25Z-325	
Replacement stator	C25Z-386		C25Z-388		C25Z-380		C25Z-38-14	

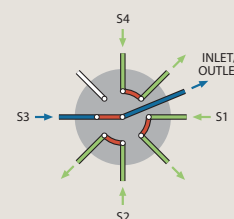


Model C25Z
10 positions
1/16" ZDV fittings

OPTIONAL FLOWPATH

Model C25ZF, the flow-through version, is similar to the C25Z but its non-selected streams continue flowing through individual outlets, instead of being dead-ended. 3, 4, 5, 6, and 7 positions are available.

Consult the factory for C25ZF prices and information.



Selectors – Low Pressure

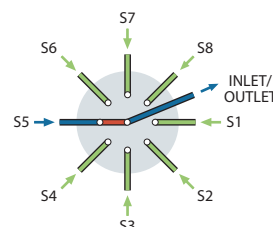
Stream selector, 1/4-28 fittings for 1/16" tubing, 0.75 mm ports (.030")

Model C25

SPECS
 100 psi gas/ 250 psi liq
 75°C max
 PPS stator
 Valcon E2 rotor

Includes multicolored
 Cheminert 1/4-28
 flangeless fittings
 for 1/16" tubing.

Standard electric actuator:
 110 VAC for USA
 110/230 VAC to 24 VDC power
 supply for international.
 Microelectric actuator:
 24 VDC, with 110/230 VAC to 24 VDC
 power supply.



Low pressure

Stream selector

1/4-28 Internal

1/16" 0.75 mm

OPTIONS

- 2", 3", 4", and 6" standoffs
- CTFE stator

	4 Position		6 Position		8 Position		10 Position	
	Prod No	Price	Prod No	Price	Prod No	Price	Prod No	Price
Manual	C25-3184		C25-3186		C25-3188		C25-3180	
With pneumatic act.	C25-3184A		C25-3186A		C25-3188A		C25-3180A	
With std electric act.	C25-3184E		C25-3186E		C25-3188E		C25-3180E	
With microelec act.	C25-3184EMH		C25-3186EMH		C25-3188EMH		C25-3180EMH	
Replacement valve	C25-3184D		C25-3186D		C25-3188D		C25-3180D	
Replacement rotor	C25-314		C25-316		C25-318		C25-310	
Replacement stator	C25-384		C25-386		C25-388		C25-380	

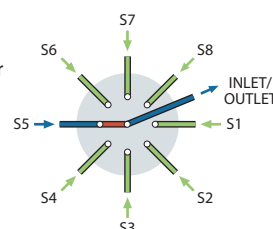
Stream selector, 1/4-28 fittings for 1/8" tubing, 1.50 mm ports (.060")

Model C25

SPECS
 100 psi gas/ 250 psi liq
 75°C max
 PPS stator
 Valcon E2 rotor

Includes multicolored
 Cheminert 1/4-28
 flangeless fittings
 for 1/8" tubing.

Standard electric actuator:
 110 VAC for USA
 110/230 VAC to 24 VDC power supply for
 international.
 Microelectric actuator:
 24 VDC, with 110/230 VAC to 24 VDC
 power supply.



Low pressure

Stream selector

1/4-28 Internal

1/8" 1.50 mm

OPTIONS

- 2", 3", 4", and 6" standoffs
- CTFE stator

	4 Position		6 Position		8 Position		10 Position	
	Prod No	Price	Prod No	Price	Prod No	Price	Prod No	Price
Manual	C25-6184		C25-6186		C25-6188		C25-6180	
With pneumatic act.	C25-6184A		C25-6186A		C25-6188A		C25-6180A	
With std electric act.	C25-6184E		C25-6186E		C25-6188E		C25-6180E	
With microelec act.	C25-6184EMH		C25-6186EMH		C25-6188EMH		C25-6180EMH	
Replacement valve	C25-6184D		C25-6186D		C25-6188D		C25-6180D	
Replacement rotor	C25-614		C25-616		C25-618		C25-610	
Replacement stator	C25-684		C25-686		C25-688		C25-680	

MORE INFORMATION

Actuators

Air page 194
 Microelectric .. 190-191
 Standard electric ... 193
 Materials
 Metals..... 254-255
 Polymers 256
 Valve rotors..... 257
 Standoff
 assemblies 205-207

OPTIONAL FLOWPATH

Model C25F is the
 flow-through version of
 C25. (See discussion on
 facing page.) 3, 4, 5, 6, and
 7 positions are available.

Consult the factory
 for C25F prices and
 information.



Model C25
 10 position
 1/4-28 fittings

CHROMalytic TECHNOlogy Pty Ltd AUSTRALIAN Distributors e-mail: sales@chromtech.net.au Tel: 03 9762 2034

Selectors – Low Pressure

Stream selector, 1/16" Valco ZDV fittings, 0.75 mm ports (.030")

Model C35Z

Low pressure

Stream selector

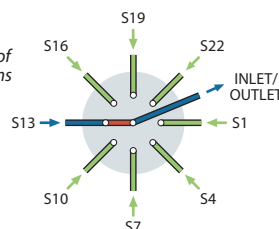
10-32 ZDV

1/16" 0.75 mm

Includes Valco ZDV
PEEK nuts and ferrules.

Available only with microelectric actuator:
24 VDC, with 110/230 VAC to 24 VDC
power supply.

(For clarity, only eight of
the twenty-four streams
are illustrated.)



SPECS

100 psi liq
50°C max
PPS stator
Valcon E2 rotor

OPTIONS

- Optional bore:
0.5 mm (.020")
1.0 mm (.040")
- 2", 3", 4", and 6"
standoffs
- Consult the factory
for optional materials.

20 Position

Prod No

Price

24 Position

Prod No

Price

26 Position

Prod No

Price

With microelectric actuator

C35Z-31820EMT

C35Z-31824EMT

C35Z-31826EMT

Replacement valve

C35Z-31820D

C35Z-31824D

C35Z-31826D

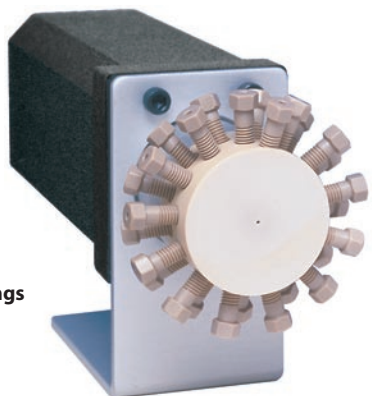
Replacement rotor

C35Z-31R20

C35Z-31R20

C35Z-31R20

Model C35Z
26 positions
1/16" ZDV fittings



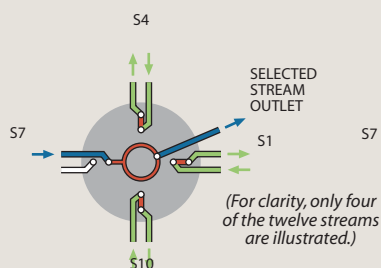
OPTIONAL FLOWPATHS

Model C35Z valves select and isolate one of 20-26 streams, with the remainder dead-ended.

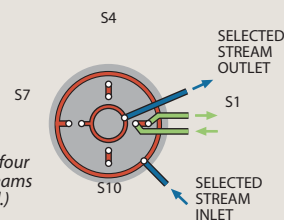
Model C35ZF, the flow-through version, is similar to the C35Z but its non-selected streams continue flowing through individual outlets. 10, 12, and 13 positions are available.

Model C35ZT, the trapping version, is similar to the C35ZF but has a second selected port. Non-selected streams continue flowing. 10, 12, and 13 positions are available.

Call for pricing and information.



Model C35ZF
schematic



Model C35ZT
schematic

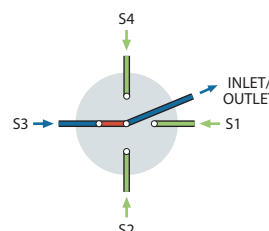
Stream selector, 1/2-20 fittings for 1/4" tubing, 4.6 mm ports (.180")

Model C45

SPECS
100 psi liq
50°C max
 PPS stator
 Valcon TF rotor

Manual version not available.
 Includes Cheminert 1/2-20 flangeless fittings for 1/4" tubing, Delrin nuts and CTFE ferrules.

Standard electric actuator:
 110 VAC for USA
 110/230 VAC to 24 VDC power supply for international.
 Microelectric actuator:
 24 VDC, with 110/230 VAC to 24 VDC power supply.



Low pressure

Stream selector

1/2-20 Internal

1/4"

4.6 mm

OPTIONS

- 2", 3", 4", and 6" standoffs
- Consult the factory for optional materials.
- 8 position selectors are available with 3 mm (.120") ports

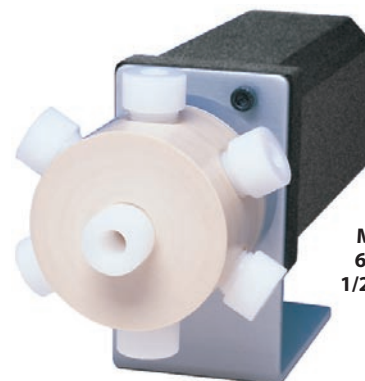
	4 Position		6 Position	
	Prod No	Price	Prod No	Price
With pneumatic actuator	C45-9784A		C45-9786A	
With std electric actuator	C45-9784E		C45-9786E	
With microelectric actuator	C45-9784EMT		C45-9786EMT	
Replacement valve	C45-9784D		C45-9786D	
Replacement rotor	C45-97R4		C45-97R6	

Fittings for C45 valves

For additional 1/2-20 fittings and adapters, see page 72.



	Prod No	Price
Delrin nut	CFL-4D	
CTFE nut	CFL-4KF	
PPS nut	CFL-4PPS	
CTFE ferrule	CFL-CB4KF-S	



Model C45
6 positions
1/2-20 fittings

MORE INFORMATION

Actuators

Air page 194

Microelectric .. 190-191

Standard electric ... 193

Materials

Metals..... 254-255

Polymers 256

Valve rotors..... 257

Standoff

assemblies 205-207