

## ***Nutech3550DS Upgrade Pack***



**[Introduction]** An upgrade pack is available now to upgrade your old 3550 into 3551 model with the 21th century state-of-the-art technologies in the pre-concentrator industry. The pack consists of a new software and a new control board to replace the two boards in the old design. The board replacement is a quick and easy process, after that all benefits of the new 3551 model are enjoyable.

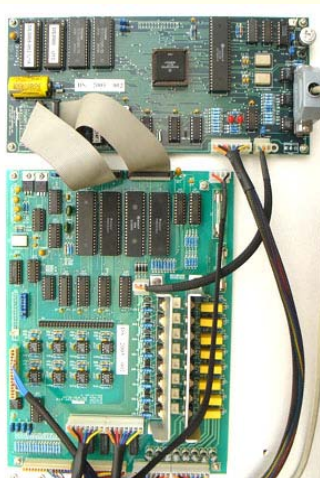


Figure 1. Old model with two control boards



Figure 2. Unplug all connectors

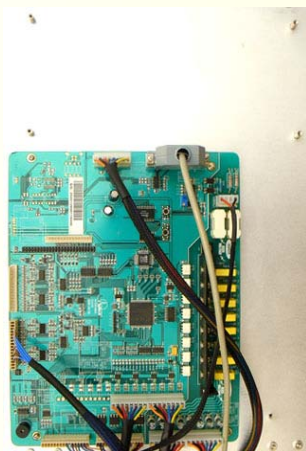


Figure 4. Plug in the connectors



Figure 3. Replace the control board

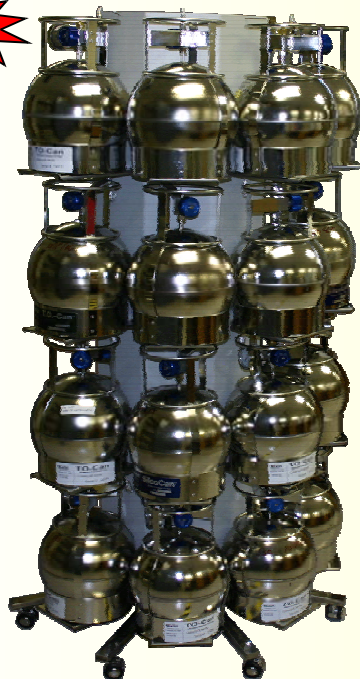
***Install the new software and ready to run !***

### ***Try It Before You Buy It***

***With a pre-approved PO, you can install this newly developed upgrade software pack free of charge for three months! If you are not completely satisfied with our product and its capabilities, return it and owe nothing. Your satisfaction is 100% guaranteed. You have NOTHING to lose.***

## ***Nutech3600 Series Autosampler***

**[Introduction]** This instrument is working with either Nutech8900 or Nutech3550 Preconcentrator, it can hold 16 positions for sample analysis automation. The proposed instrument is a vertical stand design, who saves space and is easier to add or remove canisters. The canister hold plate is made in stainless steel and can be easily flipped up.



### **Model 3602--Vertical Version Features**

- Space Saving**
- Easy add or remove canister**
- Flipping hold plate**
- Movable stand**
- Vertical canister holding**
- Light weight**

### **Model 3601--Bench Top Version Features**

- Easy Deployment on Laboratory Desk**
- LED Display**
- Light Weight**





*Always Improving technologies for air analysis*

## ***Nutech3600 Series Specifications***

**Working with either Nutech8900 or Nutech3550 Pre-concentrator**

**Two Models Available:**

Model 3602: tower design for space saving

Model 3601: suitable for desk top application

**16 Channels**

**Sample Container Handling**

All kinds of air containers: canisters, Tedlar bags and etc.

**Leak check each position with QA/QC Reports\***

**Flush each position individually\***

**16 position valve heated with accurate temperature control @  $\pm 1^{\circ}\text{C}$**

**LED display**

**Mobility for Model 3602**

**Flexible fittings to handle different canisters or Tedlar bags**

**Dimensions**

Model 3602: 90W X 149H X 45D cm<sup>3</sup>

Model 3601: 26W X 40H X 35D cm<sup>3</sup>

**Weight**

Model 3602: 15kg

Model 3601: 9.5kg

**Controlled by 3550 or 8900 software or other devices**

**Operation Environmental**

110VAC/60Hz  $\pm 10\%$  or 220VAV/50Hz  $\pm 10\%$  with max 1500W, 0 to 40°C

with < 90% RH

**Notes: \* Controlled by pre-concentrator software**



***New model can work directly with GC to handle automatic sample injection with or even without pre-concentrator!***

## ***Nutech2100 Series Canister Clean System***

**[Introduction]** The clean quality of a canister clean system is very critical to the analysis quality of TO-14 or TO-15 as well as the canister's life time. The new designed Nutech2100 oven heating system hosts all canisters into a temperature controlled heating oven and the temperature range can be from room temperature to 200°C. The sample temperature controlled heating strip heater is also an option.



**Manifold assembly with 4,6,8,12 canisters**

**Working Independently or through computer**

**Temperature controlled heating strips with protected isolation materials**

**Flexible stainless steel tube connection for canisters and manifold**





*Always Improving technologies for air analysis*

---

## ***Nutech2100 Series Specifications***

### **Canister Heating**

Automatic temperature controlled heating strip with safe protection.

Optional: oven heating system, see description in the Manifold section on the next page

### **Vacuum System**

Model 2102 -- duo pump system:

Diaphragm rough pump and molecular drag pump:

Air flow >1 liter/min, Max vacuum <50 milli-Torr

Model 2101 -- mono pump system:

Edward E2M1.5 high efficiency vacuum pump:

Air flow >25 liter/min,

Max vacuum <50 milli-Torr

### **Humidifier**

Built in pure water humidify system with water level display.

Automatically humidify the gas stream into canisters

### **Automation**

Automatic cycling clean with 1 to 100 cycles or manually clean operation.

### **Pure Gas Supplies**

Nitrogen, zero air between 0 to 50 psig

### **Operation Environment**

110 V/60Hz, (220V/50Hz optional) +/-10% with max 500W power supplies

0 to 40°C with < 90% RH

### **Dimensions**

Mainframe: 29 W X 47 H X 58 D cm<sup>3</sup>

### **Weight:**

Model 2102: 25.5 kg, Model 2101: 15kg



*Always Improving technologies for air analysis*

---

## ***Nutech2200 Dynamic Standard and Sample Dilution System***

*[Introduction] The system is necessary to make your own working calibration standards from a high concentration standard source as well as to dilute high concentration air samples. It can work independently with its built-in microcontroller. Besides, a liquid injection adaptor is also equipped for the use of making a standard from a liquid source.*



### **Features**

- Easy operation with built-in microcontroller**
- Separate standard and sample dilution channel to avoid cross contamination**
- Liquid injection adaptor for liquid source standard**
- Allow surrogate standard spike in to canister**
- Be able to pre-humidify diluent whenever necessary**



*Always Improving technologies for air analysis*

---

## ***Nutech2200 Specifications***

### **System Configuration**

Separate standard and sample channels for standard and sample dilution

### **Mass Flow Controller**

Flow rate: 5 to 200ml/min, Accuracy: <2% RSD.

Multi mass flow controller option for multi channel dilution

Flow rate option: 5ml/min to 5000ml/min

### **Liquid Injection Adaptor**

Liquid injection adaptor allows system to make standards from pure liquid sources

### **Automatic Dilution with Initial Pressure Readout**

The initial pressure of sample canister can be read and displayed, the final pressure can be set by customer. Thus the program can automatically calculate the dilution factors and finish the dilution

### **Pure Gas Supplies**

Nitrogen, zero air or all kinds of pure gases between 0 to 50 psig

### **Operation Environment**

110 V/60Hz, (220V/50Hz optional) +/- 10% with max 100W power supplies

0 to 40 °C with < 90% RH.

### **Dimensions**

33 W X 14 H X 42 D cm<sup>3</sup>

### **Weight**

Net weight 8.0 kg



*Always Improving technologies for air analysis*

---

## ***Nutech2500 Automatic Thermal Desorption System***

*[Introduction] Nutech 2500 has been designed for handling thermal desorption cartridges such as Tenax, Charcoal and/or any other thermal desorption cartridges*



### **Features**

- Two operation channels**
- Automatically temperature control**
- Handle all kinds and sizes of cartridges**
- Easy desorption flow rate control**
- Flexible heating jack**
- Easy connection outlet with canisters and Tedlar bags**





*Always Improving technologies for air analysis*

---

## ***Nutech2500 Specifications***

### **System Configuration:**

Two separate channels to handle two desorption simultaneously  
Flexible heating jack to handle different sizes or shapes of adsorbent tubes  
Configurable flow meter range to meet any flow rate requirement

### **Flow Rate Control:**

Flow rate: 0 ~ 1000ml/min.  
Desorb gases: He, H<sub>2</sub>, N<sub>2</sub> Ar or others  
Desorb gases go to canisters or Tedlar bags

### **Temperature Control:**

Room temperature to 300°C +/-2°C

### **Operation Environment**

110 V/60Hz, (220V/50Hz optional) +/-10% with max 250W power supplies  
0 to 40°C with < 90% RH.

### **Dimensions**

20 W X 40 H X 33 D cm<sup>3</sup>

### **Weight**

Net weight 11 kg



*Always Improving technologies for air analysis*

---

## ***Nutech2600 Automatic Canister Sampling System***

***[Introduction]*** Nutech 2600 has been designed to handle canister field sampling. It hosts 8 to 16 or more canisters, specific sampling event can be defined to each canister. It can also accept input signal to remote start a sampling. All sampling events are easily programmable via the keypad and LCD display.



### **Features**

- 8~16 canister with separate programmable sampling event**
- Remote Start Signal Input**
- LCD Display**
- Built-in printer**