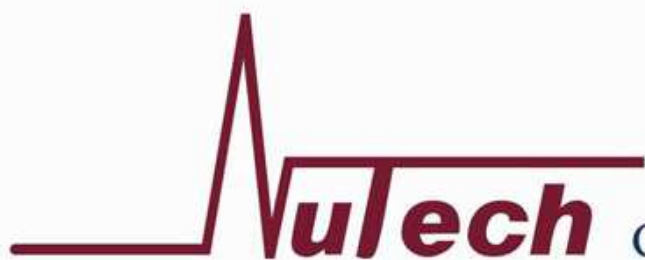


AIR VOC PRECONCENTRATOR SYSTEM

2009 Product Catalog



GD ENVIRONMENTAL SUPPLIES, INC.



GD ENVIRONMENTAL SUPPLIES, INC.

NUTECH PRODUCT PROFILE

GD Environmental Supplies, Inc. is a provider of GC and GCMS inlet systems for VOC analysis. Dr. Dai, the founder of GD Environmental, has over 30 years experience in providing technology, instrument design and providing services to the laboratory market on a global basis. We have taken the NUTECH brand that has over 100 systems in place and have improved the capabilities of both the hardware and software of those systems. We have introduced a "NEW" line of preconcentrators, auto samplers, canister cleaning systems, standard and sample dilution systems. We provide a thermal desorber, automatic canister sampling system and headspace autosampler. GD Environmental has a staff based in Dallas, Texas to provide technical support, application support and offers service contracts to all their customers.



GD Environmental has entered into an exclusive sales and marketing agreement with New Star Environmental who will provide all the sales support, such as supporting local sales representatives, distributors, visiting US EPA, OSHA, Homeland Security Agency, all state EPA offices and regional EPA offices,

contract laboratories and all other laboratories. Sam Llanasa and Rob Ford have over 35 years experience and former key managers at Thermo Electron, both managed NUTECH when it was part of Graseby.

We look forward to visiting you and hopefully doing business in the future.

NUTECH PRODUCTS LINE:



Headquarters: GD Environmental Supplies, Inc.
651 N. Plano Rd. #429, Richardson TX 75081
E-mail: drdai@gdair.com
Website: www.nutechins.com, T: 972 480 8908; F: 972 480 8308

2

Sales Office: New Star Environmental, Inc.
3293 Ashburton Chase NE, Roswell GA 30075
E-mail: Sales@NewStarEnvironmental.com
Website: www.NewStarEnvironmental.com, T: 770 998 0296; F: 770 998 9794



GD ENVIRONMENTAL SUPPLIES, INC.

NUTECH 8900 PRECONCENTRATOR

This preconcentrator has all the most advanced hardware and software than any other manufacturer of VOC preconcentrators in the market and many unique features that separate us from the competition for the analysis of EPA: TO-14 and TO-15 compounds. The advanced temperature control is one example how we can control variation under $\pm 2^\circ\text{C}$, assuring stable and accurate analysis.

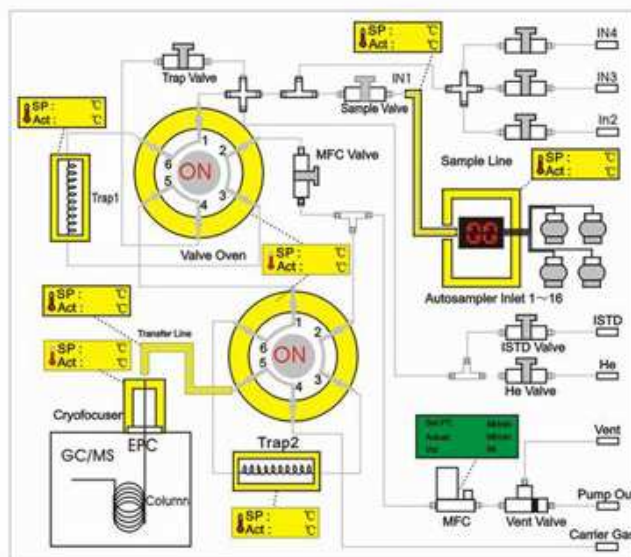


HARDWARE FEATURES

- High sensitivity and wide detection range
- Three stage module: two cryogenic traps and one cryofocuser
- High accuracy and repeatability
- Friendly sample handling
- Three additional sample inlets
- USB interface and user friendly software
- QA/QC, leak check, sequence and method table print outs

SOFTWARE FEATURES

- Built to EPA TO-14, TO-15 methods
- Ability to configure/change methods
- Bypass trap 1 and/or bypass cryofocuser without hardware changes
- Intuitive gas path graphic display
- Adjust sequence control during run
- Comprehensive QA/QC report
- Windows 2000, XP and Vista compatible



Headquarters: GD Environmental Supplies, Inc.
651 N. Plano Rd. #429, Richardson TX 75081
E-mail: drdal@gdair.com
Website: www.nutechins.com, T: 972 480 8908; F: 972 480 8308

3

Sales Office: New Star Environmental, Inc.
3293 Ashburton Chase NE, Roswell GA 30075
E-mail: Sales@NewStarEnvironmental.com
Website: www.NewStarEnvironmental.com, T: 770 998 0296; F: 770 998 9794



GD ENVIRONMENTAL SUPPLIES, INC.

NUTECH 8900 PRECONCENTRATOR

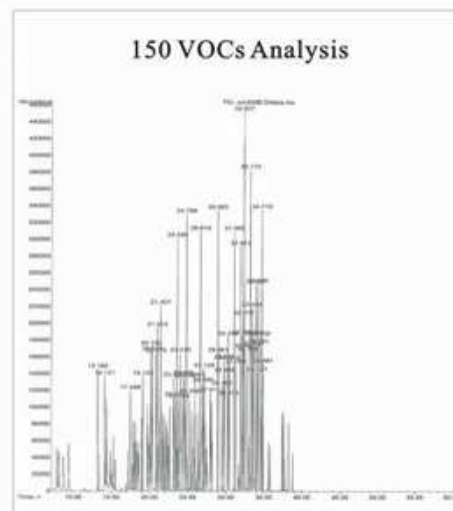
UNIQUE FEATURES

HARDWARE:

- Switch power supply
- Advanced temperature control
- Compact PCB board

SOFTWARE:

- QA/QC print out end-user friendly
- QA/QC reports listed in a rolling calendar
- Dynamic gas flow display and flow direction for all sample paths



NUTECH 8900 SPECIFICATIONS



- Three stage cryogenic traps
- Glass bead: -190°C to 250°C
- Tenax multimedia trap: -190°C to 250°C
- Cryofocuser: -190°C to 250°C
- Sensitivity and detection range
- 0.1ppbv to percent level for most VOCs
- Concentration ratio: >1000:1
- Accuracy and repeatability
- Within 10% RSD for most VOC compounds with a sample
- Loading range of 4-1000ml
- Sample handling
- All tubes are silica coated stainless steel
- 4-2000ml loading range with 0-100 relative humidity
- MFC operating range 5-120ml/min with +/-2% accuracy with an optional customized flow range
- Temperature control: +/-2°C accuracy
- Gas inlets: independent internal standard inlet and 3 additional sample inlets 16 sample inlets with optional autosampler
- Operating environment: 110v/60hz or 220v/50hz with max 1500w, 0-40°C/90% RH operating range.
- Dimensions: 14"(W)×20"(H)×20"(D)
- Weight: 65 lbs.

Headquarters: GD Environmental Supplies, Inc.
651 N. Plano Rd. #429, Richardson TX 75081
E-mail: drdai@gdair.com
Website: www.nutechins.com, T: 972 480 8908; F: 972 480 8308

4

Sales Office: New Star Environmental, Inc.
3293 Ashburton Chase NE, Roswell GA 30075
E-mail: Sales@NewStarEnvironmental.com
Website: www.NewStarEnvironmental.com, T: 770 998 0296; F: 770 998 9794



GD ENVIRONMENTAL SUPPLIES, INC.

NUTECH 3602 SERIES AUTOSAMPLER

This instrument works with either the Nutech 8900 or Nutech 3551, it holds up to 16 canisters (all sizes) and Tedlar™ bags. The autosampler is a vertical design which saves valuable laboratory space and makes it easier to add and remove canisters. The canister hold plate is made in stainless steel and can be flipped up when not in use.



FEATURES

- Space saving
- Easy to add or remove canisters
- Automated analysis of 16 Silonite® or SUMMA passivated canisters in accordance with EPA methods TO-14 and TO-15
- Back-flushing of each line after analysis under software control
- Automatic leak-check prior to opening canister valves
- Interfaces with 8900/3551 software

SPECIFICATIONS

- Works with 8900 or 3551 Preconcentrator
- Two models available:
 - Model 3602 tower design
 - Model 3603 tower design (smaller footprint)
- 16 channels
- Leak check each position with QA/QC reports (controlled by preconcentrator software)
- Flush each position individually (controlled by preconcentrator software)
- 16 position valve heated with temperature control @ $\pm 2^{\circ}\text{C}$
- Dimensions:
 - Model 3602: 35" (W) \times 59" (H) \times 18" (D)
 - Model 3603: 30" (W) \times 59" (H) \times 15" (D)
- Weight:
 - Model 3602: 33 lbs.
 - Model 3603: 29 lbs.



Headquarters: GD Environmental Supplies, Inc.
651 N. Plano Rd. #429, Richardson TX 75081
E-mail: drdai@gdair.com
Website: www.nutechins.com, T: 972 480 8908; F: 972 480 8308

5

Sales Office: New Star Environmental, Inc.
3293 Ashburton Chase NE, Roswell GA 30075
E-mail: Sales@NewStarEnvironmental.com
Website: www.NewStarEnvironmental.com, T: 770 998 0296; F: 770 998 9794



GD ENVIRONMENTAL SUPPLIES, INC.

NUTECH 3606 AUTOSAMPLER WITH LOOP INJECTION

This instrument works in conjunction with the GC or GC/GCMS or independently as an automatic loop injection inlet. The 3606 holds up to 22 canisters (all sizes) and Tedlar™ bags. With the loop injection valve installed, the autosampler can also be attached directly to a GC or GCMS without the need of the 8900 Preconcentrator when analyzing concentrations exceeding 0.1 ppm. The autosampler is a vertical design which saves valuable laboratory space and makes it easier to add and remove canisters. The canister hold plate is made of stainless steel and can be flipped up when not in use.

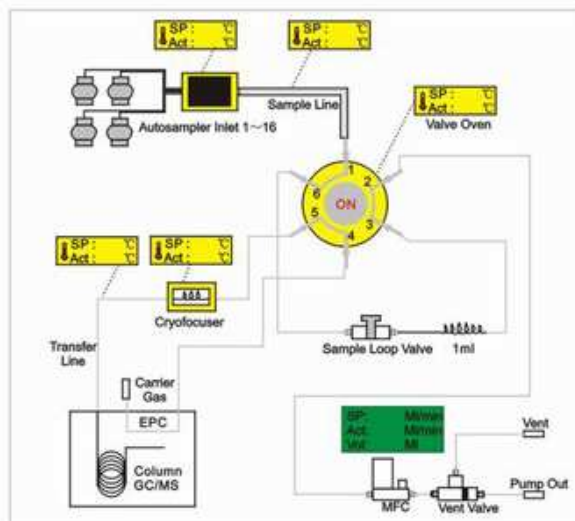


FEATURES

- Space saving
- Easy to add or remove canisters
- Flexability to perform either automated analysis of 22 Silonite® or SUMMA passivated canisters in accordance with EPA methods TO-14 and TO-15 with the Model 8900 Preconcentrator or by a direct loop injection to the GC or GC/GCMS.
- Back-flushing of each line after analysis under software control
- Automatic leak-check prior to opening canister valves

SPECIFICATIONS

- Works with with any commercial GC or GC/GCMS as well as Nutech 8900 or Nutech 3551 Preconcentrator
- 22 channels
- Leak check each position with QA/QC reports (controlled by preconcentrator software)
- Flush each position individually (controlled by preconcentrator software)
- Valve heated with temperature control @ +/-2°C
- Option: split injection and cryofocuser
- Dimensions: 35"(W) × 59"(H) × 18"(D)
- Weight: 35 lbs.



Headquarters: GD Environmental Supplies, Inc.
651 N. Plano Rd. #429, Richardson TX 75081
E-mail: drdal@gdair.com
Website: www.nutechins.com, T: 972 480 8908; F: 972 480 8308

6

Sales Office: New Star Environmental, Inc.
3293 Ashburton Chase NE, Roswell GA 30075
E-mail: Sales@NewStarEnvironmental.com
Website: www.NewStarEnvironmental.com, T: 770 998 0296; F: 770 998 9794



GD ENVIRONMENTAL SUPPLIES, INC.

NUTECH 2100 SERIES CANISTER CLEANING SYSTEM

The cleanliness of the canister is very critical to the overall accuracy of the detection of TO-14 and TO-15 compounds in the sample. Canisters are reused by evacuating and refilling with nitrogen or zero air multiple times to assure previous VOCs are completely eliminated. The Nutech 2100 oven heating system maintains the canisters in a controlled temperature range upwards to 200°C. Sample temperature controlled heating strips are available.



FEATURES

- Embedded system with touch screen LCD panel enables easy operation
- Manifold assembly with 4, 6, 8, 12 canisters
- Operates independently without computer
- Temperature controlled heating strips
- Flexible stainless steel tube connection for canisters and manifold

SPECIFICATIONS

- Canister heating
 - Automatic temperature control
- Vacuum system
 - Model 2100 with two pumps (specify)
 - Model 2100 with one pump (specify)
- Humidifier
 - Built-in pure water humidifier system with water level display
 - Automatically humidifies the gas stream into canisters
- Automation
 - Can programmable cleaning cycles from 1 to 99 cycles or clean manually
- Pure gas supply
 - Nitrogen, zero air between 0 to 50 psig
- Operation environment
 - 110 V/60Hz or 220V/50Hz with max. 1500W, 0-40°C/90%RH operating range



Headquarters: GD Environmental Supplies, Inc.
651 N. Plano Rd. #429, Richardson TX 75081
E-mail: drdai@gdair.com
Website: www.nutechins.com, T: 972 480 8908; F: 972 480 8308

7

Sales Office: New Star Environmental, Inc.
3293 Ashburton Chase NE, Roswell GA 30075
E-mail: Sales@NewStarEnvironmental.com
Website: www.NewStarEnvironmental.com, T: 770 998 0296; F: 770 998 9794



NUTECH 2200 DYNAMIC STANDARD AND SAMPLE DILUTION SYSTEM

The Nutech 2200 system was designed for the end-user to either make his calibration standards from a high concentration source as well as to pressurize the sample canister, which is under vacuum, to an acceptable pressure and calculate the dilution factor. The dilutor prepares ppb level standards from ppm level certified cylinders. The dilutor can be expanded to accommodate 6 mass flow controllers blend cylinder standards with a diluent gas under equilibrium conditions for superior reproducibility. The Nutech 2200 has two separate channels, one for the standard and a second channel for the sample dilution.



FEATURES

- Easy operation with built-in microcontroller
- Separate standard and sample dilution channel to avoid cross contamination
- Liquid injection adaptor for liquid source standard
- The initial pressure of sample canister can be read and displayed, the final pressure can be set by end-user, program can automatically calculate the dilution factors and finish the dilution

OPTIONS

- Prepare standards from liquids
- Heated oven for canisters
- Humidified air inlet
- Multiple standard inlet configuration

SPECIFICATIONS

- System configuration
 - Separate standard and sample channels for standard and sample dilution
- Mass flow controller
 - Flow rate: 5 to 100ml/min, accuracy: <2% RSD
 - Multi mass flow controller for multi channel dilution
 - Flow rate option: 5ml/min To 1000ml/min
- Operating environment
 - 110 V/60Hz or 220 V/50Hz with max. 100w, 0-40°C, 90%RH operating range
- Dimensions
 - Model 2200A (compact): 13"(W) × 5.5"(H) × 17"(D)
 - Model 2201A: 11"(W) × 17"(H) × 12"(D)
- Weight
 - Model 2200A: 18 lbs.
 - Model 2201A: 17 lbs.



Headquarters: GD Environmental Supplies, Inc.
651 N. Plano Rd. #429, Richardson TX 75081
E-mail: drdai@gdair.com
Website: www.nutechins.com, T: 972 480 8908; F: 972 480 8308

Sales Office: New Star Environmental, Inc.
3293 Ashburton Chase NE, Roswell GA 30075
E-mail: Sales@NewStarEnvironmental.com
Website: www.NewStarEnvironmental.com, T: 770 998 0296; F: 770 998 9794



GD ENVIRONMENTAL SUPPLIES, INC.

NUTECH 2502 AUTOMATIC THERMAL DESORPTION SYSTEM

The Nutech 2502 system automatically analyzes VOCs following EPA methods TO-17, TO-1 and TO-2, the system handles tenax, charcoal, molecular sieve cartridges and other types of adsorbent tube cartridges. The Nutech 2502 works with all commercial GC and GC/GC/MS. Our system has a built in cryofocuser, wide range temperature control, and user-friendly software.

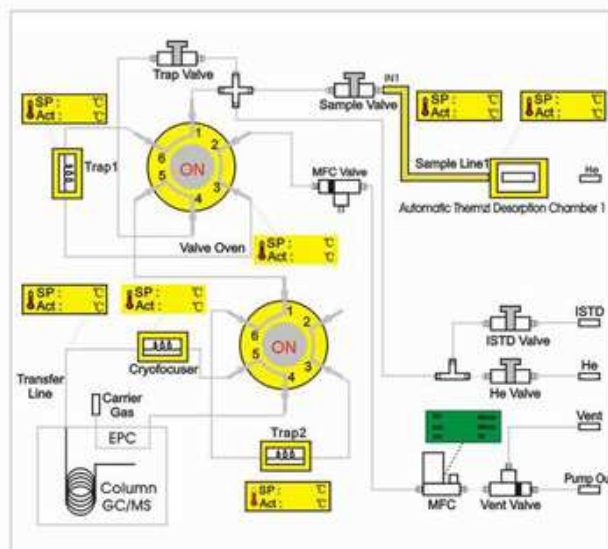


FEATURES

- Performs EPA methods: TO-17, TO-1 and TO-2
- Handles all types of cartridges and adsorbent tubes
- Compatible with all GC/GCMS
- Built-in cryofocuser
- Friendly software with gas flow direction
- Heated transfer line connects directly with column

SPECIFICATIONS

- Thermal desorption temperature range: 20°C - 300°C
- Cartridge size: 1/4" width, 3.5" length
- Thermal desorption media: He, Air or N₂
- Thermal desorption flow: 5 to 120ml/min
- Option flow
 - Software: compatible with Windows® 2000, XP and Vista
- Power: 110 V/60Hz or 220 V/50Hz with max. 1500W, -5°C to 50°C/90%RH
- Sensitivity: 0.2ppb or lower for most compounds
- Size: 22" (W) × 25" (H) × 30" (D)
- Weight: 62 lbs.



Headquarters: GD Environmental Supplies, Inc.
651 N. Plano Rd. #429, Richardson TX 75081
E-mail: drdal@gdair.com
Website: www.nutechins.com, T: 972 480 8908; F: 972 480 8308

9

Sales Office: New Star Environmental, Inc.
3293 Ashburton Chase NE, Roswell GA 30075
E-mail: Sales@NewStarEnvironmental.com
Website: www.NewStarEnvironmental.com, T: 770 998 0296; F: 770 998 9794



GD ENVIRONMENTAL SUPPLIES, INC.

NUTECH 2505 PROGRAMMABLE CARTRIDGE AUTO CLEANER

The Nutech 2505 was designed to follow the protocol to clean and condition cartridges according to EPA methods TO-17, TO-1, TO-2 and other thermal desorption tubes. The Nutech 2505 cleans and conditions thermal desorption cartridges at different temperature ranges, handles tenax, charcoal, molecular sieve SS cartridges and many other types. The unit is completely programmable, user friendly software allowing technician to walk away while system performs cleaning cycle.



FEATURES

- Automatically cleans and conditions up to 16 cartridges at different temperature ranges
- Constant flow control
- Programmable flow rates
- Programmable temperature settings
- Eight positions with an option to 16 positions
- Automatic temperature control
- Accepts most types of cartridges
- Easy to clean

SPECIFICATION

- Flow rate setting: 5 to 120ml/min or end-user specified range
- Cartridge size: 1/4" width 3.5" length or customer designed size
- Temperature range: 20°C to 400°C
- Option: individual tube clean/group tube clean program
- Option: 24v DC vacuum pump for vacuum cleaning
- Display: 3" LCD
- Power: 110V/60Hz or 220V/50Hz with max. 110W, -5°C to 50°C
- Size: 12"(W) × 14"(H) × 16"(D)



Headquarters: GD Environmental Supplies, Inc.
651 N. Plano Rd. #429, Richardson TX 75081
E-mail: drdai@gdair.com
Website: www.nutechins.com, T: 972 480 8908; F: 972 480 8308

10

Sales Office: New Star Environmental, Inc.
3293 Ashburton Chase NE, Roswell GA 30075
E-mail: Sales@NewStarEnvironmental.com
Website: www.NewStarEnvironmental.com, T: 770 998 0296; F: 770 998 9794



GD ENVIRONMENTAL SUPPLIES, INC.

NUTECH 2600 AUTOMATIC CANISTER SAMPLING SYSTEM

The Nutech 2600 delivers a tremendous level of instrument control and an extensive compound recovery range. The system can be scaled to meet your application needs; can operate as a single channel, or be expanded into a dual channel, 16 positions canister sampler. We have built-in Windows Touch buttons, and can record/retrieve/print sample history in real time, including start/stop time. Schedule sampling times or initiate sampling events locally or using feedback from other real-time monitors. We leak check and flush to maintain low blank levels and improve sample integrity. All sampling events are easily programmed via the keypad and LCD display.



FEATURES

- Accept TTI signal from any remote device
- 8 canister positions with separate programmable sampling event
- LCD display
- Built-in printer
- Passive or active sample inlet with built-in 24V DC pump
- Independent flow control for each channel and position
- Remote start sampling
- Time integrated sampling
- Sample flow controlled by MFC

SPECIFICATIONS

- Mass flow controller
Flow rate: 5 to 100ml/min, accuracy: <2% RSD
- Operation environment
110 V/60Hz or 220 V/60Hz with max. 250W, 0-40°C/90%RH
- Dimensions
8"(W)×16"(H)×13"(D)
- Weight
24 lbs.



Headquarters: GD Environmental Supplies, Inc.
651 N. Plano Rd. #429, Richardson TX 75081
E-mail: drdai@gdair.com
Website: www.nutechins.com, T: 972 480 8908; F: 972 480 8308

11

Sales Office: New Star Environmental, Inc.
3293 Ashburton Chase NE, Roswell GA 30075
E-mail: Sales@NewStarEnvironmental.com
Website: www.NewStarEnvironmental.com, T: 770 998 0296; F: 770 998 9794



GD ENVIRONMENTAL SUPPLIES, INC.

NUTECH 2602 PROGRAMMABLE CARTRIDGE AUTO SAMPLER

The Nutech 2602 was designed to follow the protocol of EPA Method TO-17, TO-1, TO-2, TO-11 and other thermal desorption techniques. The Nutech 2602 has the ability to program up to eight sample events and accept a TTI signal, can program flow rates for 1, 2, 4, 6, 8, 12, 24, 36, 48 hours. The system has an efficient pump that assures constant flow rates, handles Tenax SS cartridges, charcoal cartridges, molecular sieve cartridges and carbonyl sampling cartridges. The 2602 has first generation electronic control, friendly software and a large LCD display.



FEATURES

- Program 8 events in a 7 day period with TTI signal accept capability
- Adjustable flow rate
- Programmable time duration
- Stable constant flow
- Handles Tenax SS cartridges charcoal cartridges, molecular sieve cartridges
- Accommodates carbonyl sampling cartridges
- Friendly software
- Flexible cartridge connection

SPECIFICATIONS

- Cartridge size: 1/4" width 3.5" length carbonyl sampling cartridge
- Flow rate: adjustable 5 to 120ml/min
- Event setting: 7 day with programmable start and stop
- Sample pump: built in 24 V DC diaphragm pump
- Display: 3" LCD
- Power: 110 V/60Hz or 220 V/50Hz with max. 110W, -5°C to 50°C
- Size: 12"(W)×14"(H)×16"(D)
- Weight: 10 lbs.



Headquarters: GD Environmental Supplies, Inc.
651 N. Plano Rd. #429, Richardson TX 75081
E-mail: drdai@gdair.com
Website: www.nutechins.com, T: 972 480 8908; F: 972 480 8308

12

Sales Office: New Star Environmental, Inc.
3293 Ashburton Chase NE, Roswell GA 30075
E-mail: Sales@NewStarEnvironmental.com
Website: www.NewStarEnvironmental.com, T: 770 998 0296; F: 770 998 9794



GD ENVIRONMENTAL SUPPLIES, INC.

NUTECH 2701 PROGRAMMABLE FIELD CANISTER TIMER

The Nutech 2701 Canister Sampling Timer is designed for canister field sampling. The unit can be set for either time integration or grab samples. The timer can be easily programmed for 8 events in a 7-day period with start and stop times and works with any commercial flow controller.



APPLICATIONS

- Emergency response
- Homeland security
- Indoor air quality
- Hazardous waste sites
- EPA air toxic networks

FEATURES

- Latch valve design
- Light in weight
- Battery life can last for 3 months with a single charge
- Attaches easily to any commercial canister
- LCD display
- Water and weatherproof for field use

SPECIFICATIONS

- Meets sampling protocols: EPA Methods TO-14 and TO-15
- Battery: Rechargeable lithium ion with 2500 mAh
- Sample Path: All silica coated SS tubing
- Fittings: Swagelok
- Display: 3" LCD
- Working temperature range: -30°C to 50°C
- Dimensions: 4"(W) × 6"(H) × 3"(D)
- Weight: < 1 lb



Headquarters: GD Environmental Supplies, Inc.
651 N. Plano Rd. #429, Richardson TX 75081
E-mail: drdal@gdair.com
Website: www.nutechins.com, T: 972 480 8908; F: 972 480 8308

13

Sales Office: New Star Environmental, Inc.
3293 Ashburton Chase NE, Roswell GA 30075
E-mail: Sales@NewStarEnvironmental.com
Website: www.NewStarEnvironmental.com, T: 770 998 0296; F: 770 998 9794



GD ENVIRONMENTAL SUPPLIES, INC.

NUTECH 2702 DIGITAL PROGRAMMABLE FIELD CANISTER SAMPLER

The Nutech 2702 Canister Sampler is designed for canister field sampling. The unit can be set for either time integration or grab samples. The Sampler can be easily programmed for 8 events in a 7-day period with start and stop times and is equipped with an adjustable digital flow control. The unit attaches easily to any commercial canister.



APPLICATIONS

- Emergency response
- Homeland security
- Indoor air quality
- Hazardous waste sites
- EPA air toxic networks

FEATURES

- Combines flow control and sample timer in one unit
- Adjustable flow settings from 2 to 120 ml/min
- Electronic MFC
- State-of-the-art digital flow control
- Battery life lasts for 48 hours with continuous operation
- Attaches easily to any commercial canister
- LCD display
- Waterproof for use in the field

SPECIFICATIONS

- Meets sampling protocols: EPA methods TO-14 and TO-15
- Battery: Rechargeable lithium ion with 6500 mAh
- MFC: Electronic with digital display +/-5% accuracy
- Sample path: All silica coated SS tubing
- Fittings: Swagelok
- Display: 3" LCD
- Working temperature range: -30°C to 50°C
- Dimensions: 4" (W) × 8" (H) × 3" (D)
- Weight: 2 lbs



Headquarters: GD Environmental Supplies, Inc.
651 N. Plano Rd. #429, Richardson TX 75081
E-mail: drdal@gdair.com
Website: www.nutechins.com, T: 972 480 8908; F: 972 480 8308

14

Sales Office: New Star Environmental, Inc.
3293 Ashburton Chase NE, Roswell GA 30075
E-mail: Sales@NewStarEnvironmental.com
Website: www.NewStarEnvironmental.com, T: 770 998 0296; F: 770 998 9794



GD ENVIRONMENTAL SUPPLIES, INC.

NUTECH 2800 HEADSPACE AUTOSAMPLER

The Nutech 2800 Headspace Autosampler is designed for handling large volume headspace samples from a liquid or solid matrix. The system is used with the Nutech 8900 for handling large volume headspace or can directly introduce the headspace gases to any GC or GC/MS inlet. The Nutech 2800 Headspace Autosampler can be configured as a single inlet or it can utilize multi-inlets.



APPLICATIONS

- Emergency response
- Homeland security
- Food industry and fragrance analysis
- Hazardous waste sites
- EPA air toxic networks

FEATURES

- Large volume headspace up to 500 ml volume
- Temperature controlled transfer line
- Easy sample loading
- Micro computer control
- Both AC and DC power supply
- LCD display
- Carrying case for field use

SPECIFICATIONS

- 24V DC or 110/220V AC
- Headspace volume: 500 ml
- Water sample vial volume: 44 ml US standard vial
- Headspace temperature: Room temperature to 90°C +/- 3°C
- Heated sample line: 1/8" SS from headspace to sample outlet; 15°C to 90°C
- Sample out: 1/8" Swagelok union
- Set point headspace and sample line temperature: Room temperature to 90°C
- Solenoid valve control sample injecting to GC
- Equilibrium time: 1 to 300 minutes with audible when equilibrium reached
- Portable case with handle (optional)
- Maximum time to reach set point temperature: <30 minutes
- Total power: 70W
- Dimensions and weight: 8" (W) × 16" (H) × 13" (D); 15 lbs



Headquarters: GD Environmental Supplies, Inc.
651 N. Plano Rd. #429, Richardson TX 75081
E-mail: drdal@gdair.com
Website: www.nutechins.com, T: 972 480 8908; F: 972 480 8308

15

Sales Office: New Star Environmental, Inc.
3293 Ashburton Chase NE, Roswell GA 30075
E-mail: Sales@NewStarEnvironmental.com
Website: www.NewStarEnvironmental.com, T: 770 998 0296; F: 770 998 9794

SAMPLING CANISTERS

Canisters are used for the collection of TO-14 and TO-15 compounds, as well as all other air samples. The canisters are the most important part of the whole air VOC analysis. We support two types of canisters: the Silco Can™ Air Monitoring Canisters and the TO-Can™ Air Monitoring Canisters (SUMMA® equivalent).



FEATURES OF SilcoCan™ CANISTERS

- Reliable analyte recovery even after 14 days storage
- Wide selection of valves
- Newest surface technology
- Effectively store low level sulfur compounds (1-20 ppb)
- Wide range of sizes: 0.4, 1, 3, 6 and 15 liters
- Serial controlled label
- Enhanced valve and canister bracket

FEATURES OF TO-CAN™ CANISTERS

- SUMMA® equivalent
- Proprietary electropolish surface
- High quality, metal-to-metal seal
- 2-port or 3-port valve available
- Valve with SS diaphragms
- Unique holder attaches handle and base without welds
- All metal flow paths
- Wide range of sizes: 0.4, 1, 3, 6 and 15 liters
- Withstands temperatures up to 300°C
- Rugged performance in the field

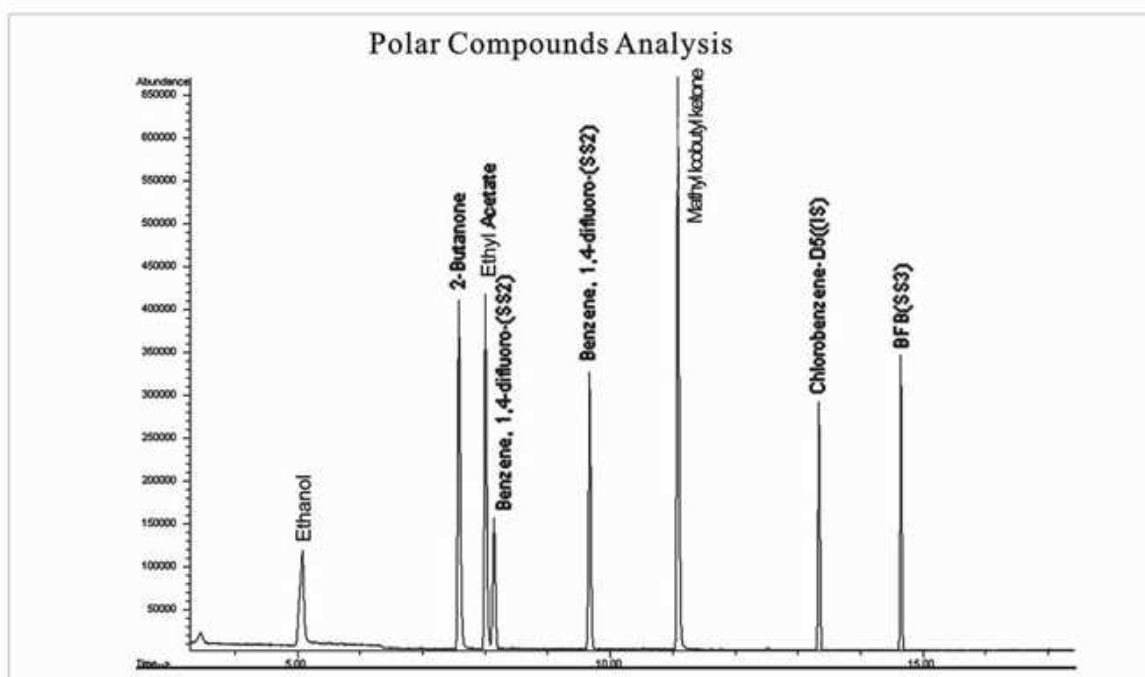
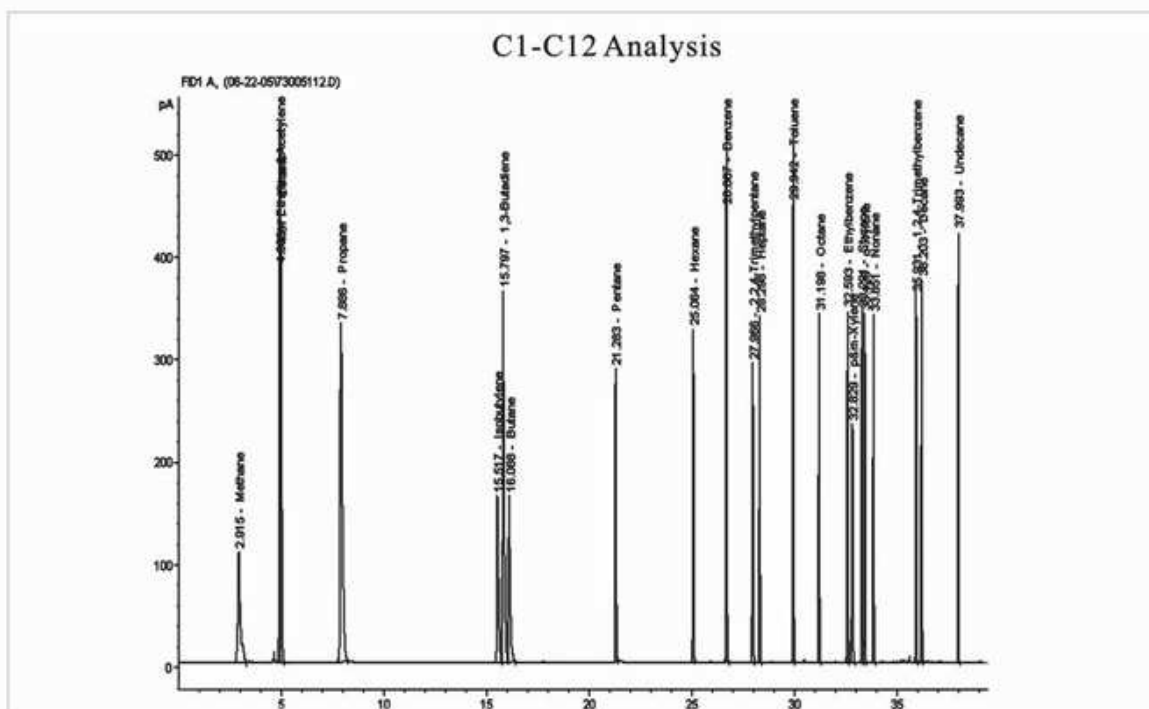


Headquarters: GD Environmental Supplies, Inc.
651 N. Plano Rd. #429, Richardson TX 75081
E-mail: drdal@gdair.com
Website: www.nutechins.com, T: 972 480 8908; F: 972 480 8308

16

Sales Office: New Star Environmental, Inc.
3293 Ashburton Chase NE, Roswell GA 30075
E-mail: Sales@NewStarEnvironmental.com
Website: www.NewStarEnvironmental.com, T: 770 998 0296; F: 770 998 9794

NUTECH 3551, 8900 APPLICATION



Headquarters: GD Environmental Supplies, Inc.
651 N. Plano Rd. #429, Richardson TX 75081
E-mail: drdal@gdair.com
Website: www.nutechins.com, T: 972 480 8908; F: 972 480 8308

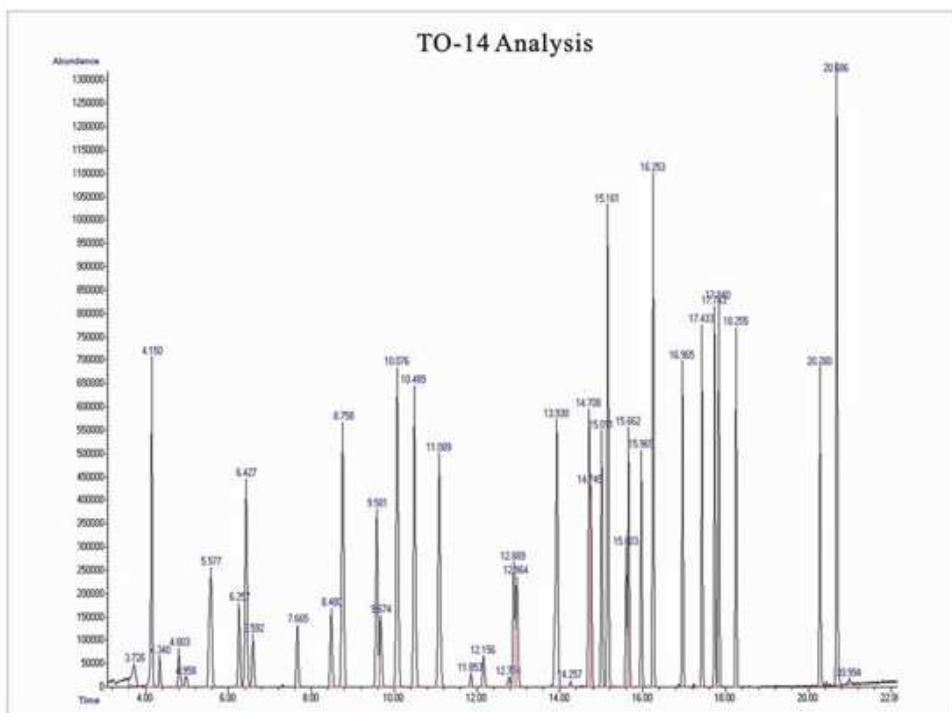
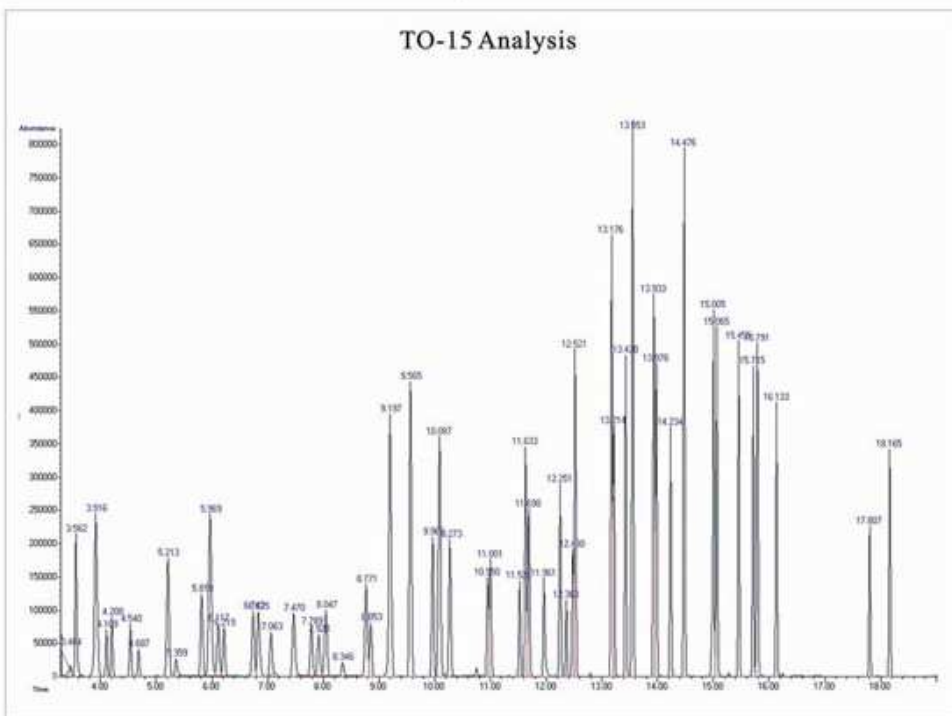
17

Sales Office: New Star Environmental, Inc.
3293 Ashburton Chase NE, Roswell GA 30075
E-mail: Sales@NewStarEnvironmental.com
Website: www.NewStarEnvironmental.com, T: 770 998 0296; F: 770 998 9794



GD ENVIRONMENTAL SUPPLIES, INC.

NUTECH 3551, 8900 APPLICATION



Headquarters: GD Environmental Supplies, Inc.
651 N. Plano Rd. #429, Richardson TX 75081
E-mail: drdal@gdair.com
Website: www.nutechins.com, T: 972 480 8908; F: 972 480 8308

18

Sales Office: New Star Environmental, Inc.
3293 Ashburton Chase NE, Roswell GA 30075
E-mail: Sales@NewStarEnvironmental.com
Website: www.NewStarEnvironmental.com, T: 770 998 0296; F: 770 998 9794



NUTECH 8900 PERFORMANCE - REPEATABILITY

Instruments: Nutech 8900DS Preconcentrator with Agilent 6890/5973 GC/MS

Standard Gas: EPA TO-14, 50 ppb

Experiment Conditions: Run 7 replicate of TO-14 standard using 4 ml sample volume of standard gas at 50 ml/min flow rate. The results are shown in the following table:

Target Compounds	AVG	SD	RPD%
Dichlorodifluoromethane	0.306	0.012	4.14
Chloromethane	0.105	0.008	7.78
Dichlorotetrafluoroethane	0.306	0.012	4.14
Ethene, chloro-	0.054	0.006	12.63
Methane, bromo-	0.028	0.008	28.50
Ethene, 1,1-dichloro	0.148	0.004	2.83
Ethane, 1,1,2-trichloro-1,	0.211	0.010	5.06
Methylene Chloride	0.063	0.006	10.83
Ethane, 1,1-dichloro-	0.158	0.007	4.77
Ethene, 1,2-dichloro-, (Z)	0.083	0.005	6.05
Bromochloromethane(SS1)	0.368	0.004	1.09
Chloroform	0.256	0.006	2.60
Ethane, 1,1,1-trichloro-	0.337	0.013	4.12
Ethane, 1,2-dichloro-	0.188	0.013	7.08
Benzene	0.218	0.013	6.13
Carbon tetrachloride	0.326	0.019	6.05
Benzene, 1,4-difluoro(SS2)	1.462	0.065	4.44
Trichloroethylene	0.115	0.023	19.93
Cis-1,3-dichloropropene	0.059	0.006	11.65
Toluene	0.294	0.013	4.46
Ethane, 1,1,2-trichloro-	0.083	0.006	7.87
Tetrachloroethylene	0.192	0.015	8.11
1,2-Dibromoethane	0.098	0.016	6.58
Benzene, chloro-	0.197	0.016	8.12
Ethylbenzene	0.539	0.057	10.59
Xylenes(p+m)	0.701	0.052	7.50
Styrene	0.094	0.007	7.82
O-Xylene	0.309	0.011	3.71
Ethane, 1,1,2,2-tetrachloro	0.111	0.007	7.15
Benzene, 1-bromo-4-fluoro-(SS3)	0.746	0.059	8.01
Benzene, 1,2,3-trimethyl-	0.208	0.011	5.32
Benzene, 1,2,4-trimethyl-	0.206	0.012	6.08
Benzene, 1,2-dichloro-	0.129	0.005	4.19
Benzene, 1,3-dichloro-	0.128	0.007	5.71
Benzene, 1,4-dichloro-	0.101	0.011	11.19

Headquarters: GD Environmental Supplies, Inc.
651 N. Plano Rd. #429, Richardson TX 75081
E-mail: drdai@gdair.com
Website: www.nutechins.com, T: 972 480 8908; F: 972 480 8308

Sales Office: New Star Environmental, Inc.
3293 Ashburton Chase NE, Roswell GA 30075
E-mail: Sales@NewStarEnvironmental.com
Website: www.NewStarEnvironmental.com, T: 770 998 0296; F: 770 998 9794



NUTECH 3551 PERFORMANCE - REPEATABILITY

Instruments: Nutech 3551DS Preconcentrator with Agilent 6890/5973 GC/MS

Standard Gas: EPA TO-14, 50 ppb

Experiment Conditions: Run 7 replicate independent experiments of TO-14 standard analysis using 100 ml sample volume of standard gas at 100 ml/min flow rate. The results are shown in the following table:

Target Compounds	AVG	SD	RPD%
Dichlorodifluoromethane	0.305	0.0081	2.66
Chloromethane	0.125	0.0028	2.23
Dichlorotetrafluoroethane	0.305	0.0081	2.66
Ethene, chloro-	0.074	0.002	2.70
Methane, bromo-	0.060	0.0023	3.87
Chloroethane	0.037	0.0012	3.10
Trichloromonofluoromethane	0.367	0.0083	2.27
Ethene, 1,1-dichloro	0.154	0.0053	3.42
Ethane, 1,1,2-trichloro	0.215	0.0075	3.45
Methylene chloride	0.069	0.0027	3.82
Ethane, 1,1-dichloro-	0.177	0.0027	1.51
Ethene, 1,2-dichloro-, (Z)	0.110	0.0022	1.98
Bromochloromethane(SS1)	0.419	0.0069	1.65
Chloroform	0.272	0.0046	1.69
Ethane, 1,1,1-trichloro-	0.362	0.0046	1.26
Ethane, 1,2-dichloro-	0.216	0.0029	1.35
Benzene	0.366	0.0065	1.77
Carbon tetrachloride	0.400	0.0043	1.07
Benzene, 1,4-difluoro(SS2)	2.424	0.0255	1.05
Trichloroethylene	0.201	0.0025	1.23
Ethane, 1,2-chloro-	0.033	0.0009	2.77
Cis-1,3-dichloropropene	0.071	0.0021	2.89
Trans-1,3-dichloropropene	0.021	0.0005	2.57
Toluene	0.257	0.0038	1.46
Ethane, 1,1,2-trichloro-	0.092	0.0011	1.20
Tetrachloroethylene	0.169	0.0028	1.61
1,2-dibromoethane	0.109	0.0026	2.37
Benzene, chloro-	0.219	0.0012	0.56
Ethylbenzene	0.380	0.0038	1.00
Xylene(p+m)	0.310	0.0028	0.91
Styrene	0.134	0.001	0.76
Benzene, 1,4-dimethyl-	0.315	0.0019	0.61
Ethane, 1,1,2,2-tetrachloro	0.190	0.0041	2.17
Benzene, 1-bromo-4-fluoro-(SS3)	0.851	0.0098	1.14
Benzene, 1,2,3-trimethyl-	0.316	0.0039	1.22
Benzene, 1,2,4-trimethyl-	0.345	0.0046	1.33
Benzene, 1,2-dichloro-	0.263	0.0039	1.47
Benzene, 1,3-dichloro-	0.263	0.0046	1.75
Benzene, 1,4-dichloro-	0.239	0.0036	1.49
Benzene, 1,2,4-trichloro-	0.182	0.0052	2.84
1,1,2,3,4,4-Hexachloro-1,3-butadiene	0.221	0.0048	2.18

Headquarters: GD Environmental Supplies, Inc.
651 N. Plano Rd. #429, Richardson TX 75081
E-mail: drdal@gdair.com
Website: www.nutechins.com, T: 972 480 8908; F: 972 480 8308

Sales Office: New Star Environmental, Inc.
3293 Ashburton Chase NE, Roswell GA 30075
E-mail: Sales@NewStarEnvironmental.com
Website: www.NewStarEnvironmental.com, T: 770 998 0296; F: 770 998 9794

NUTECH 3550 UPGRADE PACK

An Upgrade Pack is available to upgrade your old 3550 into a Model 3551 using the latest available state-of-the-art technology in the preconcentrator industry. The Upgrade Pack consists of a new software and a new control board to replace the two boards in the old design. The board replacement is quick and easy and only takes a few minutes to upgrade & enjoy all the benefits of the new model 3551.

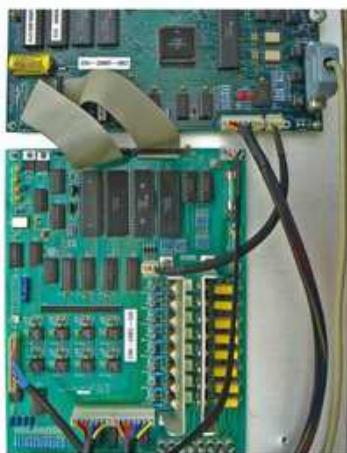


Figure 1: Old model with two control boards.



Figure 2: Unplug all connectors



Figure 4: Plug in the connectors



Figure 3: Replace the control board

Headquarters: GD Environmental Supplies, Inc.
651 N. Plano Rd. #429, Richardson TX 75081
E-mail: drdal@gdair.com
Website: www.nutechins.com, T: 972 480 8908; F: 972 480 8308

21

Sales Office: New Star Environmental, Inc.
3293 Ashburton Chase NE, Roswell GA 30075
E-mail: Sales@NewStarEnvironmental.com
Website: www.NewStarEnvironmental.com, T: 770 998 0296; F: 770 998 9794



GD ENVIRONMENTAL SUPPLIES, INC.

ACCESSORIES

A Tedlar Bag is an alternative sampling container for air VOC analysis. The Tedlar Bag is made from a DuPont special material PVF film with a PEF-coated septa to keep the gas sample stable and leak free.

GD Environmental Supplies manufactures high quality Tedlar bags with standard volumes of 1, 3, 5 and 10 liters.



CALIBRATION STANDARDS

GD Environmental Supplies offers NIST Traceable calibration standards from Spectra Gases, Inc.

TO-14, 39 Compounds Standard

TO-14, 41 Compounds Standard

TO-15, 62 Compounds Standard

PAMS, 62 Compounds Standard

Other client specified standards

Regulators

INITIAL INSTALLATION AND TOOLS

GD Environmental provides all the necessary installation kits and tools for the initial installation and additional maintenance. We are a single resource for all turnkey solutions. GD Environmental will integrate all system parts from sample inlet to final MS data handling. We will help to set up all the necessary performance methods including preconcentrator methods and GC/MS methods. We will assist with all applications and research projects.



Headquarters: GD Environmental Supplies, Inc.
651 N. Plano Rd. #429, Richardson TX 75081
E-mail: drdai@gdair.com
Website: www.nutechins.com, T: 972 480 8908; F: 972 480 8308

22

Sales Office: New Star Environmental, Inc.
3293 Ashburton Chase NE, Roswell GA 30075
E-mail: Sales@NewStarEnvironmental.com
Website: www.NewStarEnvironmental.com, T: 770 998 0296; F: 770 998 9794