

MS®Vacufile™ Disposable Vacuum Filtration Units

Vacufile™ Disposable Vacuum Filtration Units which include membrane filter, graduated funnel and polystyrene reservoir bottle with a separate sterile polyethylene cap are the result of years of research. It has great advantage in large volume sample separation and purification for tissue culture media, biological fluids and fixation buffers.



Membrane Solutions

What's New ?

What's new! Membrane Solutions is launching a number of special offers and promotions regularly with hot sale products and newly inventions. We are proud to distribute our new ChromPure syringe filters, G-MP syringe filters, and high efficiency EZ packs. We are planning to expand our product line according to most popular products in the market, if you need some special products that we do not having launched please contact us at 1-866-528-4572 or email us, so that we can better satisfy your needs.



ChromPure™ syringe filter



Bioset™ Monitor



SimplePak™ MCE gridded membrane filter



sample vials



G-MP™ syringe filter



Disposable Vacuum Filtration



Hydrophilic PTFE syringe filter



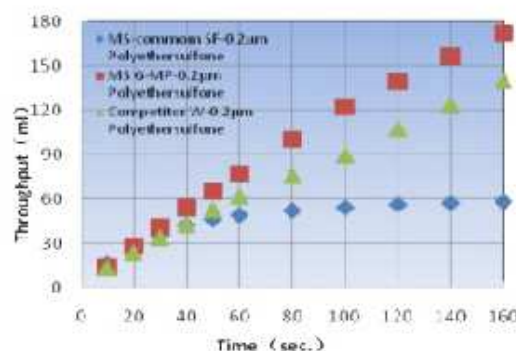
4mm syringe filter



MS® G-MP™ Syringe filters is designed specially to filter high particulate solutions. With **FOUR** layers, its special membrane materials can eliminate sample contamination and allows you to filter difficult samples with

less hand pressure and faster flow rate.

Dynamic throughput via 25mm syringe filter was tested at 10psi with 2.5% TSB (Trypticase Soy Broth)



MS® SimplePak™ are sterile-sealed, without protective paper on top of each filter, and in individual package on a band. The special pleating of the band units ensures that they are perfectly flat when dispensed. With clear advantages including operating, less risk of accidental membrane contamination.



MS® hydrophilic PTFE syringe filters are using special hydrophilic PTFE membrane as the filter medium. This material has a maximal chemical and pH resistance and optically clear when wet with water. Hydrophilic PTFE syringe filter is a versatile filter for aqueous and aggressive organic solvent-based solutions and especially ideal for HPLC operation. Pure polypropylene housings and color-coding housings include smooth rim or gear rim are all available.



MS[®] G-MP syringe filter



Introduction

MS[®] G-MP syringe filters are designed specially to filter high particulate solutions. With four layers, the first filter is a composite membrane of 10µm glass fiber and 1.0µm PP, the second prefilter is 0.7µm GF/F membrane media, the last one is filtration media as specified. G-MP special membrane materials can eliminate sample contamination and allow you to filter difficult samples with less hand pressure and fast flow rate. They prevent the build up of back pressure typically caused by the blocking of an unprotected membrane.

Feature

Increased volume throughput:

Volume of sample filtered can be three to seven times greater than conventional filters.

Superior performance:

Four layers of filtration media reduce blockage and the need to replace the filter in mid-operation.

Less hand force required:

The unique pre-filter layer allows high particulate samples to be filtered with less hand force, minimizing operator fatigue.

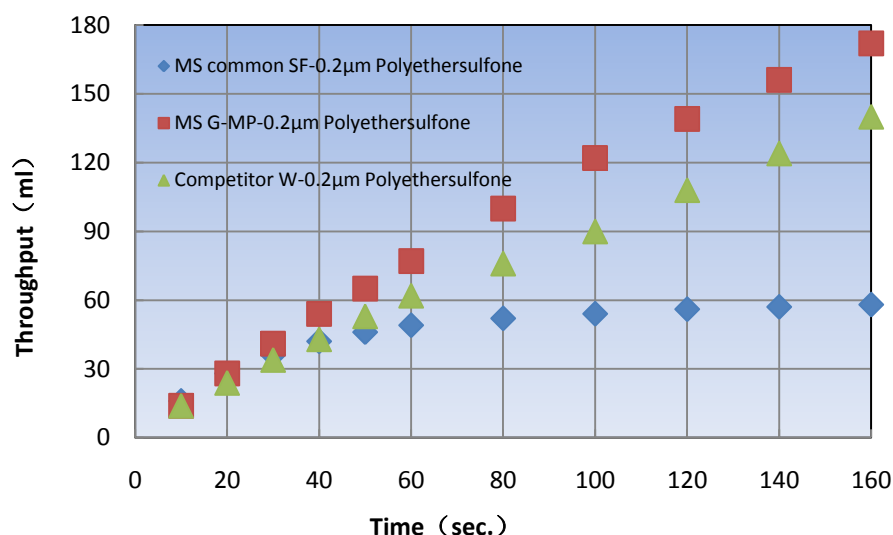


Application

- Hard-to-filter samples
- Dissolution testing
- Content uniformity
- Environmental samples
- Composite assays
- Food analysis
- Biofuel analysis

MS vs. competition

G-MP syringe filters contain four filtration layers which help reduce blockage and increase volume throughput.



Dynamic throughput via 25mm syringe filters was tested at 10psi with 2.5% TSB (Trypticase Soy Broth)

Technical Specification

Specification	25mm
Filtration Area	4.6cm ²
Maximum Pressure	75psi(5.2bar)
Materials of construction	Housing: Polypropylene Filtration Media: As specified
Connectors	Inlet: Female Luer Lock (FLL) Outlet: Male Luer (ML)
Flow direction	Flow from inlet to outlet (FLL to ML)



Order Information

25mm Non-sterile

Catalog No.	Membrane	Pore size(μm)	Package(pcs/pk)
SFNY025022NM	Nylon	0.22	100
SFNY025045NM	Nylon	0.45	100
SFPVDF025022NM	PVDF	0.22	100
SFPVDF025045NM	PVDF	0.45	100
SFPTFE025022NM	PTFE	0.22	100
SFPTFE025045NM	PTFE	0.45	100
SFPES025022NM	PES	0.22	100
SFPES025045NM	PES	0.45	100
SFPP025022NM	PP	0.22	100
SFPP025045NM	PP	0.45	100
SFCA025022NM	CA	0.22	100
SFCA025045NM	CA	0.45	100

Note: Sterilization is available.

Membrane Solutions



Vacufil™ Disposable Vacuum Filtration Units



Vacufil™ disposable Vacuum Filtration units are very useful in large volume samples separation and purification for tissue culture media, biological fluids and fixation buffers.

The unit includes membrane filter, graduated funnel of clear polystyrene with polyethylene neck adapter and polystyrene reservoir bottle with a separate sterile polyethylene cap. Glass fiber pre-filter is available.

Two membranes are available to meet all of your filtration needs: PES and MCE.

Available in three styles: complete filter/storage unit and bottle top filters and the reservoir bottle.

Application

- Ideal for filtration of tissue culture media, biological fluids, fixation buffers etc
- Cell culture media and other aqueous solutions
- Sterile filtration of solutions which can't be autoclaved
- Sterile filtration and clarification of difficult-to-filter aqueous solutions with a glass fiber pre-filter.



Features

- Available in of 0.22µm and 0.45µm
- Filter Diameter: 50mm membrane diameter
- Volume sizes: 250 and 500ml
- Light weight and heavy wall construction
- Large knurls on the reservoir bottle cap for easy screw
- Reservoir bottles feature easy grip sides for improved handling, simplify tightening/ loosening and adjustments
- Designed wide and easy access bottle mouth for efficiently and stably pour out
- Engraved graduation ensure veracity
- Designed hose connector can fit multiplicate hose diameters
- Detergent-free, tissue culture compatible, and heat-sealed to the support grid to maximize flow rate, reduce foaming and protein denaturization
- Certified non- pyrogenic



Choosing guide

Membrane	Characteristics and typical application
PES	Provides fast flow rates and very low protein binding and extractables than cellulosic or nylon membranes, highly recommended for filtering and sterilization cell culture media, biological fluids of aqueous solutions.
MCE	Especially recommended for applications requiring low protein binding, such as filtering culture media containing sera.

Ordering information:

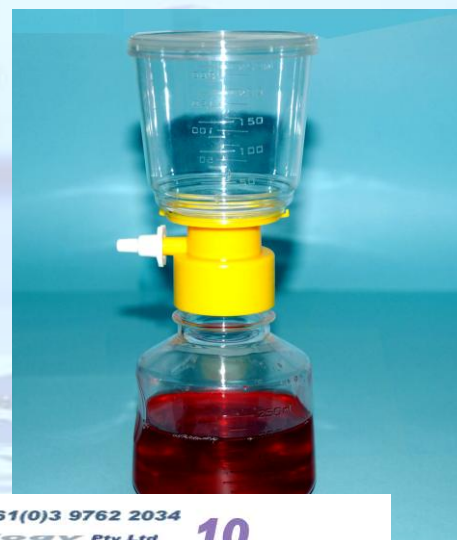
- Packaged in easy peel-to-open plastic bag, and receiver bottle cap is individually wrapped
- Each individual unit is lot-numbered for easy identification and tracking.
- Gamma irradiation sterilized

Technical Product Information

Item number	Funnel Capacity	Pore Size(μm)	Membrane Material	Qty per Case
VFPPE122250	Diameter:50mm	0.22	PES	12
VFPMCE122250	Upper capacity and receiver capacity are 250ml	0.22	MCE	12
VFPPE145250		0.45	PES	12
VFPMCE145250		0.45	MCE	12
Item number	Funnel Capacity	Pore Size(μm)	Membrane Material	Qty per Case
VFPPE122500	Diameter:50mm	0.22	PES	12
VFPMCE122500	Upper capacity	0.22	MCE	12
VFPPE145500	250ml and receiver	0.45	PES	12
VFPMCE145500	capacity is 500ml	0.45	MCE	12

For some special experiment purposes or research outlay saving and etc, the Filter Upper Cups and Reservoir Bottle are also available respectively

Filter Funnel Bottle Top Cups				
Item number	Funnel Capacity	Pore Size(μm)	Membrane Material	Qty per Case
VFPPE122250F	250mL Capacity Diameter:50mm Filter top funnel	0.22	PES	24
VFPMCE122250F			MCE	24
VFPPE145250F		0.45	PES	24
VFPMCE145250F			MCE	24
Reservoir Bottles				
Item number	Bottle Capacity		Bottle Material	Qty per Case
VFP250B	250ml		PS	24
VFP500B	500ml		PS	24



Glass Fiber Pre-filters

Glass fiber pre-filters may be placed in the funnel on top of the membrane and secured by a convenient tab for difficult-to-filter solutions.

Recommended filter size GFB(1.0 μ m) and GFF(0.7 μ m) dependant on apparatus used. Must be ordered separately.

Item number	Description	Pack
SPGFB047100N	Glass Fiber Filter, Binder free, Pore:1.0(μ m), Diameter:47(mm)	100pk
SPGFF047070N	Glass Fiber Filter, Binder free, Pore: 0.7(μ m), Diameter:47(mm)	100/pk

Membrane Solutions LLC

Membrane Solutions



ChromPure™ Syringe Filter

With high-quality Membrane



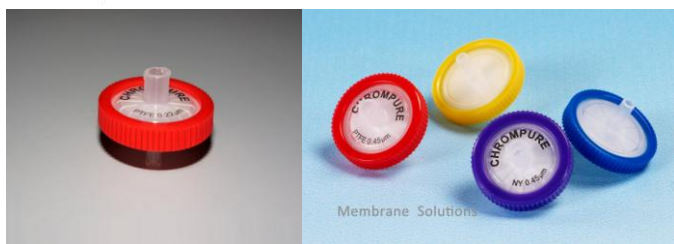
Unique design of gear rim



Non-pyrogenic



Easier to tell the filter membrane



Chrompure™ Syringe Filter

More perfect more efficient

MS ChromPure™ Syringe Filters are syringe-operated filters for the clarification of aqueous solutions (column eluates, tissue culture additives, HPLC samples, etc.). It is offered at a fair and competitive price. It is further to do the beautification appearance on general syringe filters basis and containing high quality membrane materials to make your experiment performance more perfect. Its unique design of gear edge, make the products more beautiful and innovative. The Classic range is available in all of the major membranes including Nylon, PTFE, PVDF, CA and PES, which are supplied in 13mm, 25mm formats in virgin medical polypropylene housings.



Features

Easy twist:

Gear rim ring for better handling

Color coding:

Easier to tell the filter membrane

Better membrane media:

Improved membrane flow rates

Application Compatibility:

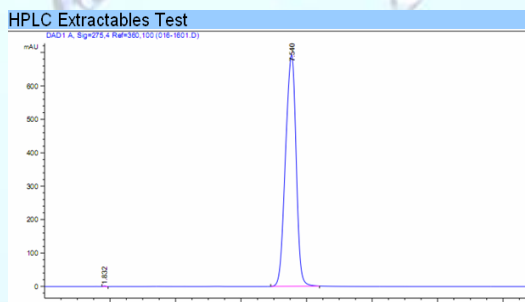
Broad range of filtration media meets diverse application needs and best for chromatography application

Sterile:

Filters can be purchased pre-sterilized by Gamma radiation and individually packaged

- HPLC certification which guarantees the filters will not produce extraneous peaks in the UV range.
- 100% integrity tested with higher burst strength ratings assuring they will perform consistently.
- Available in 13 and 25mm sizes and available in sterile, too.
- 0.45 µm for most clarification applications and 0.22 µm when fine particulate removal is required. Other pore size are available in 0.8 µm-5 µm.

Validated HPLC Performance

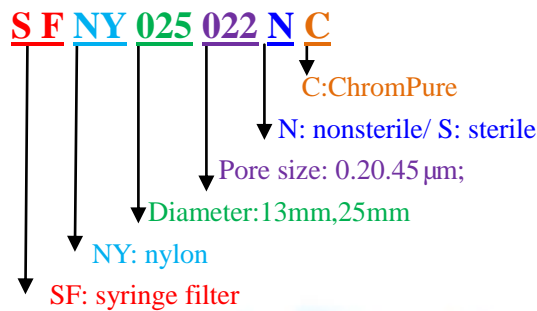


Agilent Technologies 1200, Column: C18 UV = 254 nm
Mob.phase: MeOH/H₂O: 20:80, Temperature: 25 °C, Flow rate: 0.8ml/min, sample: 2mg/ml Bergenin (in Methanol)

Membrane Solutions

Ordering information:

A: How to order?









Application

- HPLC sample preparation
- Routine QC analysis
- Content uniformity
- Removal of protein precipitates
- Dissolution testing
- Food analysis
- Biofuel analysis
- Environmental samples

Technical specifications

Parameters	13mm	25mm
Effective Filtration Area(cm ²)	1.09	4.08
Maximum Pressure	87 psi (6.0 bar) at 20 °C	87psi (6.0 bar) at 20 °C
Maximum Operating Temperature	50°C	50°C
Materials of Construction	Housing: Polypropylene	Housing: Polypropylene
	Filtration Media: As specified	Filtration Media: As specified
Holdup volume (µl)	<25	<100
Sample volume (ml)	<10	<100
Connectors	Inlet: Female Luer Lock (FLL)	Inlet: Female Luer Lock (FLL)
	Outlet: Male Slip Luer (MSL)	Outlet: Male Slip Luer (MSL)
Flow Direction	Flow from inlet to outlet (FLL to MSL)	Flow from inlet to outlet (FLL to MSL)

Exclusive Distributors Wanted

Standard Sample Pack			
Nylon syringe filter (100pcs)		PTFE syringe filter (100pcs)	
	13mm, 0.22/0.45µm,		13mm, 0.22/0.45µm,
	25mm, 0.22/0.45µm,		25mm, 0.22/0.45µm,
PVDF syringe filter (100pcs)		PES syringe filter (100pcs)	
	13mm, 0.22/0.45µm,		13mm, 0.22/0.45µm,
	25mm, 0.22/0.45µm,		25mm, 0.22/0.45µm,
GF syringe filter (100pcs)		MCE syringe filter (100pcs)	
	13mm, 0.22/0.45µm,		13mm, 0.22/0.45µm,
	25mm, 0.22/0.45µm,		25mm, 0.22/0.45µm,

Ordering information

13mm

Catalogue No.	Membrane	pore size(μm)	Quantity/pack(pcs)
SFNY013022NC	nylon	0.22	100
SFNY013045NC	nylon	0.45	100
SFPTFE013022NBC	PTFE	0.22	100
SFPTFE013045NBC	PTFE	0.45	100
SFPTFE013022NLC	PTFE	0.22	100
SFPTFE013045NLC	PTFE	0.45	100
SFPVDF013022NC	PVDF	0.22	100
SFPVDF013045NC	PVDF	0.45	100
SFPES013022NC	PES	0.22	100
SFPES013045NC	PES	0.45	100
SFCA013022NC	CA	0.22	100
SFCA013045NC	CA	0.45	100
SFGF013022NC	GF	0.22	100
SFGF013045NC	GF	0.45	100
SFMCE013022NC	MCE	0.22	100
SFMCE013045NC	MCE	0.45	100

25mm

Catalogue No.	Membrane	pore size(μm)	Quantity/pack(pcs)
SFNY025022NC	Nylon	0.22	100
SFNY025045NC	Nylon	0.45	100
SFPTFE025022NBC	PTFE	0.22	100
SFPTFE025045NBC	PTFE	0.45	100
SFPTFE025022NLC	PTFE	0.22	100
SFPTFE025045NLC	PTFE	0.45	100
SFPVDF025022NC	PVDF	0.22	100
SFPVDF025045NC	PVDF	0.45	100
SFPES025022NC	PES	0.22	100
SFPES025045NC	PES	0.45	100
SFCA025022NC	CA	0.22	100
SFCA025045NC	CA	0.45	100
SFGF025022NC	GF	0.22	100
SFGF025045NC	GF	0.45	100
SFMCE025022NC	MCE	0.22	100
SFMCE025045NC	MCE	0.45	100

Note:

1. Special specifications are available like pore size: 0.1um, 1.0um, 3.0um, 5.0um. Various membrane medium with pp or glass fiber prefilter are available.
2. Sterile Syringe filters of all material are available.

More information please visit our website www.membrane-solutions.com.

Membrane Solutions



MS® Hydrophilic PTFE Syringe Filters



Introduction

MS® Hydrophilic PTFE syringe filters are using special hydrophilic PTFE membrane as the filter medium. This material has a maximal chemical and pH resistance, and optically clear when wet with water. Hydrophilic PTFE syringe filter is a versatile filter for aqueous and aggressive organic solvent-based solutions, and especially ideal for HPLC operation. Pure polypropylene housings and color-coding housings include smooth rim or gear rim are all available

Feature

- Low protein binding fine particle removal from aqueous and organic solutions.
- Accurate analysis HPLC certified for low levels of UV-absorbing extractables.
- High flow rates with minimal aqueous extractables.
- Low surface friction coefficient: 0.1.
- Wide range of working temperature: 180-260°C

Application

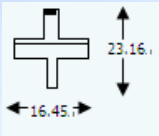
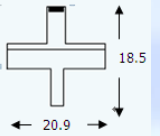
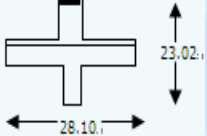
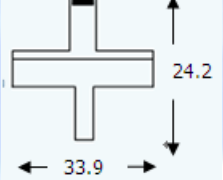
- Highly recommended for filtering HPLC samples and mobile phases.
- Organic solvent with strong chemical causticity filtration

Cross Reference

Company	Product	Description
MS	Hydrophilic PTFE syringe filter	A versatile filter for aqueous and aggressive organic solvent-based solutions and especially ideal for HPLC operation.
Pall	GHP syringe filter	Hydrophilic PP membrane media. Highly recommended for filtering HPLC samples and mobile phases.
Millipore	Millex-GV Millex-HV	Hydrophilic PVDF membrane media. Preparation of protein-containing solutions prior to chromatography



Technical Specification

Parameters	13mm	17mm	25mm	30mm
Membrane material	PTFE	PTFE	PTFE	PTFE
Housing material	PP	PP	PP	PP
Filtration area (cm ²)	0.65	1.3	3.90	4.60
Pore Size (µm)	0.2,0.45	0.2,0.45	0.2,0.45	0.2,0.45
Holdup Volume (µL)	<10	<25	<30	<55
Sample Volume (µL)	<12	<100	<100	<140
Maximum Operating Temperature	130°C	130°C	130°C	130°C
Maximum Operating Pressure	130psi	130psi	130psi	130psi
Sample Type	>Aqueous >Organic	>Aqueous >Organic	>Aqueous >Organic	>Aqueous >Organic
Connections	Inlet: FLL Outlet: MSL	Inlet: FLL Outlet: MSL	Inlet: FLL Outlet: MSL	Inlet: FLL Outlet: MSL
Flow Direction	From FLL to MSL	From FLL to MSL	From FLL to MSL	From FLL to MSL
Dimensions (mm)				



Order Information

Catalogue No.	Membrane	Pore size(μm)	Quantity/pack(pcs)
SFPTFE013022NL	PTFE	0.22	100
SFPTFE013045NL	PTFE	0.45	100
SFPTFE025022NL	PTFE	0.22	100
SFPTFE025045NL	PTFE	0.45	100
SFPTFE033022NL	PTFE	0.22	100
SFPTFE033045NL	PTFE	0.45	100
SFPTFE013022SL	PTFE	0.22	100
SFPTFE013045SL	PTFE	0.45	100
SFPTFE025022SL	PTFE	0.22	100
SFPTFE025045SL	PTFE	0.45	100
SFPTFE033022SL	PTFE	0.22	100
SFPTFE033045SL	PTFE	0.45	100

Note:

membrane medium with pp or glass fiber prefilter are available.

Membrane Solutions

Membrane Solutions LLC



MS[®] 4mm Syringe Filter



Introduction

MS[®] 4mm Syringe filters are purpose-built with features designed to bring the highest levels of performance and purity to your research. It is suitable for the sample volume less than 1 mL. We incorporate a variety of membranes to offer separation and purification solutions for the majority of your laboratory needs.

Features

- 4 mm diameter syringe filter
- Sample volume up to 1 mL
- Low hold-up volume < 10 μ L ensures maximum sample recovery



Applications

- HPLC samples containing low solid content – filtration will improve column life
- CE (Capillary Electrophoresis) samples – filtration will eliminate spurious peaks
- Sterile filtration of low volume samples
- UV/Vis samples – filter directly into cuvette using tube tip
- Refractometry – filter samples to prevent damage to instrument optics and improve accuracy of results
- Minimizing non-specific binding to membrane (due to small membrane size)

Technical Specification

Membrane	Nylon	PTFE	PES	GF	CA	MCE
Pore size(μ m)	0.22, 0.45					
Diameter (mm)	4					
Housing Material	Pigment-free Polypropylene					
Connector (inlet/outlet)	Female Luer Lock/Male Luer Slip					
Burst Pressure (psi)	75					
Retain Volume (μ L)	10					
Sample Volume (mL)	1					



Order Information

Non-Sterile

Item#	Membrane	Pore size(μm)	Quantity/pack(pcs)
SFNY004022N	Nylon	0.22	200
SFNY004045N	Nylon	0.45	200
SFPTFE004022NB	PTFE	0.22	200
SFPTFE004045NB	PTFE	0.45	200
SFPTFE004022NL	PTFE	0.22	200
SFPTFE004045NL	PTFE	0.45	200
SFPES004022N	PES	0.22	200
SFPES004045N	PES	0.45	200
SFGF004022N	GF	0.22	200
SFGF004045N	GF	0.45	200
SFCA004022N	CA	0.22	200
SFCA004045N	CA	0.45	200
SFMCE004022N	MCE	0.22	200
SFMCE004045N	MCE	0.45	200

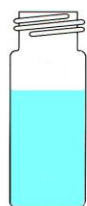
Sterile

Item#	Membrane	Pore size(μm)	Quantity/pack(pcs)
SFNY004022S	Nylon	0.22	200
SFNY004045S	Nylon	0.45	200
SFPTFE004022SB	PTFE	0.22	200
SFPTFE004045SB	PTFE	0.45	200
SFPTFE004022SL	PTFE	0.22	200
SFPTFE004045SL	PTFE	0.45	200
SFPES004022S	PES	0.22	200
SFPES004045S	PES	0.45	200
SFGF004022S	GF	0.22	200
SFGF004045S	GF	0.45	200
SFCA004022S	CA	0.22	200
SFCA004045S	CA	0.45	200
SFMCE004022S	MCE	0.22	200
SFMCE004045S	MCE	0.45	200

MS- Vials



2mL Screw Top Vials



LBSV082C	2mL clear vial, 10-425 screw top	100/Pk
LBSV002C	2mL clear vial, 9-425 screw top	100/Pk
LBSV012C	2mL clear vial, 8-425 screw top	100/Pk
LBSV092C	2mL clear vial, 10-425 screw top, graduated with writing area	100/Pk
LBSV022C	2mL clear vial, 9-425 screw top, graduated with writing area	100/Pk
LBSV032C	2mL clear vial, 8-425 screw top, graduated with writing area	100/Pk
LBSV082A	2mL amber vial, 10-425 screw top	100/Pk
LBSV002A	2mL amber vial, 9-425 screw top	100/Pk
LBSV012A	2mL amber vial, 8-425 screw top	100/Pk
LBSV092A	2mL amber vial, 10-425 screw top, graduated with writing area	100/Pk
LBSV022A	2mL amber vial, 9-425 screw top, graduated with writing area	100/Pk
LBSV032A	2mL amber vial, 8-425 screw top, graduated with writing area	100/Pk



2mL Crimp Top Vials



LBSV042C	2mL clear vial, crimp top	100/Pk
LBSV062C	2mL clear vial, crimp top, graduated with writing area	100/Pk
LBSV042C	2mL amber vial, crimp top	100/Pk
LBSV062C	2mL amber vial, crimp top, graduated with writing area	100/Pk

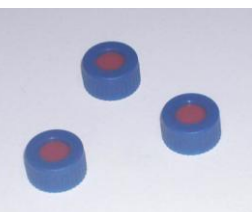
Septa for 2mL Vials



LBSV02RS	White PTFE/red Rubber septa, for 2mL 8-425 screw top vial	10000/Pk
LBSV02SS	Red PTFE/white silicone septa, for 2mL 8-425 screw top vial	10000/Pk
LBSV03RS	White PTFE/red Rubber septa, for 2mL 9-425 screw top vial	10000/Pk
LBSV03SS	Red PTFE/white silicone septa, for 2mL 9-425 screw top vial	10000/Pk
LBSV23SS	Blue PTFE/white silicone septa, Pre-slit, for 2mL 9-425 screw top vial	10000/Pk
LBSV33SS	Red PTFE/white silicone/red PTFE septa, for 2mL 9-425 screw top vial	10000/Pk
LBSV04RS	White PTFE/red Rubber septa, for 2mL crimp top vial	10000/Pk
LBSV04SS	Red PTFE/white silicone septa, for 2mL crimp top vial	10000/Pk



Cap for 2mL Vials

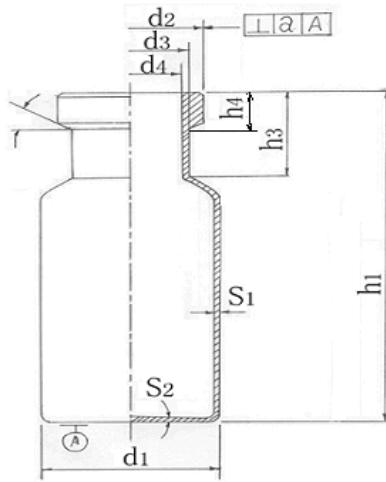


LBSV002	Blue screw cap with hole, for 2mL 9-425 screw top vial	100/Pk
LBSV012	Black screw cap with hole, for 2mL 8-425 screw top vial	100/Pk
LBSV032	Blue screw cap with hole, for 2mL 8-425 screw top vial	100/Pk
LBSV022	Aluminium cap with hole, for 2mL crimp top vial	100/Pk

Septa + Cap for 2mL Vials

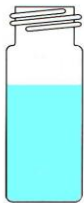
LBSV002CRS	White PTFE/red Rubber septa + Blue screw cap with hole, for 2mL 9-425 screw top vial	100/Pk
LBSV012CRS	White PTFE/red Rubber septa + Black screw cap with hole, for 2mL 8-425 screw top vial	100/Pk
LBSV102CSS	Red PTFE/white silicone septa + Blue screw cap with hole, for 2mL 9-425 screw top vial	100/Pk
LBSV012CSS	Red PTFE/white silicone septa + Black screw cap with hole, for 2mL 8-425 screw top vial	100/Pk
LBSV112CRS	White PTFE/red rubber septa + Aluminium cap with hole, for 2mL crimp top vial	100/Pk
LBSV122CRS	Red PTFE/ white silicone septa + Aluminium cap with hole, for 2mL crimp top vial	100/Pk
LBSV302CRS	Blue PTFE/white Rubber septa, pre-slit + Blue screw cap with hole, for 2mL 9-425 screw top vial	100/Pk
LBSV402CSS		100/Pk

2mL crimp top vials



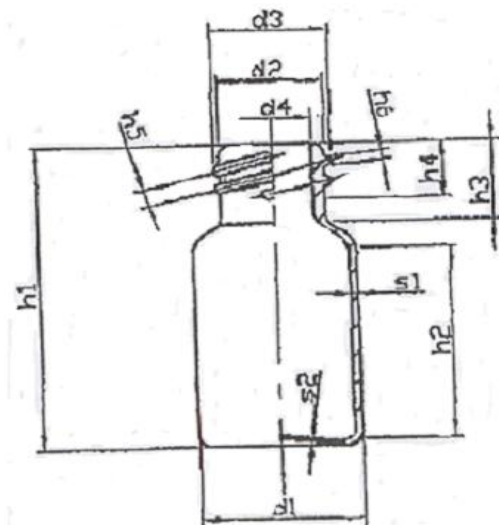
d1	11.6 ± 0.3
h1	32.0 ± 0.5
d2	10.7 ± 0.2
d4	6.0 ± 0.2
h4	3.6 ± 0.2
d3	8.3 ± 0.3
h3	≈ 7.5
S2	≥ 0.4
S1	0.85 ± 0.05

2mL screw top vials (8-425)



d1	11.6 ± 0.25
d2	≤ 8.0
d4	5.0 ± 0.30
h1	32.0 ± 0.50
d3	8.8 ± 0.30
h3	≈ 7.8
h5	1.6
h6	1.0
S2	≥ 0.50
S1	0.85 ± 0.04

2mL screw top vials (9-425)



d1	11.6 ± 0.2
d2	8.1-8.5
d4	6.0 ± 0.20
h1	32.0 ± 0.50
d3	9.4 ± 0.25
h3	7.3-7.9
h5	≈ 1.2
h6	≈ 0.9
S2	≥ 0.50
S1	0.85 ± 0.04

4mL, 10mL, 20mL, 30mL, 40mL sample vials and More Product

Membrane Solutions

Filtration sets for microbiology

BioSet™ Monitor

MS® disposable sterile BioSet™ Monitor are for contaminants monitoring, microbiological testing and sterility testing in liquid samples like food/beverages from raw materials to finished products.

The easy system of low-cost disposable, ready to use sterile filter sets bring significant convenience to your daily activities in the laboratory and enable you to optimize the analysis time for routine testing.



Each unit consisting of a measured filter funnel, base, pad, membrane, removable lid and plug.

Feature:

- MCE gridded membrane with pad with choice of pore size (0.2, 0.45, 0.8 µm)
- Black or white gridded membrane choice for better contrast
- Ready to use: testing time can be significantly reduced
- All-in-one system: filtration unit easily converts to a petri dish, which can be labeled and incubated for culturing
- Heavy-duty styrene, translucent, lightweight, and have reinforced rims and inside fluting
- Heat-resistant, chemically inert hydrophobically non stick
- Removable 100ml graduated plastic funnel
- No risk of phthalate contamination
- Easy handling



Application:

- Total colony counts detection, especially for detection of microorganisms contamination in liquids like beverage, wine and so on
- Qualitative and quantitative analysis of microbiological testing of pharmaceuticals, food, beverages, water and other liquids.

Membrane Solutions



Membrane Solutions LLC

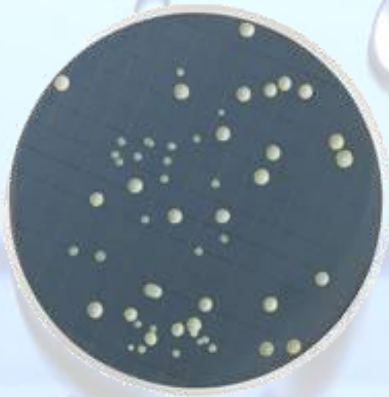
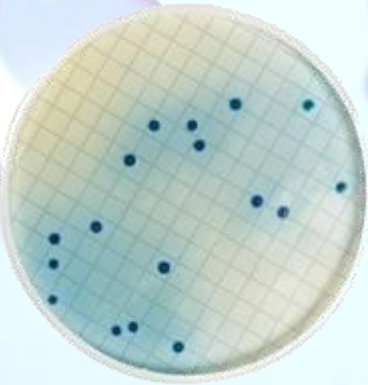
Ordering information

Cat No.	Filter color	Pore size (µm)	Filter diameter (mm)	pcs/pk
BM047022W	white/black grid, 100ml	0.22	47mm	50
BM047045W		0.45	47mm	50
BM047080W		0.80	47mm	50
BM047045B	Black/white grid, 100ml	0.45	47mm	50
BM047080B		0.80	47mm	50

More information pls visit our website www.membrane-solutions.com.

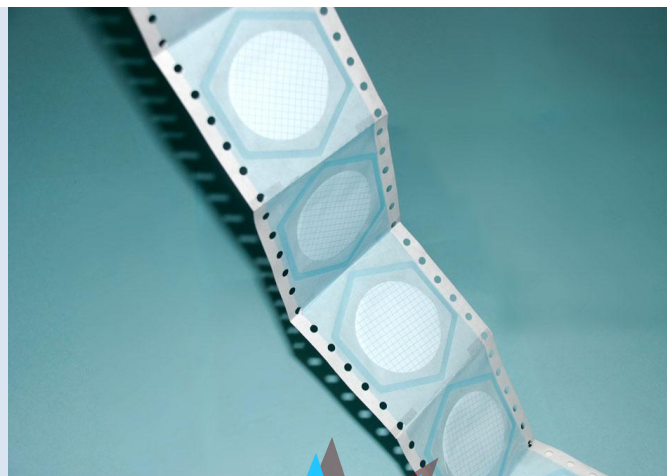
Or mail us at : info@membrane-solutions.com

Membrane Solutions LLC



SimplePak™ are sterile-sealed, without protective paper on top of each filter, and in a individual package on a band. The special pleating of the band units ensures that they are perfectly flat when dispensed.

With clear advantages including operating convenience, less risk of accidental membrane contamination, less care and skill to aseptically separate membrane from packaging to reduce time per test.



New !

Feature

- Excellent retention and colony growth, high recovery rates of microorganisms
- Individually wrapped in easy-peel band pack, gamma irradiation
- Calibrated Mixed Cellulose Esters filters, which designed to maximize flow rates
- The filter type, diameter, lot number, sterilization and expiration date are printed on the package
- “Multi-fit”, are designed as “one size fits all,” which can be used in all standard dispensers

Application

- General purpose of all microorganisms examination in medical, wine, beverage and pharmaceutical industry
- Designed for use in vacuum and pressure filtration applications
- Individually packed, sterile ideal for microbiology analysis and sterility testing
- *E. Coli* bacteria recovery and detection in water/waste water analysis
- Analysis of yeast and mold and *Legionella* sp. examination of White, beige colonies

Specifications

Filter Media: Mixed Cellulose Esters

Color: white or black

Surface: gridded

Wettability: hydrophilic

Thermal Resistance: 130 ° C

Extractables (Boiling Water): < 2%

Sterilization: sterilized by gamma irradiation

Ordering Information

SimplePak™ MCE gridded membrane filter				
Cat No.	Filter color	Pore size (m)	Filter diameter (mm)	Pcs/pk
MFMCE047022CW	White with black grid	0.22	47mm	150
MFMCE047045CW		0.45	47mm	150
MFMCE047080CW		0.80	47mm	150
MFMCE050022CW		0.22	50mm	150
MFMCE050045CW		0.45	50mm	150
MFMCE050080CW		0.80	50mm	150
MFMCE047045CB	Black with white grid	0.45	47mm	150
MFMCE047080CB		0.80	47mm	150
MFMCE050045CB		0.45	50mm	150
MFMCE050080CB		0.80	50mm	150

Promotion:

Order ≥ \$10,000, 1 free dispenser



Membrane Solutions LLC
USA

