



LABORATORY EQUIPMENT CATALOG

2023-10

Biocomma Limited Huizhou Production Base



Biocomma Limited Shenzhen
Production Base



HROMalytic +61(0)3 9762 2034
ECHnology Pty Ltd

Australian Distributors
Importers & Manufacturers
www.chromtech.net.au

Website NEW : www.chromalytic.net.au E-mail : info@chromtech.net.au Tel: 03 9762 2034 . . . in AUSTRALIA

Company Profile

Biocomma's mission is providing innovative consumables and comprehensive solutions based on innovations of materials to global clients in sciences and healthcare fields.

Since Biocomma established in 2006, we continue to increase R&D and engineering investment to build a technical innovation and industrialization platform which focus on polymer filtration materials, adsorption materials, and diagnostic membrane materials. Also, technical breakthrough has been realized in related materials.

Biocomma's accumulation of years of consumable categories covers the collection, transportation, filtration, separation, purification, preservation, culture, etc. In addition, we also lay out respiratory care and disposable sterile medical consumables. Our products can be widely applied to scientific research, analysis and testing, drug research and development, in vitro diagnosis, medical rehabilitation and other fields.

After years of growth and development, Biocomma's products have been widely recognized by the market. Now we have become an important supplier of laboratory filters, gene synthesis tools, sample collection and other consumable products. We established close cooperation with dozens of industry leaders worldwide, and our business covers more than 50 countries and regions.



CONTENTS

M32 Nucleic Acid Extraction System	6
M48 Nucleic Acid Extraction System	7
M96 Nucleic Acid Extraction System	8
DC48 Automated Sample Preparation System.....	9
BP96A Automated Liquid Handling Workstation.....	10
DC10 Automated Screw Cap Capper/Decapper	11
DY-02 Blood Spot Dryer	12
BCM2500 Multifunctional Vortex Mixer	13
SDC-3000 Multi-Tube Vortex Mixer	14
BCN9602 96-Well Plate Nitrogen Evaporator	15
BCN9603 96-Well Plate Intelligent Nitrogen Evaporator	16
NFW80 High-Throughput Automated Nitrogen Evaporator	17
BN24 Intelligent Water-Bath Nitrogen Evaporator	18
SPEMF Solid Phase Extraction Vacuum Manifold	19
Vacuum Manifolds	20
Vacuum Pump	20
BCY96 Positive Pressure 96 Processor	21
BCS901 Heat Sealer	22
TWM160 Cyclone Mill	23
TD100 Knife Mill	24
WT-10 Thermostatic Water Bath	25
TS-60 Incubator Shaker	26
MTB-100 Dry Block Incubator	27
CF14 High Speed Refrigerated Centrifuge	28
H16GM High Speed Centrifuge.....	29
UGF Noiseless Ultrasonic Cleaner	30
Manual Pipettes	31
Bottletop Dispensers	31
HZK Series Balance	32
HZY Series Balance	32
HZ Series Balance	32



M32 Nucleic Acid Extraction System

Based on magnetic beads adsorption and separation method, M32 Automated Nucleic Acid Extraction Systems achieves fast extraction of 1~32 samples at a time. The device is widely applied to disease prevention and control, animal quarantine, clinical diagnosis, entry-exit inspection quarantine, food and drug administration, forensic identification, teaching and scientific research.

Features

Efficiency: 9 min rapid extraction achieved with biocomma Nucleic Acid Extraction Kits.

Anti-Pollution: avoid aerosol pollution between batches and reduce operation risks by disposable tip combs and ultraviolet light.

Intelligent: graphical programming interface is easy to understand and operate.

Standardization: edit and save multiple programs as needed to ensure uniform experimental conditions.

Automation: automated nucleic acid extraction is 4-5 times faster than a single manual extraction.

Open System: compatible with all kinds of magnetic bead nucleic acid purification kits on the market.



M32 Purification Kits



8 Strip Tip Combs

Parameters

Model	M32
Throughput	1~32
Volume	20~1000 μ L
Consumables	96 well deep plate + 8 strip tip combs
Recovery	$\geq 99\%$
CV	$< 5\%$
Humidity	10~90%
Temperature	10~40 $^{\circ}$ C
Controlling Temperature Range	RT ~ 80 $^{\circ}$ C
Vibration	Level 1-3 adjustable
Sterilization	UV light, exhaust filtration
Reagents	Prepacked magnetic beads nucleic acid extraction kits
Interface	Integrated touch screen
Program	Create new, edit and delete
Port	USB
Dimensions (L*W*H)	400*420*440mm
Power Supply	A.C. 100~220 V, 3.15 A, 50/60 Hz
Weight	25 Kg

Ordering Information

Cat. #	Description	Qty.
NAES-32	M32 Nucleic Acid Extraction System	1 Set/Carton

M48 Nucleic Acid Extraction System

Based on magnetic beads adsorption and separation method, M48 Automated Nucleic Acid Extraction Systems achieves fast extraction of 1~48 samples at a time. The device is widely applied to disease prevention and control, animal quarantine, clinical diagnosis, entry-exit inspection quarantine, food and drug administration, forensic identification, teaching and scientific research.

Features

Cooling: the temperature of all elution positions is less than 25 °C during pyrolysis heating to reduce the maximum of eluent volatilization.

Safety: UV light and exhaust filtration reduce aerosols and volatile gases in the chamber.

Open System: edit extraction programs, mixing modes, and pause at any step on the touch screen. Compatible with all kinds of magnetic bead nucleic acid purification kits on the market.

Variable Throughput: place up to three 96-well plates, each plate extracts 16 samples.

Upgradable: reserved ports to support secondary development. Create a full automation solution.

Convenience: easy to operate, simple and fast.



M48 Purification Kits



8 Strip Tip Combs

Parameters

Model	M48
Throughput	1~48
Volume	20~1000 µL
Consumables	96 well deep plate + 8 strip tip combs
Recovery	≥ 99%
CV	< 5%
Humidity	30~80%
Temperature	10~40 °C
Controlling Temperature Range	4~120 °C
Vibration	Level 1-3 adjustable
Sterilization	UV light, exhaust filtration
Reagents	Prepacked magnetic beads nucleic acid extraction kits
Interface	Integrated touch screen
Program	Create new, edit and delete
Port	USB
Dimensions (L*W*H)	500*460*540 mm
Power Supply	A.C. 100~199 V, 11A / 200~240 V, 6.5 A, 50/60 Hz
Weight	40 Kg

Ordering Information

Cat. #	Description	Qty.
NAES-48	M48 Nucleic Acid Extraction System	1 Set/Carton

M96 Nucleic Acid Extraction System

Based on magnetic beads adsorption and separation method, M96 Automated Nucleic Acid Extraction Systems achieves fast extraction of 96 samples at a time. The device is widely applied to disease prevention and control, animal quarantine, clinical diagnosis, entry-exit inspection quarantine, food and drug administration, forensic identification, teaching and scientific research.

Features

Accuracy: excellent temperature control keeps the temperature at RT to 125 °C. Reach the set temperature quickly through semiconductor refrigeration technology.

High Performance: functions of self-inspection, power-off protection, high temperature alarm, overheat protection, etc., minimize the loss of samples.

Protection: the magnet motor remains stationary during experiment extends the life of the magnet motor and slide rail.

Quiet: unique structural design to minimize the noise and interference in the laboratory during operation.

Programming: visual touch operation, free program editing, and save more than 100 programs.

Open System: compatible with nucleic acid purification kits based on the nano-magnetic beads.



M96 Purification Kits



96 Tip Combs

Parameters

Model	M96
Throughput	1~96
Volume	20~1000 μ L
Consumables	96 well deep plate + 96 tip combs
Recovery	$\geq 99\%$
CV	$< 5\%$
Humidity	10~90%
Temperature	10~40 °C
Controlling temperature range	RT~125 °C
Vibration	Level 1-6 adjustable
Sterilization	UV light
Reagents	Prepacked magnetic beads nucleic acid extraction kits
Interface	Integrated touch screen
Program	Create new, edit and delete
Port	USB
Dimensions (L*W*H)	760*480*570 mm
Power supply	A.C. 100~240 V, 4.0 A, 50/60 Hz
Weight	59 Kg

Ordering Information

Cat. #	Description	Qty.
NAES-96	M96 Nucleic Acid Extraction System	1 Set/Carton

DC48 Automated Sample Preparation System

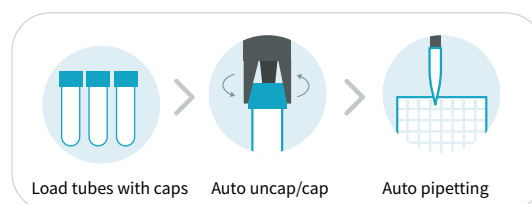
DC48 loads samples directly from collection tubes with automatic uncapping, sample addition, capping, barcode scanning, and PCR system establishment. This excellent solution for automation of nucleic acid sample preparation realizes auto monitoring of all process.

Compatibility

- Automatically pipette liquids, and upload information by scanned barcode.
- Adapt multiple collection tubes of 1, 3, 5, and 10 mL.
- Support dispensing in deep well plates used for 16 or 96 tests.
- Match common nucleic acid extraction systems of 32, 48, and 96 channels.

Safety

- Program controls the risk of error and omission. Full process monitoring prevent deviance.
 - Directional exhaust and HEPA filter create negative pressure, so external biological safety cabinet needed. Drip tray prevents pollution from accident drip.
 - The built-in UV lights in the experimental and waste cabin disinfect regularly.
- Uncap one by one to prevent cross contamination.



Parameters

Model	DC48
Function	Auto uncap and cap, scan barcode, solution pipetting and dispensing
Throughput	1-48
CV Value	Below 15 μ L: CV \leq 3%, 15~50 μ L: CV \leq 1.5%, above 50 μ L: CV \leq 1%
Pipetting Volume	5~1,000 μ L
Pipetting Channel	1 Channel
Pipetting System	Liquid level detection and following by air pressure, alarm when detect invalid aspiration and clogged needle The liquid surface follows the function
Collection Tubes	Adapt multiple size of 1, 3, 5, and 10 mL, support common vacuum blood collection tubes
Anti-Pollution	Directional exhaust and HEPA filter, built-in UV lamp, drip tray
Pipette Tips	2*96 pcs 1000ul tips or 96 pcs 1000ul + 96pcs 50ul tips
PCR Tubes	12 pcs PCR 8-strip tube, compatible with 0.1 and 0.2 ml, or 1 pc PCR 96-strip tube plate
Abnormal Alarm	Alarm reminds insufficient of reagents and consumables, supports addition midway
Program Setting	Free edition and large memory to store a variety of programs
Interface & Software	10.1" touch screen, Win10 in Chinese and English, monitor all the processes of pipetting and dispensing
Power Supply	A.C. 100~240 V, 50/60 Hz, 300 VA
Dimensions (L*W*H)	540*740*670 mm
Weight	80 Kg

Ordering Information

Cat. #	Description	Qty.
NAES-DC48	DC48 Automated Sample Preparation System	1 Set/Carton

BP96A Automated Liquid Handling Workstation

BP96A Automated Workstation precisely pipettes 96 samples at a time. The workstation is a small size, multifunctional, and easy to use equipment to fit laboratory benches, fume hoods, and biological safety cabinets.

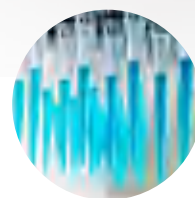
Features

Efficiency: 96 channels pipette all samples in a 96-well plate at time, which is 12 times faster traditional manual pipetting.

Convenience: multiple options of pipette tips to meet various experimental needs.

Accuracy: double sealing design ensures the accuracy of pipetting.

Automated: multiple saved programs allow true walk-away automation of purification protocols.



Parameters

Workstations	Automated	Manual
Model	BP96A	BP96M
Throughput	96	
Volume Increment	0.01 μ L	
CV	1.0%	
Pipetting Type	Air cushion system	
Position	5 Plates (customized 3~6 plates)	4 Plates
Optional Pipette Tips	0.5~20 μ L, 5~200 μ L, 10~300 μ L	0.5~20 μ L, 5~200 μ L
Movement Accuracy	± 0.01 mm	/
Touch screen	Yes	/
Software	Software: ZWorks, Api interface	/
Software Interface	USB, RS-232 Serial Communications	/
Power Supply	A.C. 100~240 V, 50/60Hz	/
Working Environment	Ambient temperature: 5~40 °C Relative humidity: 10~90%, non-condensing	
Dimensions (L*W*H)	5 Plates: 750*250*460 mm	320*450*390 mm

Ordering Information

Cat. #	Description	Qty.
BP96A-E	Automated Liquid Handling Workstations	1 Set/Carton
BP96M-E	Manual Liquid Handling Workstations	1 Set/Carton

DC10 Automated Screw Cap Capper/Decapper

Adapted to the most VTM. Capping or decapping triggered by infrared sensor. Complete capping and decapping of 96 samples in 10 minutes including manual dispensing.

Features

Compatibility: compatible with multiple specifications of tubes.

Intelligent: determine the position of the sampling tube in real time by infrared sensor. Automatically record the number of operations. The opening speed is adjustable.

Efficiency: one-hand operation, Complete capping or decapping within 3s .

Portable: 2 units can be placed in 1 biological safety cabinet.

Multimode: 3 optional modes: cap & uncap, cap only, and uncap only.



Parameters

Model	DC10H	DC50H
Compatible Tubes	5 mL and 10 mL tubes	50 mL tubes
Cap/Uncap Quantity	1 tube each time	1 tube each time
Opening Speed	3 s/tube	3 s/tube
Cap Diameters	16~22 mm	30~35mm
Control Method	Infrared induction	Infrared induction
Humidity	20~80%	20~80%
Temperature	10~40 °C	10~40 °C
Programs	Built-in programs	Built-in programs
Power Supply	A.C. 110~240 V, 50/60 Hz	A.C. 110~240 V, 50/60 Hz
Dimensions (L*W*H)	180*220*500 mm	180*220*500 mm
Weight	5.5 Kg	5.5 Kg

Ordering Information

Cat. #	Description	Qty.
BM-DC10H-E	DC10H Automated Screw Cap Capper/Decapper	1 Set/Carton
BM-DC50H-E	DC50H Automated Screw Cap Capper/Decapper	1 Set/Carton

DY-02 Blood Spot Dryer

The dryer dries the DBS cards quickly by low-power circulating air without deformation. The drying time is shortened and the risk of pollution is controlled.

Features

Portability: small size, lightweight, handle design.

Anti - Interference: avoid cross-contamination caused by stack cards, prevent external interference of mosquitoes, dust, etc.

Originality: the first independent closed dry space design, low-power circulating air dries samples fast.

Efficiency: dry multiple samples at once in a short period of time, drying time reduced from 4 hours to 40 minutes.



Parameters

Drying Time	30~40 min (humidity 70%)
Max. Capacity	10 cards
Timing Range	0 ~ 99 h 99 min
DBS Specifications	< 75 * 130 mm
Max. Relative Humidity	80% (no condensation)
Ambient Temperature	5 ~ 35 °C
Power Supply	A.C. 220 V, 50 Hz
Air Volume	27.55 CFM
Power	20 W
Dimensions (L*W*H)	370*280*243 mm
Weight	20 Kg

Ordering Information

Cat. #	Description	Qty.
DY-02-E	Blood Spot Dryer	1 Set/Carton
XSB003E	Neonatal Screening Card	100 Pcs/Box

BCM2500 Multifunctional Vortex Mixer

Deal with up to 50 samples at a time. Various adaptors fit the needs of vortex of different tube specifications.

Features

Efficiency: 2500 rpm to release samples sufficiently.

Multimode: optional intermittent pulse blending mode is suitable for various samples.

Optimization: optimized for biological sample extraction and mixing to ensure vortex effect.

Convenience: adapt special tube holders for easy observation.

Timing: timing settings available, no special manual guarding needed.

Stability: top and bottom double fixation to ensure long time mixing without shifting.

Compatibility: suitable for various specifications of centrifuge tubes, 96 and 384 well plates.



Foam Tube Holder 50 mL



Foam Tube Holder 15 mL

Parameters

Model	BCM2500
Speed Range	500~2500 rpm
Speed Accuracy	±1 rpm
Orbit	3.6 mm
Timing	0 s~99 h 59 min
Interval Range	1~99 s
Interval Operation Timing Range	1~999 s
Maximum Load	4.5 Kg
Power Supply	A.C 100~230 V, 50/60 Hz
Power	75 W
Dimensions (L*W*H)	426*246*474 mm

Ordering Information

Cat. #	Description	Qty.
BCM2500-E	Multifunctional Vortex Mixer	1 Set/Carton
BCM-2500-PM15	Foam tube holder 15 mL	1 Pc/Box
BCM-2500-PM50	Foam tube holder 50 mL	1 Pc/Box
BCM-2500-SD/XD	Top and bottom foam tray (standard accessory)	1 Pc/Box

SDC-3000 Multi-Tube Vortex Mixer

Biocomma Multi-Tube Vortex Mixer is a sample pretreatment device specially designed for liquid-liquid and solid-liquid mixing in the laboratory. The strong vortex effect is also suitable for high viscosity samples.



Applications

Multi-Tube Vortex Mixer is suitable for different volume tubes and multi tube vortex, which mainly apply to the pretreatment of detections such as pesticide residues, veterinary drug residues, additives, mycotoxins, and environment.

Features

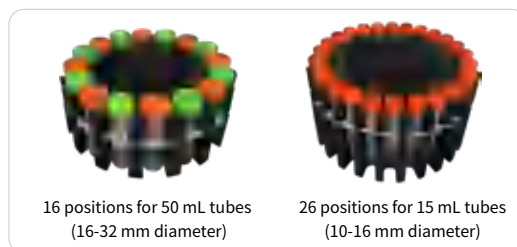
Convenience: fixed by elastic band, easy to place tubes and observe vortex effect.

Heigh Speed: rotating speed is up to 2800 rpm to mix well samples.

Intelligence: save up to 4 programs with preset vortex time and speed.

Use Friendly: press button design ensures effective operation by even wearing cotton work gloves or wet hands.

Compatibility: 3 options of carousel attachments to fit various tubes.



Parameters

Model	SDC-3000
Speed Range	0~2,800 rpm
Timing	1~1,999 min
Memory	4 saved programs with preset vortex time and speed, and one-button start
Carousel Accessories	Standard: 20 positions of 10 positions for 15ml tubes (10-16 mm diameter) plus 10 positions for 50ml (16-32 mm diameter)
	Optional: 26 positions for 15ml tubes (10-16 mm diameter)
	Optional: 16 positions for 50ml tubes (16-32 mm diameter)
	Customizable
Ingress Protection	IP20
Maximum Load	2.1 Kg
Settings	Set and continuously adjust on the digital display
Orbit	3 mm
Accessories	Multi tube holders, elastic band
Electrical Safety	Overload power outage
Working Environment	5~35 °C , relative humidity 80%
End Alarm	Yes
Safety Leakage Port	Yes
Electrical Requirements	A.C 110~220 V, 50/60 Hz
Power	60 W
Dimensions (L*W*H)	320*474*208 mm
Weight	18.8 Kg

Ordering Information

Cat. #	Description	Qty.
SDC-3000-E	Multi-Tube Vortex Mixer with standard carousel accessories: 20 positions of 10 positions for 15mL tubes (10-16 mm diameter) plus 10 positions for 50mL (16-32 mm diameter)	1 Set/Carton
SDC-3000-E-15	26 positions for 15 mL tubes (10-16 mm diameter)	1 Pc/Box
SDC-3000-E-A	16 positions for 50 mL tubes (16-32 mm diameter)	1 Pc/Box

BCN9602 96-Well Plate Nitrogen Evaporator

96-Well Plate Nitrogen Evaporator is a nitrogen concentration device that combines microcomputer processing and PID control. The working principle is to blow nitrogen rapidly, continuously and uniformly to the surface of sample. According to the evaporation speed and boiling point of the solvent, the heating temperature is set to complete rapid anaerobic concentration of large samples, which improves the recovery and reproducibility of the target analyte.

Applications

Sample preparation in clinical research and testing, drug screening, hormone analysis, liquid phase and mass spectrometry.

Features

Anti-pollution: independent gas needles avoid cross contamination.

Adjustable: standard gas needle is 80 mm and the height of needles holder is adjustable.

Flexible: each blowing channel can be used individually or in combination.

Convenience: each gas needle corresponds to the 96-well vertically which is easy to adjust.

Accuracy: temperature controlling is accurate, extensive, and convenient for calibration.

Safety: protective lifting system is secure to use.

Scale: lifting system with scale is positioned accurately.

Uniformity: excellent and uniform heat transfer.



Parameters

Model	BCN9602
Temperature Range	RT + 5~150 °C
Temperature Display Accuracy	±0.1 °C
Temperature Uniformity @100 °C	≤ ±0.5 °C
Temperature Uniformity @150 °C	≤ ±1 °C
Heating Time	≤ 30 min
Timing Range	1 min ~ 99 h 59 min
Max. Movement	275 mm
Max. Gas Pressure	0.1 Mpa
Max. Gas Flow	10 L/min
Air Inlet Outer Diameter	Φ7 mm
Needle Length	80 mm (suitable tube diameter <Φ10 mm)
Power	400 W
Power Supply	A.C. 110/220 V, 50/60 Hz
Weight	5.5 Kg
Dimensions (L*W*H)	220*260*445 mm

Ordering Information

Cat. #	Description	Qty.
BCN9602-E	96-Well Plate Nitrogen Evaporator (110 V)	1 Set/Box
BCN9602-E1	96-Well Plate Nitrogen Evaporator (220 V)	1 Set/Box
BCN02	Gas Control Valve	1 Pc/Box

BCN9603 96-Well Plate Intelligent Nitrogen Evaporator

96-Well Plate Smart Nitrogen Evaporator is specially designed for rapid anaerobic concentration for 96-well plates. The device can blow heated nitrogen to the surface of sample to evaporate the solvent faster and improve efficiency.

Applications

Sample preparation in clinical research and testing, drug screening, hormone analysis, liquid phase and mass spectrometry.

Features

Anti-pollution: independent gas needles are removable for convenient cleaning.

Adjustable: front lifting knob design is more user-friendly.

Convenience: touch screen is easy to operate.

Intelligence: editable Programs enable intelligent operations.

Accuracy: precise control of airflow and temperature.

Efficiency: nitrogen and bottom plate can be heated to improve blowing efficiency.



Parameters

Model	BCN9603
Temperature Range	RT ~ 30 °C
Max. Movement	35 mm
Max. Gas Pressure	0.6 Mpa
Max. Gas Flow	25 L/min
Air Inlet Outer Diameter	Φ8 mm
Needle Length	80 mm (suitable tube diameter <Φ10 mm)
Power	600 W
Power Supply	A.C. 220 V, 50/60 Hz
Weight	6.5 Kg
Dimensions (L*W*H)	259*310*365 mm

Ordering Information

Cat. #	Description	Qty.
BCN9603-E	96-Well Plate Intelligent Nitrogen Evaporator (110V)	1 Set/Carton
BCN9603-E1	96-Well Plate Intelligent Nitrogen Evaporator (220V)	1 Set/Carton

NFW80 High-Throughput Automated Nitrogen Evaporator

NFW 80 High-throughput Automatic Nitrogen Evaporator is a concentrating device that combines water bath and nitrogen blowing. The airflow split control is suitable for fast pretreatment of large batches of samples. The evaporator has become a standard equipment in many industries.

Features

High Throughput: up to 80 positions of 20 ml tubes can be concentrated simultaneously, compatible with various tubes.

Automated: set gas needles' moving speed by software during concentration. The needles automatically track the liquid level to ensure the best distance for concentration. Software controls the nitrogen flow by electrical regulating valves.

Modularity: install up to 6 groups of nitrogen blowing needles, and control each group individually.

Intelligent: one-click to add and drain water, and the equipped liquid level sensor in water bath automatically determine the end point.

Visibility: check the concentration status through glass window on 3 sides.



Parameters

Model	NFW80
Methodology	Concentrate by water bath and nitrogen blowing simultaneously
Sample Positions	1~80
Sample Volume	10~100 mL
Sample Tube	Compatible with various tube specifications, multiple choice of sample racks
Ambient Temperature	10~40 °C
Ambient Humidity	20 ~ 80%
Gas Needle Movable Distance	≤ 160 mm
Gas Needle Track Mode	Automatically move down to track liquid level at a constant speed, and software controls the moving speed
Gas Flow	Range: 0.0~4.0 L/min, accuracy of 0.1 L/min
Gas Needle Channels	≥ 6 groups
Water Bath	Equipped liquid level sensor and automatic water supply and drainage function
Gas Needle Controlling Accuracy	0.1 mm
Security	Alarm of water level over-limit, pressure over-limit, etc., and automatically cut off the airflow
Dimensions (L*W*H)	550*400*580 mm
Power Supply	A.C. 200~240V, 50/60 Hz

Ordering Information

Cat. #	Description	Qty.
NFW 80-E	High-Throughput Automated Nitrogen Evaporator	1 Set/Carton
NFW80-4801	48 positions sample rack (15 ml centrifuge tubes, 14-16 mm)	1 Pc/Box
NFW80-4802	48 positions sample rack (28-30 mm tubes)	1 Pc/Box
NFW80-8001	80 positions sample rack (≤ 20 ml tubes)	1 Pc/Box
NFW80-06	Needle rack (6 positions)	1 Pc/Box
NFW80-10	Needle rack (10 positions)	1 Pc/Box

SPEMF Solid Phase Extraction Vacuum Manifold

Solid Phase Extraction Vacuum Manifold processes multiple samples at the same time to realize activating, loading, rinsing, eluting and other processes in SPE sample pretreatment by controlling the pressure.

Features

Accuracy: individual valves control the flow rate independently and accurately.

Convenience: the pressure gauge is installed on the upper side of sealing cover, which is easy to read.

Compatibility: the height of the test tube rack is adjustable to meet the needs of different capacities.

Reliability: the vacuum chamber is formed by a quartz glass mold with uniform wall thickness and other parts are made of PTFE material, which are resistant to strong acid and alkali.

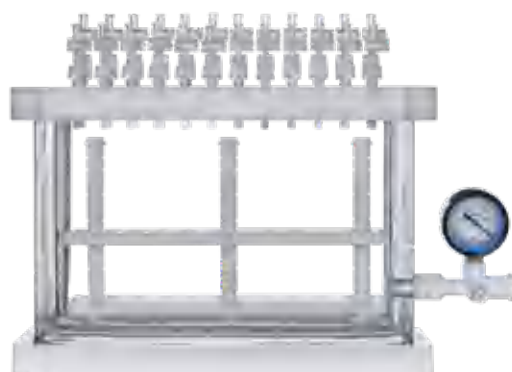
Anti-pollution: anti-cross-contamination and anti-atomization vacuum chamber design.

Efficiency: compatible with a large capacity collector to concentrate mass samples rapidly.

Stability: special designed flow channel enable the pressure more uniform and the flow rate more stable.



12-Port SPE Vacuum Manifold



24-Port SPE Vacuum Manifold

Parameters

Model	SPEMF12G	SPEMF24G-S
Ports	12	24
Lid	Polyoxymethylene	Polyoxymethylene
Glass Vacuum Chamber	Quartz	Quartz
Pressure Resistance	-80 Kpa	-80 Kpa
Stable Pressure	0~80 Kpa	0~80 Kpa
Test Tubes	≤ 105 mm, Φ10/Φ13/Φ15	≤ 105 mm, Φ10/Φ13/Φ15

Ordering Information

Cat. #	Description	Qty.
SPEMF12G-E	12-Port SPE Vacuum Manifold, square shape, individual flow valve, transparent glass	1 Set/Carton
SPEMF24G-S-E	24-Port SPE Vacuum Manifold, square shape, individual flow valve, transparent glass	1 Set/Carton

Vacuum Manifolds

The Vacuum Manifolds are specially designed for high-throughput nucleic acid purification, solid phase extraction, protein precipitation, Oligo synthesis and other applications. The manifolds are adapted to 48/96/384 well plates and Luer-inlet columns to eliminate repetition of pipetting and centrifugation in traditional nucleic acid extraction methods.

Features

Reliability: made of anti-corrosion and durable material.

Uniformity: the compact design ensures uniform flow rate during extraction at negative pressure.

Convenience: eliminate repeated operations of centrifugation and pipetting in traditional methods to improve efficiency.



Applications

Universal Vacuum Manifolds	Nucleic acid extraction, solid phase extraction, protein precipitation, QuEChERS, phospholipids removal, Oligo synthesis of deprotection, ammonolysis and other processes etc.
Double-Layer Vacuum Manifolds	Enable filtration and extraction at same time for nucleic acid extraction, solid phase extraction, protein precipitation, phospholipids removal, etc.
Micro-Filter Plate Vacuum Manifolds	Protein kinase and phosphatase assays, protein purification, receptor interaction assays, protein binding assays, ELISPOT assays, mass spectrometry, fluorescent dye removal

Ordering Information

Cat. #	Description	Qty.
009803-R-E	Universal Vacuum Manifolds (rose red)	1 Set/Carton
009803-B-E	Universal Vacuum Manifolds (sapphire blue)	1 Set/Carton
009804-R-E	Double-Layer Vacuum Manifolds (rose red)	1 Set/Carton
009804-B-E	Double-Layer Vacuum Manifolds (sapphire blue)	1 Set/Carton
009807-R-E	Micro-Filter Plate Vacuum Manifolds (rose red)	1 Set/Carton
009807-B-E	Micro-Filter Plate Vacuum Manifolds (sapphire blue)	1 Set/Carton

Vacuum Pump

biocomma® Vacuum Pumps are designed to work with vacuum manifolds. Utilizing diaphragm vacuum technology without oil to eliminate contamination of media that occurs in rotary vane pumps.

Parameters

Oil-Free Vacuum Pump	Portable	Adjustable
Model	SPEMFP01-E	SPEMFP02-E
Ultimate Pressure	0.08 MPa	0.02~0.08
Max. Flow	10 L/min	5~30 L/min
Power	55 W	90 W
Power Supply	A.C. 220 V, 50/60 Hz	A.C. 220 V, 50/60 Hz
Weight	3 Kg	3.8 Kg



Ordering Information

Cat. #	Description	Qty.
SPEMFP01-E	Portable Oil-Free Vacuum Pump, ultimate pressure 0.08 MPa	1 Set/Carton
SPEMFP02-E	Adjustable Oil-Free Vacuum Pump, adjustable pressure: 0.02~0.08, waste collection bottle included	1 Set/Carton

BCY96 Positive Pressure 96 Processor

BCY96 Positive Pressure 96 Processor uses a continuous positive pressure gas source to drive variable viscosity liquids through each well of 96-well plate. Applying parallel gas pressure from top of the device ensures highly uniform flow rate across 96 wells.

Features

Stability: flow rates are highly uniform between wells.
Pressure is constant in each well.

Efficiency: provide excellent flow rate for viscous samples. Universal design fits all SPE 96 well plates.

Reproducibility: improve the reproducibility of solid-phase supported liquid-liquid extraction (SLE), solid-phase extraction (SPE) and protein precipitation filtration (PPT).

Easy to Use: adjustable gas pressure is up to 100psi.



Parameters

Model	BCY9601	BCY9602
Throughput	1~96	1~96
96-Well Output Working Pressure	Low pressure area: 0~15 psi High pressure area: 0~95 psi	Low pressure area: 0~15 psi High pressure area: 0~100 psi
External Working Air Pressure	0.35~0.7 Mpa	0.35~0.7 Mpa
Flatness of Movable Platen	Height error $\leq \pm 0.1$ mm	Height error $\leq \pm 0.1$ mm
96-Well Gas Pressure Uniformity	$\leq \pm 10\%$	$\leq \pm 10\%$
Operating Humidity	10~90%	10~90%
Operating Temperature	10~40 °C	10~40 °C
Applicable Consumables	96-well extraction plate, 2 ml collection plate	96-well extraction plate, 1 ml collection plate, 2 ml collection plate
Operation Method	Switch knob control	Switch knob control
Power Mode	Pneumatic control, no external power supply required	Pneumatic control, no external power supply required
Dimensions (L*W*H)	260*300*360 mm	260*300*330 mm
Weight	8 Kg	8 Kg

Ordering Information

Cat. #	Description	Qty.
BCY9601-E	Positive Pressure 96 Processor	1 Set/Carton
BCY9602-E	Positive Pressure 96 Processor (includes adapters to fit more plates)	1 Set/Carton

BCS901 Heat Sealer

The heat sealer adapts various plates, and easy to operate. The sealing temperature and time are adjustable. Sealed films prevent sample evaporation, leakage and cross contamination.

Features

Fast: adjustable sealing temperature of 80~200 °C , real-time display, rapid heating up to reach 170°C in 300s, rapid cooling down by fan.

Suitability: adjustable sealing pressure to adapt various micro plates and sealing films.

Stable: temperature is controlled by microprocessor with good accuracy and good reproducibility.

Adjustable: temperature adjustment unit is 1°C , and the time adjustment unit is 0.1s.

Advanced: advanced ceramics platen heating technology avoiding adhesion of sealing films due to overheat.

Automated: switch to stand-by mode automatically after 60 minutes inactivity to save energy.



Universal Adaptor



PCR Adaptor

Parameters

Model	BCS9601
Sealing Temperature	80 ~ 200 °C (Minimum adjustable unit 1.0 °C)
Temperature Accuracy	±1 °C
Temperature Uniformity	±1 °C
Sealing Time	0.5 ~ 10 s (Minimum adjustable unit of 0.1s)
Compatible Plate Material	PP (polypropylene) / PS (polystyrene) / PE (polyethylene)
Compatible Plate Types	Various standard multi-well plates: PCR plates (full skirt, half skirt, and no skirt), deep well plates, Elisa plates, etc
Compatible Film Material	Foil-polypropylene, transparent polyester fiber-polypropylene, transparent polymer, transparent thin polymer, foil
Sealing Pressure Range	Level 1-5
Compatible Plate Height	9~48 mm, no adjustment needed
Front Panel Material	Fireproof ABS
Heat Sealing Platform Material	Ceramics
Power Supply	A.C. 220 V / 110 V, 50/60 Hz
Maximum Input Power	300 W
Dimension (L*W*H)	180*360*380 mm
Weight	12 Kg

Ordering Information

Cat. #	Description	Qty.
BCS9601-E	Heat Sealer	1 Set/Carton

TWM160 Cyclone Mill

TWM160 Cyclone Mill is a grinder specially designed for NIR near-infrared analysis of food and feed. Sample collides and rubs against the rotary knife and the screen ring by the airflow formed by the high-speed rotary knife, so that desired crushing effect achieved in a very short time.

Applications

Industries: agriculture, pharmaceuticals, food, feed, tobacco, etc.

Sample types: soft, medium-hard, brittle, fibrous, low-fat, etc.

Typical samples: granular tablets, grains, beans, corn, feed, tobacco, etc.

Features

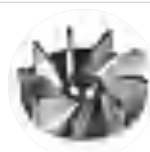
High Efficiency: powerful motor to ensure high efficiency grinding.

Convenience: the cyclone collects samples quickly.

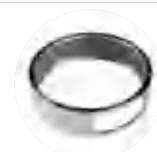
Protection: ensure the sample won't thermally degrade.

Anti-Pollution: no cross-contamination, and easy to clean.

Uniform: uniform particle size distribution for good reproducibility and reliability of results.



Impeller Cutter Head



Fixed Screen Ring

Parameters

Model	TWM160
Crushing Principle	Collision, cutting
Particle Size	< 15 mm
Grinding Particle Size	< 220 μ m
Batch Feeding Amount	< 250 mL
Motor Speed	12000 / 14000 / 17000 rpm Digital display
Circumferential Speed	82 m/s
Rotary Knife Diameter	100 mm
Power	1.1 KW
Power Supply	A.C. 220 V, 50 Hz

Ordering Information

Cat. #	Description	Qty.
TWM160- E	TWM160 Cyclone Mill	1 Set/Carton

TD100 Knife Mill

TD100 Knife Mill is special designed for crushing and homogenizing samples to analysis fineness in tens of seconds. The high homogenization degree of grinding meets various professional requirements of laboratory operation and analysis process.

Applications

Agriculture: pellets, shells, grains, etc.

Drugs: Chinese herbals, medicine, etc.

Biology: animal tissues, leaves, seeds, seedlings, etc.

Food: fruits, vegetables, frozen foods, candies, preserved fruits, meats, etc.

Features

Convenience: fast start up and easy to operate.

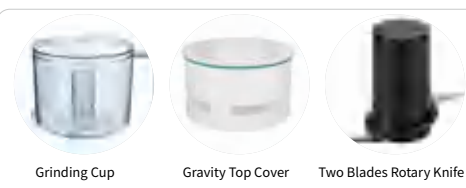
Large Capacity: up to 700 ml samples.

High Temperature Resistance: accessories can be sterilized under high temperature and pressure.

Compatibility: both coarse grinding and fine grinding.

Multiple Modes: intermittent mode, reverse mode, transient mode.

Controllability: powerful industrial motor with controllable speed.



Parameters

Model	TD100
Particle Size	≤ 45 mm
Grinding Particle Size	250 μm
Maximum Speed	14,000 r/min
Sample Capacity	150 ~ 700mL
Timing Range	0:01 ~ 9:59 (min:s)
Rotary Knife Material	Titanium, stainless steel
Blade Numbers	2
Power	1.1 KW
Power Supply	A.C 220 V, 50 Hz
Dimensions (L*W*H)	260*343*454 mm
Weight	16 Kg

Ordering information

Cat. #	Description	Qty.
TD100-E	Knife Mill	1 Set/Carton
TD100-01	PC Transparent Plastic Grinding Cup	1 Pc/Box
TD100-02	Stainless Steel Grinding Cup	1 Pc/Box
TD100-04	Gravity Top Cover	1 Pc/Box
TD100-05	Gravity Cover with Overflow Channel	1 Pc/Box
TD100-06	Titanium Rotary Knife	1 Pc/Box
TD100-07	Stainless Steel Rotary Knife	1 Pc/Box

WT-10 Thermostatic Water Bath

WT-10 Thermostatic Water Bath adopts advanced manufacturing process and microcontroller technology, which provides a high-precision, controllable, and constant field for samples. The device is widely used in medicine, biochemistry, light industry, scientific research and other fields.

Features

Anti-Corrosion: stainless steel sink is formed with punch press at one time, and the Teflon-treated surface is wear-resistant and corrosion-resistant.

Antirust: the shell is made of cold rolled steel with good performance, and the surface frosted plastic spray treatment to prevent rust.

Drainage: discharge sewage quickly through the thick drainage valve on the back.

Precision: PID controller has good temperature control linearity, high precision and small fluctuation.

Display: parameters are clearly displayed on the TFT large color screen.

Safety: photoelectric liquid level sensor alarms at low liquid level and cut off power while overheating.

Uniformity: pouring heating plate is perfectly fit the tank bottom to ensure good temperature uniformity.



Parameters

Model	WT-10
Controlling Temperature Range	RT + 5~100 °C
Timing Range	1 min ~ 99 h 59 min
Controlling Temperature Accuracy	±0.3 °C
Temperature Uniformity	±0.3 °C (37 °C)
Capacity	10 L
Power Supply	A.C. 100~120 V / 200~240V, 50~60 Hz
Power	1 KW
Dimension (L*W*H)	290*395*210 mm
Weight	4.8 kg

Ordering Information

Cat#.	Description	Qty.
WT-10-E	Thermostatic Water Bath	1 Set/Carton

TS-60 Incubator Shaker

TS-60 Incubator Shaker is a laboratory equipment widely applied to the experiment has strict requirements of temperature and oscillation frequency, such as cell culture, fermentation, hybridization, biochemistry, enzymes and cell tissues research. The Incubator shaker realizes the Static and dynamic cell culture.

Features

Design: compact space, low vibration noise, timing wide angle opening transparent cover, easy to observe and operate.

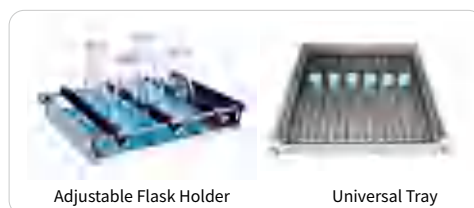
Accuracy: the temperature and oscillation frequency are controlled by microcontroller, good temperature uniformity.

Intelligent: when the cover is opened, air circulation is halved, the heating and oscillation are automatically stopped to avoid temperature overshoot.

Stability: the unique control speed circuit ensures the smooth start of the shaker and prevents damage on equipment from splash.

Protection: adjustable fan speed to avoid volatilization of the sample due to excessively fast wind speed.

Safety: independent temperature alarm system automatically stops heating when the temperature exceeds the limit to ensure safe operation.



Parameters

Model	TS-60-E	TS-60H-E
Speed	50~300 rpm	200~1200 rpm
Amplitude	20 mm (Circular rotation)	3 mm (Horizontal rotation)
Controlling Temperature Range	RT + 5~60 °C	RT + 5~60 °C
Setting Temperature Range	5~60 °C	5~60 °C
Temperature Stability	±0.3 °C	±0.3 °C
Temperature Accuracy	0.1 °C	0.1 °C
Timing Range	1 min ~ 99 h 59 min	1 min ~ 99 h 59 min
Power Supply	A.C 220 V / 110 V, 50/60 Hz	A.C 220 V / 110 V, 50/60 Hz
Power	400 W	400 W
Fuse	250 V, 2 A / 3 A, $\Phi 5 \times 20$	250 V, 2 A / 3 A, $\Phi 5 \times 20$
Dimensions (L*W*H)	360*435*320 mm	360*435*320 mm
Weight	18.7 Kg	18.7 Kg
Trays	Universal Tray PW-260	Tray PW-1500

Ordering Information

Cat. #	Description	Qty.
TS-60-E	TS-60 Incubator Shaker (Circular rotation)	1 Set/Carton
TS-60H-E	TS-60 Incubator Shaker (Horizontal rotation)	1 Set/Carton

MTB-100 Dry Block Incubator

The incubator is a constant temperature mixing product with fast mixing speed. The 3 functions of mixing, oscillation and incubation heating (MTB-100C has cooling function) are adapt to heat, incubate and catalyze samples in various consumables such as micro-tubes, PCR plates, deep well plates and micro-filter plates.

Features

Efficiency: high efficiency mixing and temperature control, 5 optional preset programs.

Safety: multiple safety protection, CE standards, reliable.

Diversity: multiple choices of sample modules, easy to replace.

Accuracy: temperature calibration and short inching vortex functions.

Timing: range of 1 min to 99 h 59 min, or continuously running.

Memory: keep running set program after power outage, beep after finished.



Parameters

Model	MTB-100-E	MTB-100C-E
Rotation Speed	300~2000 rpm	300~1500 rpm
Amplitude	3 mm (Horizontal rotation)	3 mm (Horizontal rotation)
Controlling Temperature Range	RT + 5~100 °C	0~100 °C
Maximum Cooling Range	/	RT - 20 °C
Setting Temperature Range	5~100 °C	0~100 °C
Module Temperature Stability	±0.3 °C	±0.3 °C
Module Temperature Uniformity	±0.3 °C	±0.3 °C
Temperature Display Accuracy	0.1 °C	0.1 °C
Heating Time	≤ 15 min (20 ~ 100 °C)	≤ 15 min (20 °C to 100 °C)
Cooling Time	/	≤ 15min (Room temperature - 20 °C) Ambient temperature 26 °C ≥ 7 °C /min (Room temperature - 20 °C) ≥ 1.2 °C /min (Room temperature - 10 °C)
Cooling Rate	/	
Timing Range	1 min ~ 99 h 59 min	1 min ~ 99 h 59 min, inching
Power Supply	A.C. 110/220 V, 50/60 Hz	A.C 110/220 V, 50/60 Hz
Power	200 W	200 W
Fuse	250 V, 2 A / 3 A, Φ5×20	250 V, 3 A, Φ5×20
Dimensions (L*W*H)	196*270*170 mm	196*270*170 mm
Weight	8.2 Kg	8.8 Kg

Ordering Information

Cat. #	Description	Qty.
MTB-100-E	Dry Block Incubator	1 Set/Carton
MTB-100C-E	Dry Block Incubator (with cooling function)	1 Set/Carton

CF14 High Speed Refrigerated Centrifuge

High speed refrigerated centrifuges are widely applied to clinical medicine, biochemistry, genetic engineering, immunology and other fields, which is commonly used for centrifugal separation in hospitals, scientific research institutions and colleges. Samples can be centrifuged at high speed and low temperature. Multiple purposes are achieved by various rotors.

Features

Safety: optional sealed rotor, all-metal sealing structure, anti-aerosol pollution design.

Silence: adopt low-noise maintenance-free waterproof brushless motor.

Obvious: high-brightness large-screen LCD displays multi-parameter.

Multifunctional: two control modes of rotation speed and relative centrifuge force, automatic calculation and display of relative centrifugal force.

Stability: double safety protection case and automatic cover to ensure the quality of samples before and after centrifugation.



4*2*8*0.2mL



12*1.5/2mL

Rotor Parameters

CF14	Capacity	Speed (r/min)	RCF (g)
Angle Rotor	16*2 mL (standard)	14000	15500
	12*1.5/2mL	14000	15000
	4*2*8*0.2 mL	14000	16435

Parameters

Model	CF14
Rotation Speed	500~14000 rpm
Max. RCF	15000 g
Max. Capacity	16*2 mL
Temperature Range	-10 °C ~ 30 °C
Noise	≤ 62 dB
Timing Range	15 sec to 99 min / long term
Power Supply	A.C. 240 V, 50/60 Hz
Power	600 W
Weight (Rotor Included)	25 Kg
Dimensions (L*W*H)	540*270*250 mm

Ordering Information

Cat. #	Description	Qty.
BM-CF14-E	CF14 High Speed Refrigerated Centrifuge	1 Set/Carton
BM-CF14-1	12*1.5/2mL Angle rotor	1 Pc/Box
BM-CF14-3	4*2*8*0.2 mL Angle rotor	1 Pc/Box

H16GM High Speed Centrifuge

High-speed centrifuges are widely applied to clinical medicine, biochemistry, genetic engineering, immunology and other fields, which is commonly used for centrifugal separation in hospitals, scientific research institutions and colleges. Mass samples can be centrifuged at high speed. Multiple purposes are achieved by 13 adapted rotors.

Features

Stability: microcomputer control, brushless DC motor, stable operation and low noise.

Convenience: dual operation modes of touch screen and physical buttons, programmable operation, set host operating parameters and auto save.

Efficiency: the special combination of shock absorption device lets the motor run smoothly, and prevents the sample from being resuspended to achieve excellent centrifugal effect.

Safety: alarm functions of overspeed, overtemperature, unbalance, undervoltage, overvoltage, etc.

Customization: 10-speed acceleration and deceleration rate control, save up to 20 sets of defined programs.

Intelligent: trigger the adopted silent electromechanical integrated motor door to lock by gently capping.



Rotor Parameters

H16GM	Capacity	Speed (r/min)	RCF (g)
Angle Roto	12*1.5 / 2.0 ML (Standard)	16500	18780
	18*1.5 / 2.0 mL	15000	18111
	24*1.5 / 2.0 mL	14000	18220
	10*5 mL	13500	12570
	12*10 mL / 5 mL	12000	13820
	8*15 mL V-Bottom	12000	14830
	8*15 mL U-Bottom	12000	14830
	6*50 mL V-Bottom	11000	12700
	6*50 mL U-Bottom	11000	11610
Dimensions (L*W*H)	6*50 mL Universal	6000	3670
Horizontal Rotor	12*10 mL	4000	2360
	4*100 mL	4000	2490
ELISA Plate Rotor	2*2*48 Well	3000	1120

Parameters

Max. Rotation Speed	16500 rpm
Max. RCF	18780 g
Max. Capacity	4*100 mL
Timing Range	1~99 h 59 min
Running Programs	20
Power	500 W
Noise	≤ 60 dB
Power Supply	A.C. 220 V, 50 Hz
Weight	35 Kg
Dimensions (L*W*H)	550*440*330 mm

Ordering Information

Cat. #	Description	Qty.
H16GM-E	High Speed Centrifuge, 16500 rpm	1 Set/Carton
H16FM-E	High Speed Refrigerated Centrifuge, 16000 rpm	1 Set/Carton
DTZ5-E	Low Speed Auto-Balancing Centrifuge, 5000 rpm	1 Set/Carton

UGF Noiseless Ultrasonic Cleaner

UGF Noiseless Series is famous by its unique multiple sound reduction design which provides a quiet and comfortable environment in the laboratory. Multiple options are available to meet general laboratory requirements of routine cleaning, extraction, emulsification, mixing, degassing and dispersion, etc.

Features

Anti-Corrosion: inner sink is made of SUS304 stainless steel and formed with punch press at one time without welding marks to ensure good performance of waterproof, acid and alkali resistance.

Powerful: the transmission power of ultrasonic transducer is 50/60 W. The ultrasonic is powerful and the conversion is highly efficient. The unique cooling system ensures the smooth operating of each component.

Convenience: user-friendly customized drainage discharges sewage quickly. Timing and temperature settings are flexible. Set personalized programs.

Automation: realized easy control of time, temperature and power by three unique designed dials. Running parameters are displayed on LCD screen.

Appearance: The panel is made of plexiglass, and the device appearance is delicate.



LED Screen



Smart Chip



Laser Cutting



Exquisite Details

Parameters

Specification	UC-10-E
Capacity	10 L
Ultrasound Input Power	300 W
Ultrasound Frequency	40 Hz
Heating Power	300 W
Temperature Range	RT~80 °C
Time Setting Range	1~999 min / Normally open
Inner Sink Dimensions (L*W*H)	300*240*150 mm
Dimensions (L*W*H)	328*266*292 mm
Power Supply	A.C. 110V

Ordering Information

Cat. #	Description	Qty.
UC-06-E	Noiseless Ultrasonic Cleaner, 6 L, power 150 W	1 Set/Carton
UC-10-E	Noiseless Ultrasonic Cleaner, 10 L, power 300 W	1 Set/Carton
UC-15-E	Noiseless Ultrasonic Cleaner, 15 L, power 400 W	1 Set/Carton

Manual Pipettes

Features

- Wide measuring range from 0.1µl to 10mL.
- EN/IOS08655 standard calibration, and online calibration is available.
- The lower half can be sterilized at high temperature and pressure.

Ordering Information

Cat. #	Channels	Range	Qty.
DL-2.5	1	0.1~2.5 µL	1 Pc/Box
DL-10	1	0.5~10 µL	1 Pc/Box
DL-20	1	2~20 µL	1 Pc/Box
DL-50	1	5~50 µL	1 Pc/Box
DL-100	1	10~100 µL	1 Pc/Box
DL-200	1	20~200 µL	1 Pc/Box
DL-1001	1	100~1000 µL	1 Pc/Box
DL-1002	1	200~1000 µL	1 Pc/Box
DL-5000	1	1000~5000 µL	1 Pc/Box
DL-10000	1	2~10 mL	1 Pc/Box
DL-10-8	8	0.5~10 µL	1 Pc/Box
DL-50-8	8	5~50 µL	1 Pc/Box
DL-50-12	12	5~50 µL	1 Pc/Box
DL-300-8	8	50~300 µL	1 Pc/Box
DL-300-12	12	50~300 µL	1 Pc/Box



Bottletop Dispensers

Features

- Wide capacity range of 0.5-100mL. Chemical resistance.
- Various accessories are available. Partial or whole sterilization at high temperature is available.
- Pro series designed with backflow valve.

Ordering Information

Cat. #	Range	Qty.
DLP-5	0.5~5 mL	1 Pc/Box
DLP-5-Pro	0.5~5 mL	1 Pc/Box
DLP-10	1~10 mL	1 Pc/Box
DLP-10-Pro	1~10 mL	1 Pc/Box
DLP-25	2.5~25 mL	1 Pc/Box
DLP-25-Pro	2.5~25 mL	1 Pc/Box
DLP-50	5~50 mL	1 Pc/Box
DLP-50-Pro	5~50 mL	1 Pc/Box
DLP-100-Pro	10~100 mL	1 Pc/Box



HZK Series Balance

Features

- Large LCD screen.
- External calibration or fully automated intelligent internal calibration.
- Seven levels of anti-vibration filter are adjustable.
- Connect to other devices through USB/RS232 port.



HZY Series Balance

Features

- High resolution color touch screen.
- Automatic dual range and dual precision function.
- Custom dual intelligent internal calibration.
- Seven levels of anti-vibration filter are adjustable.
- Connect to other devices through USB/RS232 port.



HZ Series Balance

Features

- Automatic dual range and dual precision function.
- Custom dual intelligent internal calibration.
- Seven levels of anti-vibration filter are adjustable.
- Connect to other devices through USB/RS232 port.



Ordering Information

Cat. #	Readability (mg)	Weighing Capacity (g)
HZY-35/104	0.01/0.1	30/100
HZ-124/105S	0.01/0.1	100/120
HZY-124	0.1/1	120/220
HZK-FA210S	0.1	210
HZY-223/323	1/2	220/320
HZK-JA210S	1	210
HZK-JA510	1	510
HZY-1202/2202	10/20	1200/2200



Contact us for more details



Provide Innovative Solutions for Sample Preparation

Biocomma Limited