

## SRI Medical Cannabis Potency Testing GC-TID configuration



### Includes:

Thermionic Ionization Detector ( TID )

On-column injector

400°C column oven

15 meter capillary column

PeakSimple Data System

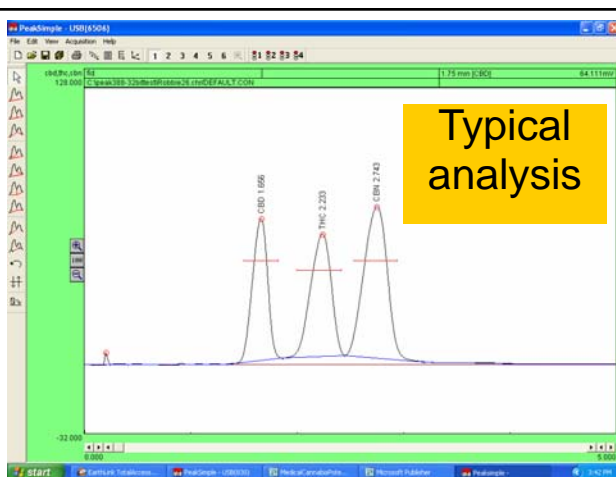
Built-in air compressor and dryer

10 and 100ul syringes  
Starter pack of vials and spare parts

Complete system

Ships easily by FedEx/UPS  
Small footprint for crowded lab bench tops  
Friendly, easy to reach Tech support  
Free training  
Two Year Warranty  
Made in USA

The perfect size GC for lab and field, the SRI Model 8610C GC configured for medical cannabis potency testing allows even inexperienced users to quickly ( 5 minutes ) test for THC, CBD and CBN content in plant, oil or edible matrixes. The Thermionic Ionization Detector ( TID ) requires only dry air to operate, and the GC is equipped with a built-in air compressor and gas stream dryer so only electric power and a Windows computer with USB port is required for operation. SRI can upgrade this GC for cannabis pesticide screening so both pesticide residues and potency can be tested on the same GC platform. Alternate detectors such as FID ( Flame Ionization Detector ) may be substituted on request.



8610-0090

Complete GC system

US\$ 11,749.00

[www.srigc.com](http://www.srigc.com) Prices in USD add Freight and GST - in Australia Availability ? - Enquire !



**CHROMALYTIC**  
ECHnology Pty Ltd  
+61(0)3 9762 2034  
Website NEW : [www.chromalytic.com.au](http://www.chromalytic.com.au) E-mail : [info@chromtech.net.au](mailto:info@chromtech.net.au)

Australian Distributors  
Importers & Manufacturers  
[www.chromtech.net.au](http://www.chromtech.net.au)

Tel: 03 9762 2034 . . . in AUSTRALIA